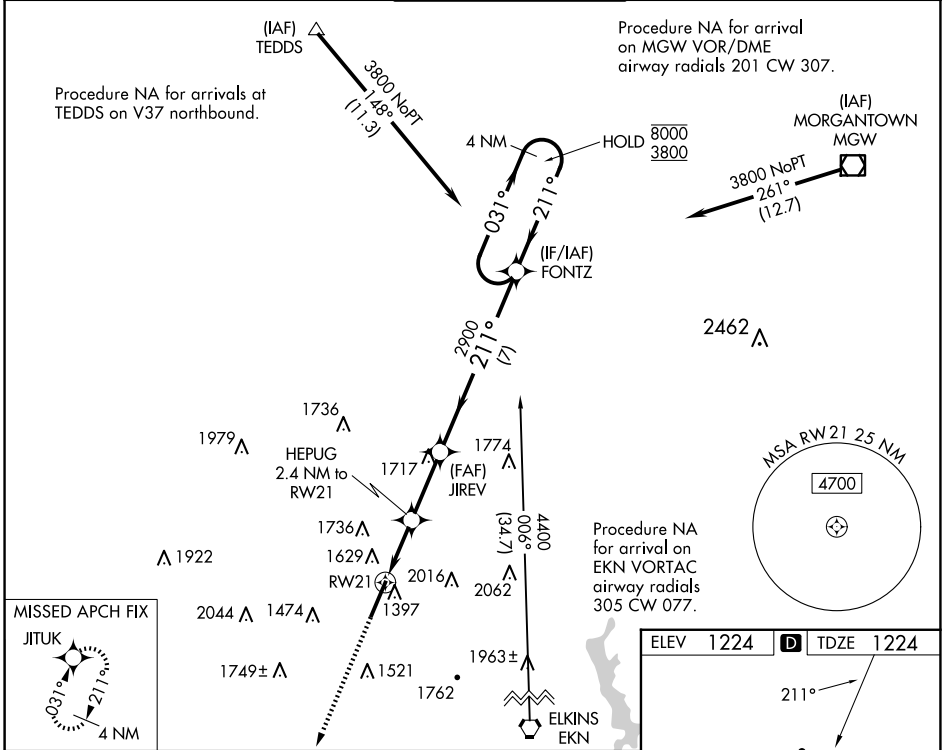


WAAS CH <b>82504</b> <b>W21A</b>	APP CRS <b>211°</b>	Rwy Idg TDZE Apt Elev	<b>7130</b> <b>1224</b> <b>1224</b>
--	------------------------	-----------------------------	---

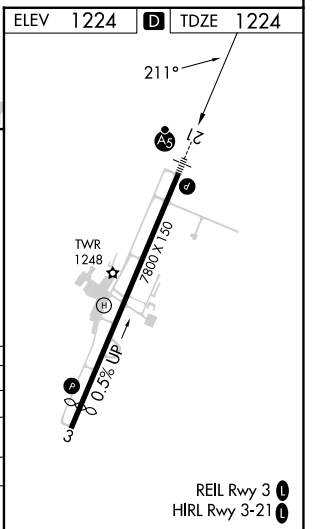
# RNAV (GPS) RWY 21

NORTH CENTRAL WEST VIRGINIA (CKB)

RNP APCH.		MALSR		MISSED APPROACH: Climb to 3900 direct JITUK and hold.	
<p>▼ For uncompensated Baro-VNAV systems, LNAV/VNAV NA below -16°C or above 54°C. For inop ALS, increase LNAV Cats C and D visibility to 1½ SM.</p>					
ATIS <b>127.825</b>	CLARKSBURG APP CON ★ <b>121.15 284.65</b>	CLARKSBURG TOWER ★ <b>126.7 (CTAF) 257.925</b>	GND CON <b>121.9</b>	UNICOM <b>123.0</b>	



3900	JITUK	JIREV	FONTZ	4 NM Holding Pattern
↑		HEPUG 2.4 NM to RW21	2900	031° → 8000 ← 211° 3800
*LNAV only.				
<p>RW21: *1.6 NM to RW21, *2020, 2900, GP 3.00° TCH 60</p>				
<p>1.6 NM 0.8 NM 2.7 NM 7 NM</p>				
CATEGORY	A	B	C	D
LPV DA	1424/24		200 (200-½)	
LNAV/VNAV DA	1786-1¾		562 (600-1¾)	
LNAV MDA	1800/24	576 (600-½)	1800-1¼	576 (600-1¼)
CIRCLING	1940-1 716 (800-1)	2040-1¼ 816 (900-1¼)	2320-3	1096 (1100-3)



NE-4, 15 MAY 2025 to 12 JUN 2025

NE-4, 15 MAY 2025 to 12 JUN 2025