

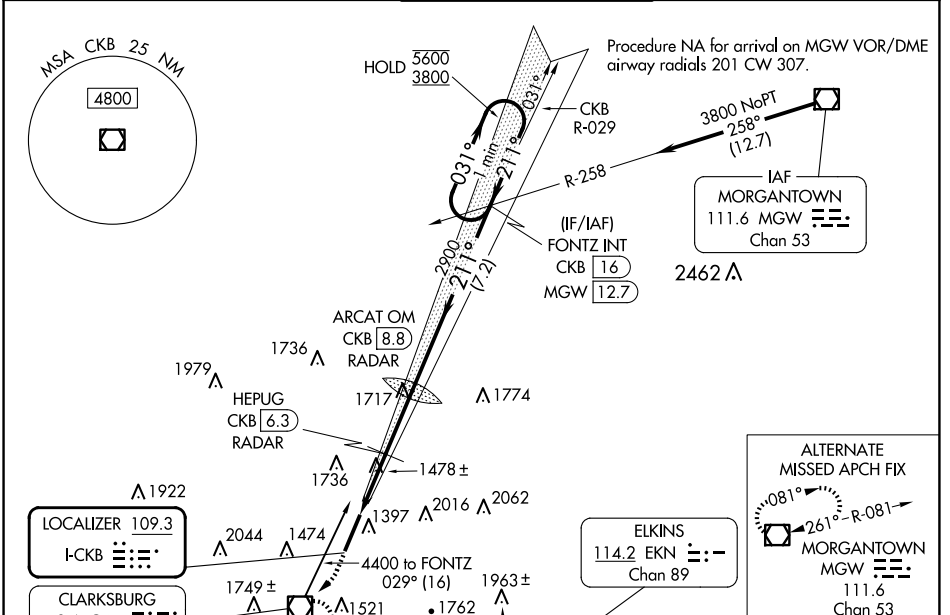
LOC I-CKB	APP CRS	Rwy Ldg	7130
109.3	211°	TDZE	1224
		Apt Elev	1224

ILS or LOC RWY 21

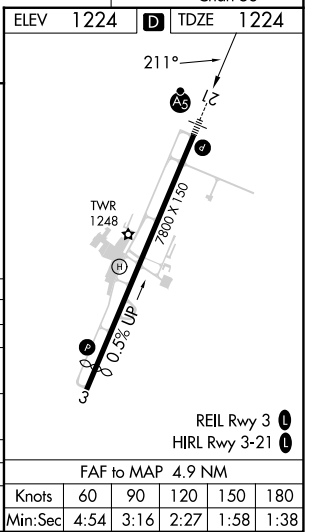
NORTH CENTRAL WEST VIRGINIA (CKB)

<p>For inop ALS, increase S-LOC 21 Cat C/D visibility to 2½ SM, and HEPUG fix minimums Cat C/D visibility to 1½ SM. DME from CKB VOR/DME. Autopilot coupled approach NA below 2000.</p>	<p>MALSR</p>	<p>MISSED APPROACH: Climb to 1800 then climbing right turn to 3200 direct CKB VOR/DME and hold, continue climb-in-hold to 3200.</p>

ATIS	CLARKSBURG APP CON *	CLARKSBURG TOWER *	GND CON	UNICOM
127.825	121.15 284.65	126.7 (CTAF) 0 257.925	121.9	123.0



ELEV 1224	TDZE 1224
1800	3200
*LOC only.	*CKB
1.4 NM	1 NM
2.5 NM	7.2 NM
A	B
S-ILS 21	1424/24
S-LOC 21	2020/24 796 (800-½)
CIRCLING	2020-1 796 (800-1)
HEPUG FIX MINIMUMS (DME or RADAR REQUIRED)	
S-LOC 21	1740/24 516 (600-½)
CIRCLING	1940-1 716 (800-1)



NE-4, 15 MAY 2025 to 12 JUN 2025

NE-4, 15 MAY 2025 to 12 JUN 2025