

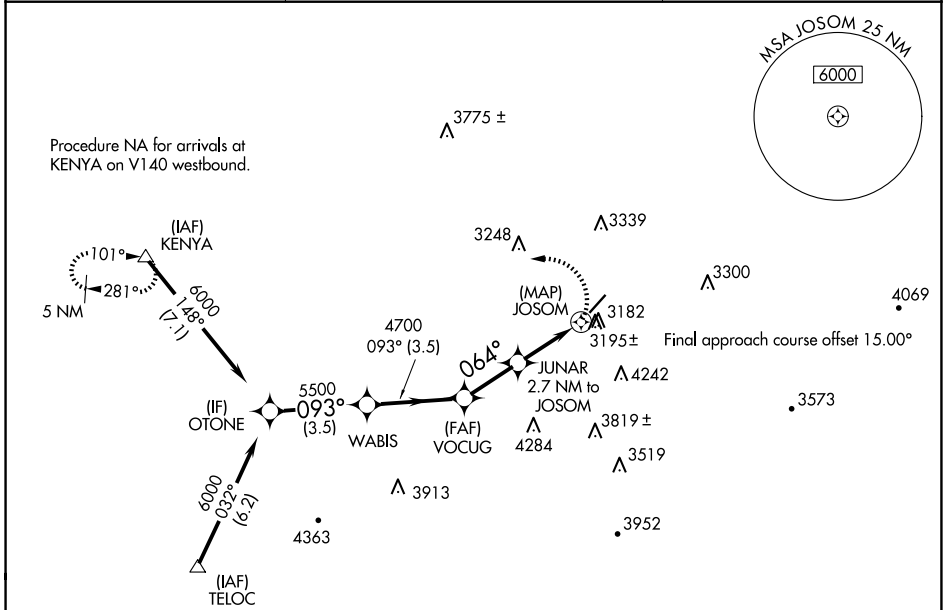
APP CRS <b>064°</b>	Rwy Idg <b>4743</b>
	TDZE <b>2850</b>
	Apt Elev <b>2857</b>

# RNAV (GPS) RWY 5

MERCER COUNTY (BLF)

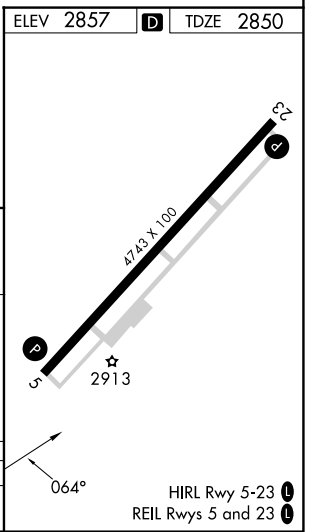
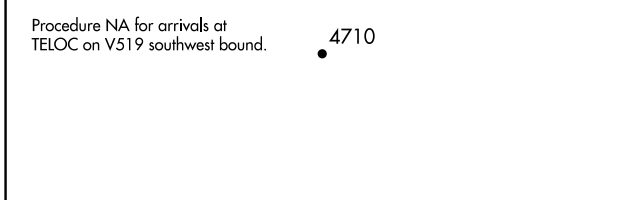
RNP APCH.	MISSED APPROACH: Climbing left turn to 6000 direct KENYA and hold.
<p>Procedure NA at night. Rwy 5 helicopter visibility reduction below 1 SM NA.</p>	

ASOS <b>132.725</b>	INDIANAPOLIS CENTER <b>126.575 257.85</b>	CTAF <b>122.9</b>
------------------------	--	----------------------



NE-4, 15 MAY 2025 to 12 JUN 2025

NE-4, 15 MAY 2025 to 12 JUN 2025



OTONE	WABIS		VOCUG	JUNAR 2.7 NM to JOSOM	JOSOM
6000	5500	4700	3940		
3.5 NM		3.5 NM		2.3 NM	2.7 NM
CATEGORY	A	B	C	D	
LNAV MDA	3560-1	710 (800-1)	3560-2	3560-2 1/4	710 (800-2 1/4)