

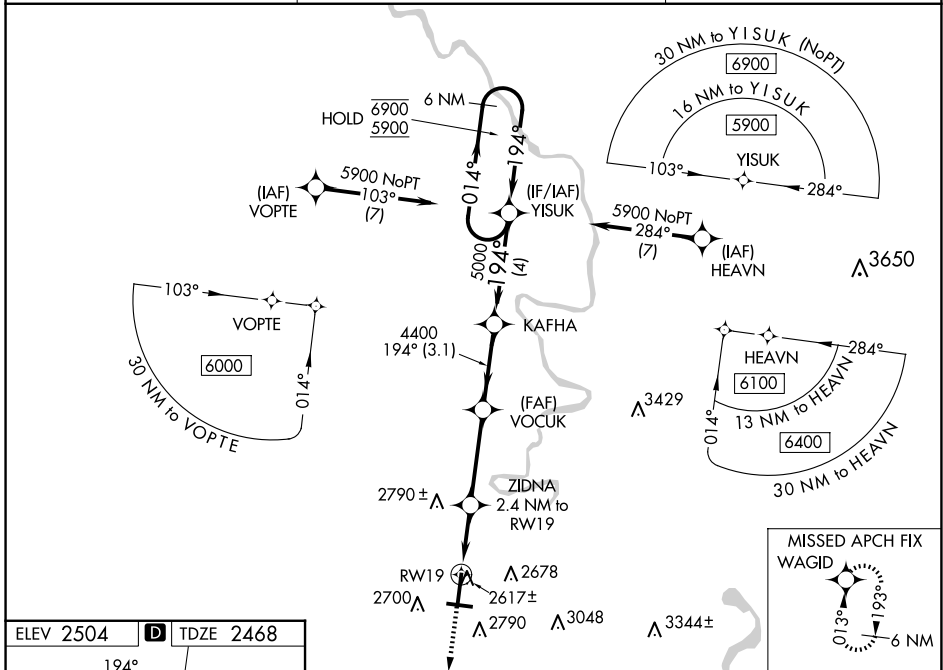
WAAS CH 63011 W19A	APP CRS 194°	Rwy Idg TDZE 6750 2468 Apt Elev 2504
--	------------------------	--

RNAV (GPS) RWY 19

RALEIGH COUNTY MEML (BKW)

RNP APCH - GPS.	MALSR 	MISSED APPROACH: Climb to 5900 direct WAGID and hold, continue climb-in-hold to 5900.
Baro-VNAV NA. For inop ALS, increase LNAV/VNAV all Cats visibilities to 1 SM, LNAV visibilities Cats C/D to 1 3/8 SM.		

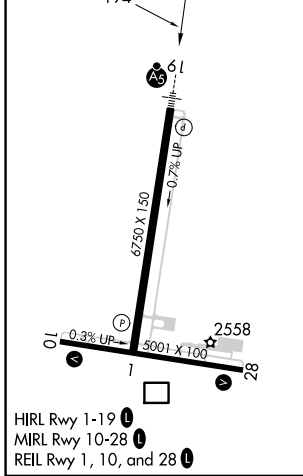
ASOS 121.55	CHARLESTON APP CON 125.4 269.125	UNICOM 123.0 (CTAF) 0
-----------------------	--	---------------------------------



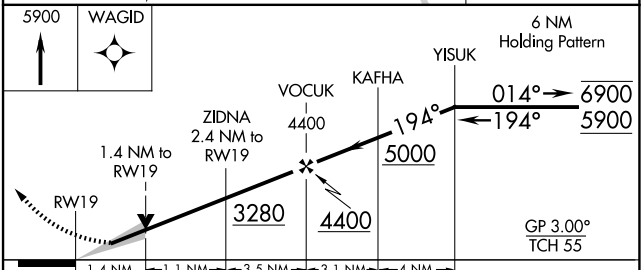
NE-4, 15 MAY 2025 to 12 JUN 2025

NE-4, 15 MAY 2025 to 12 JUN 2025

ELEV 2504	D	TDZE 2468
-----------	----------	-----------



- HIRL Rwy 1-19
- MIRL Rwy 10-28
- REIL Rwy 1, 10, and 28



CATEGORY	A	B	C	D
LPV DA		2688-1/2	220 (200-1/2)	
LNAV/VNAV DA		2818-5/8	350 (400-5/8)	
LNAV MDA	2940-1/2	472 (500-1/2)	2940-1	472 (500-1)
CIRCLING	3120-1 616 (700-1)	3180-1 676 (700-1)	3320-2 1/2 816 (900-2 1/2)	3500-3 996 (1000-3)