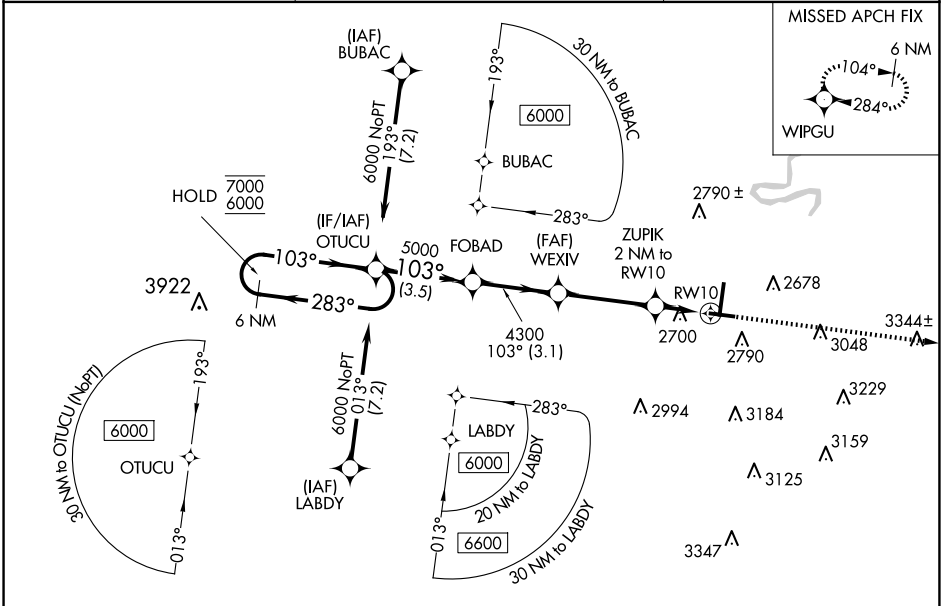


WAAS CH 82023 W10A	APP CRS 103°	Rwy Idg 5001 TDZE 2502 Apt Elev 2504
----------------------------------------	------------------------	-----------------------------------------------------------------

RNAV (GPS) RWY 10

RALEIGH COUNTY MEML (BKW)

RNP APCH - GPS.		MISSED APPROACH: Climb to 6300 direct WIPGU and hold, continue climb-in-hold to 6300.
For uncompensated Baro-VNAV systems, LNAV/VNAV NA below -14°C or above 54°C.	ASOS 121.55	CHARLESTON APP CON 125.4 269.125
		UNICOM 123.0 (CTAF)



NE-4, 15 MAY 2025 to 12 JUN 2025

NE-4, 15 MAY 2025 to 12 JUN 2025

ELEV 2504		D TDZE 2502	
6 NM Holding Pattern OTUCU		6300 WIPGU	
CATEGORY	A	B	C
LPV DA	2702-3/4		200 (200-3/4)
LNAV/VNAV DA	3016-13/8		514 (600-13/8)
LNAV MDA	2960-1	458 (500-1)	2960-13/8 458 (500-13/8)
CIRCLING	3120-1	3180-1	3320-2 1/2
	616 (700-1)	676 (700-1)	816 (900-2 1/2)
			3500-3
			996 (1000-3)

HIRL Rwy 1-19

MIRL Rwy 10-28

REIL Rwy 1, 10, and 28