

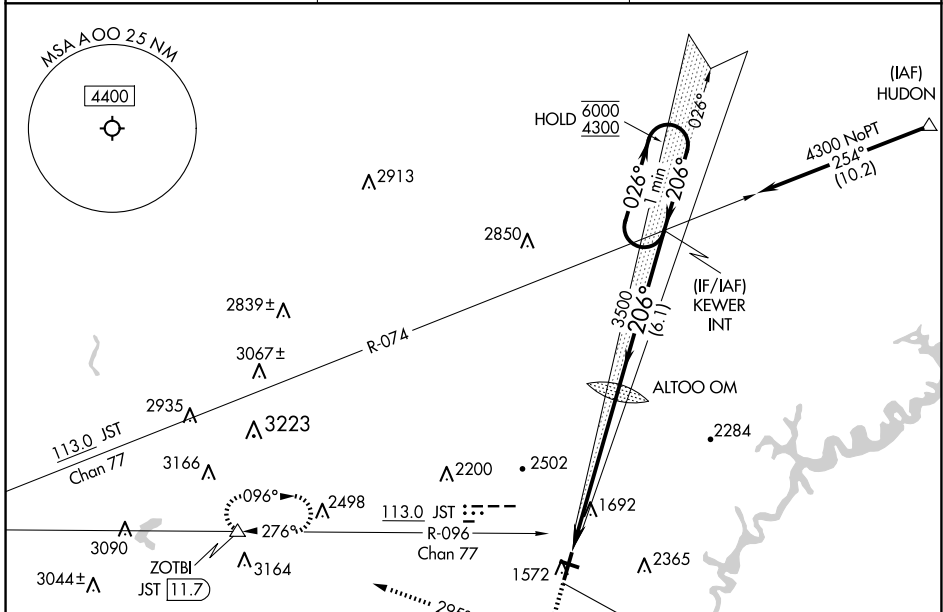
LOC I-AOO 111.1	APP CRS 206°	Rwy ldg TDZE 1486 Apt Elev 1503
---------------------------	------------------------	---

ILS or LOC RWY 21

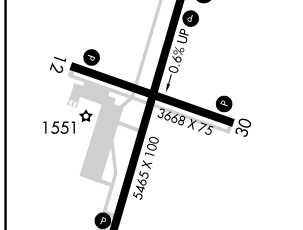
ALTOONA/BLAIR COUNTY (A00)

DME required.	MALSR 	MISSED APPROACH: Climb to 2100 then climbing right turn to 5000 on heading 295° and on JST R-096 to ZOTBI/JST 11.7 DME and hold, continue climb-in-hold to 5000.
Circling NA to Rwy 12 and 30. Circling NA for Cats C, D northwest of Rwy 12 and 21. For inop ALS increase S-LOC 21 visibility Cats C and D to 2 SM.		

ASOS 127.125	JOHNSTOWN APP CON * 121.2 299.2	CTAF 123.60
------------------------	---	-----------------------



ELEV 1503	D	TDZE 1486
-----------	----------	-----------



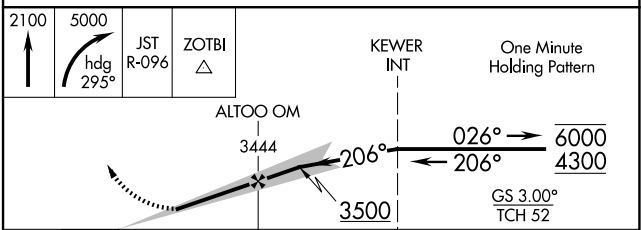
HIRL Rwy 3-21

MIRL Rwy 12-30

REIL Rwy 3, 12 and 30

FAF to MAP 6 NM

Knots	60	90	120	150	180
Min:Sec	6:00	4:00	3:00	2:24	2:00



CATEGORY	A	B	C	D
S-ILS 21		1686-1/2	200 (200-1/2)	
S-LOC 21	2240-1/2 754 (800-1/2)	2240-3/4 754 (800-3/4)	2240-1 3/4	754 (800-1 3/4)
<input checked="" type="checkbox"/> CIRCLING	2240-1 737 (800-1)	2240-1 1/4 737 (800-1 1/4)	2800-3 1297 (1300-3)	2840-3 1337 (1400-3)

NE-4, 07 AUG 2025 to 04 SEP 2025

NE-4, 07 AUG 2025 to 04 SEP 2025