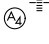



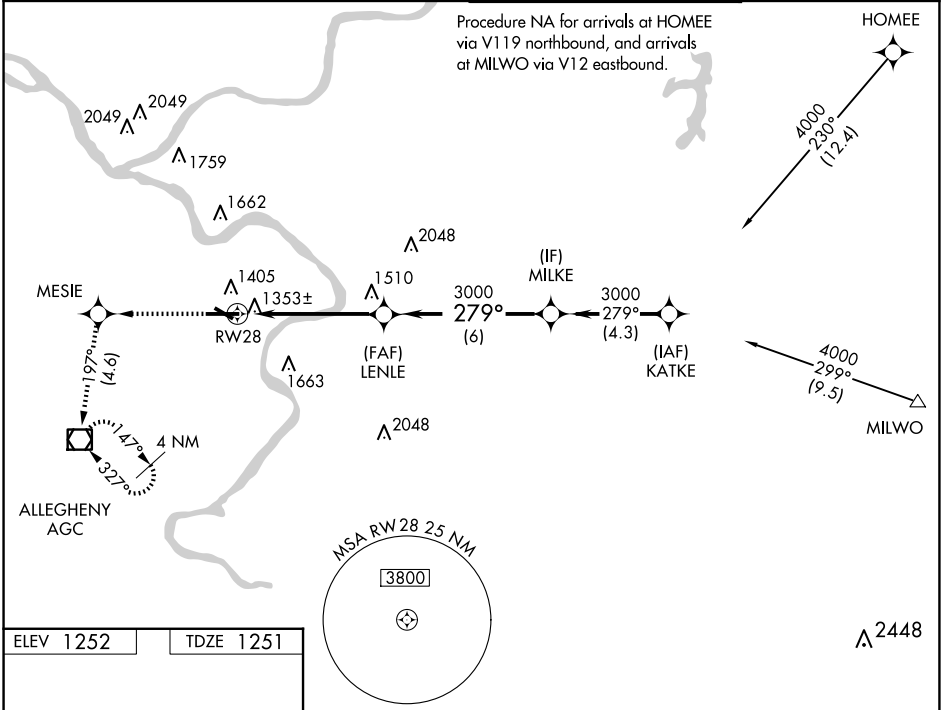
WAAS CH 65625 W28A	APP CRS 279°	Rwy ldg TDZE 1251 Apt Elev 1252	6501
--	------------------------	---	-------------

RNAV (GPS) RWY 28

ALLEGHENY COUNTY (AGC)

RNP APCH - GPS.	MALS 	MISSED APPROACH: Climb to 3000 direct MESIE and on course 197° to AGC VOR/DME and hold, continue climb-in-hold to 3000.
<p> For uncompensated Baro-VNAV systems, LNAV/VNAV NA below -16°C or above 54°C. Circling Rwy 13 NA at night. For inop ALS, increase LPV all Cats visibility to RVR 4500 and LNAV/VNAV all Cats visibility to RVR 5500.</p>		

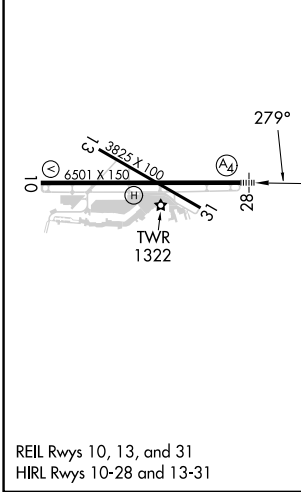
ATIS 120.55	PITTSBURGH APP CON 119.35 285.575	ALLEGHENY TOWER 121.1 239.0	GND CON 121.7
-----------------------	---	---------------------------------------	-------------------------



NE-4, 15 MAY 2025 to 12 JUN 2025

NE-4, 15 MAY 2025 to 12 JUN 2025

ELEV 1252	TDZE 1251
-----------	-----------



3000	MESIE	crs 197°	AGC	LENLE	MILKE	Procedure Turn NA
				3000	3000	GP 3.00° TCH 51
CATEGORY	A	B	C	D		
LPV DA		1563/24	312 (400-½)			
LNAV/VNAV DA		1625/35	374 (400-⅝)			
LNAV MDA	1700/24	449 (500-½)		1700/45	449 (500-⅝)	
<input checked="" type="checkbox"/> CIRCLING	1720-1¼	468 (500-1¼)		1980-2 728 (800-2)	1980-2¼ 728 (800-2¼)	