

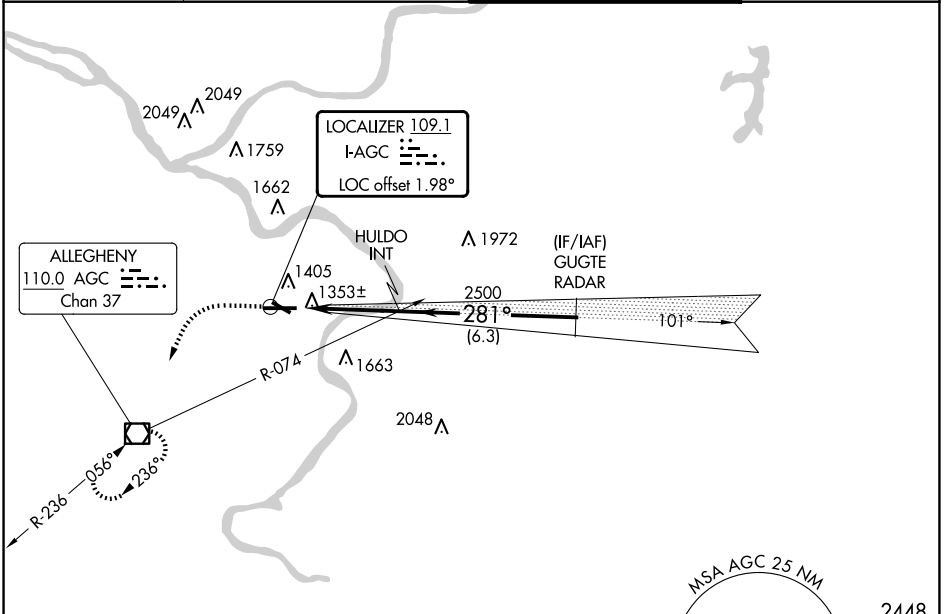
LOC I-AGC <b>109.1</b>	APP CRS <b>281°</b>	Rwy ldg TDZE Apt Elev	<b>6501</b> <b>1251</b> <b>1252</b>
---------------------------	------------------------	-----------------------------	---

# ILS or LOC RWY 28

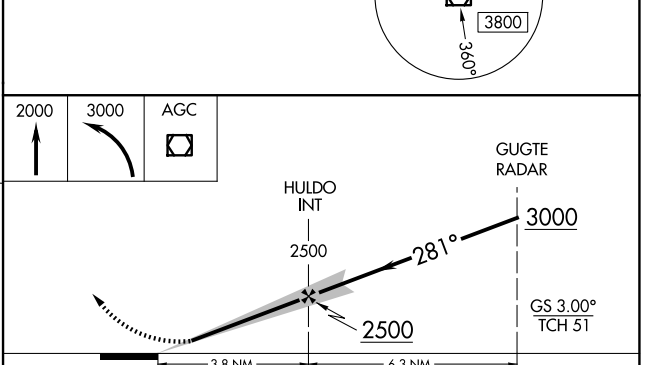
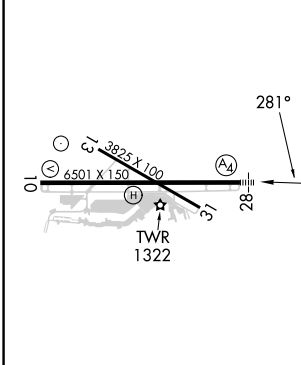
ALLEGHENY COUNTY (AGC)

RADAR required.		MALS	MISSED APPROACH: Climb to 2000 then climbing left turn to 3000 direct AGC VOR/DME and hold, continue climb-in-hold to 3000.
⚠ Autopilot coupled approach NA below 1900. Circling Rwy 13 NA at night. For inop ALS, increase S-LOC Cats C and D visibility to RVR 6000. Inop table does not apply to S-ILS 28.			

ATIS <b>120.55</b>	PITTSBURGH APP CON <b>119.35 285.575</b>	ALLEGHENY TOWER <b>121.1 239.0</b>	GND CON <b>121.7</b>
-----------------------	---	---------------------------------------	-------------------------



ELEV 1252	TDZE 1251
-----------	-----------



REIL Rws 10, 13, and 31 HIRL Rws 10-28 and 13-31	FAF to MAP 3.8 NM	<table border="1"> <tr> <th>CATEGORY</th> <th>A</th> <th>B</th> <th>C</th> <th>D</th> </tr> <tr> <td>S-ILS 28</td> <td colspan="4">1501/40 250 (300-¾)</td> </tr> <tr> <td>S-LOC 28</td> <td>1660/40</td> <td>409 (500-¾)</td> <td>1660/50</td> <td>409 (500-1)</td> </tr> <tr> <td>CIRCLING</td> <td>1720-1</td> <td>468 (500-1)</td> <td>1980-2 728 (800-2)</td> <td>1980-2¼ 728 (800-2¼)</td> </tr> </table>				CATEGORY	A	B	C	D	S-ILS 28	1501/40 250 (300-¾)				S-LOC 28	1660/40	409 (500-¾)	1660/50	409 (500-1)	CIRCLING	1720-1	468 (500-1)	1980-2 728 (800-2)	1980-2¼ 728 (800-2¼)
CATEGORY	A	B	C	D																					
S-ILS 28	1501/40 250 (300-¾)																								
S-LOC 28	1660/40	409 (500-¾)	1660/50	409 (500-1)																					
CIRCLING	1720-1	468 (500-1)	1980-2 728 (800-2)	1980-2¼ 728 (800-2¼)																					
<table border="1"> <tr> <th>Knots</th> <td>60</td> <td>90</td> <td>120</td> <td>150</td> <td>180</td> </tr> <tr> <th>Min:Sec</th> <td>3:48</td> <td>2:32</td> <td>1:54</td> <td>1:31</td> <td>1:16</td> </tr> </table>	Knots	60	90	120	150	180	Min:Sec	3:48	2:32	1:54	1:31	1:16													
Knots	60	90	120	150	180																				
Min:Sec	3:48	2:32	1:54	1:31	1:16																				

NE-4, 15 MAY 2025 to 12 JUN 2025

NE-4, 15 MAY 2025 to 12 JUN 2025