

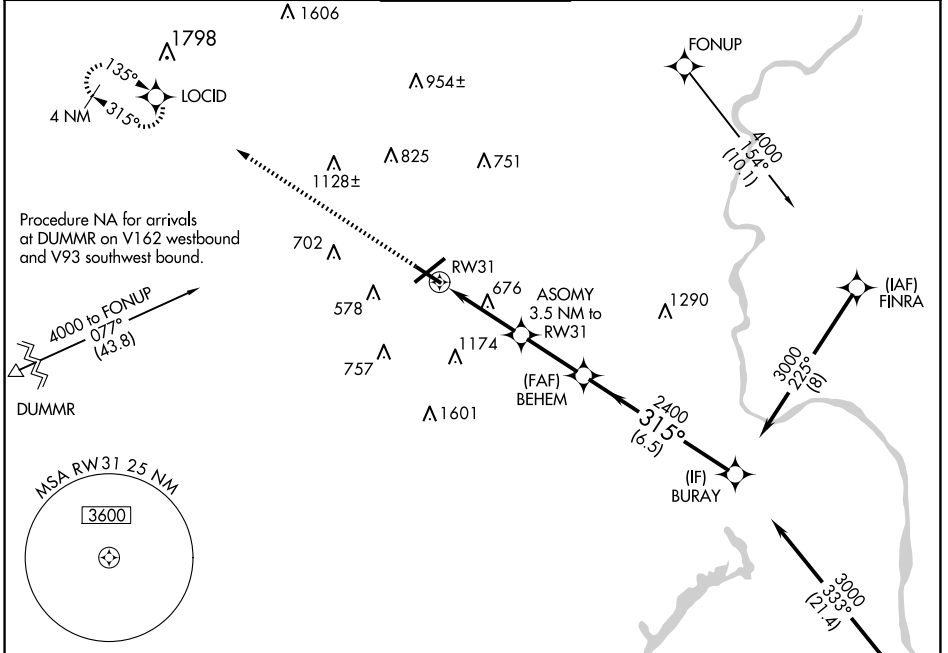
WAAS CH 82499 W31A	APP CRS 315°	Rwy Idg TDZE 383 Apt Elev 394
--	------------------------	---

RNAV (GPS) RWY 31

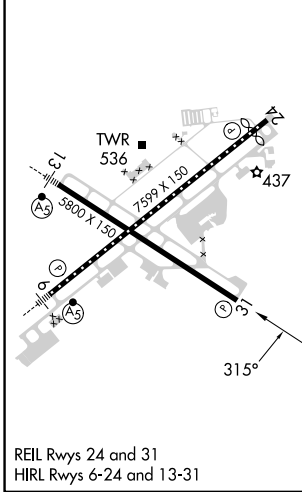
LEHIGH VALLEY INTL (ABE)

RNP APCH - GPS		MISSED APPROACH: Climb to 3000 direct LOCID and hold.	
<p>▼ For uncompensated Baro-VNAV systems, LNAV/VNAV NA below -8°C or above 54°C. Rwy 31 helicopter visibility reduction below 3/4 SM NA.</p>			

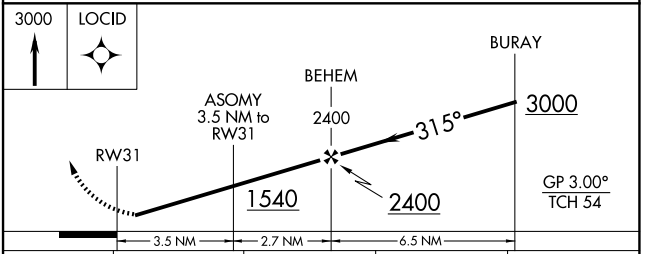
ATIS 126.975	ALLENTOWN APP CON 119.65 124.45 351.8	ALLENTOWN TOWER 120.5 257.95	GND CON 121.9 257.95	CLNC DEL 124.05 257.95
------------------------	---	--	--------------------------------	----------------------------------



ELEV 394	D	TDZE 383
----------	----------	----------



ALLENTOWN, PENNSYLVANIA
Amdt 2C 16MAY24



CATEGORY	A	B	C	D
LPV DA		633-3/4	250 (300-3/4)	
LNAV/VNAV DA		758-1 1/4	375 (400-1 1/4)	
LNAV MDA	940-1	557 (600-1)	940-1 5/8	557 (600-1 1/4)
C CIRCLING	940-1	546 (600-1)	1180-2 1/4 786 (800-2 1/4)	1600-3 1206 (1300-3)

40°39'N-75°26'W

LEHIGH VALLEY INTL (ABE) RNAV (GPS) RWY 31

NE-4, 15 MAY 2025 to 12 JUN 2025

NE-4, 15 MAY 2025 to 12 JUN 2025