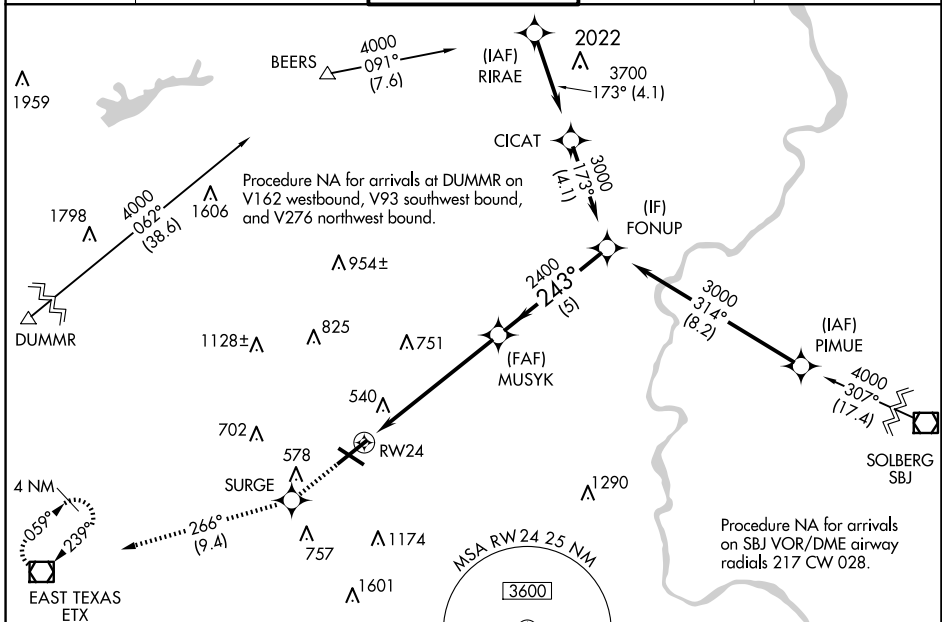


WAAS CH <b>40332</b> <b>W24A</b>	APP CRS <b>243°</b>	Rwy Idg TDZE Apt Elev	<b>7089</b> <b>387</b> <b>394</b>
--	------------------------	-----------------------------	---

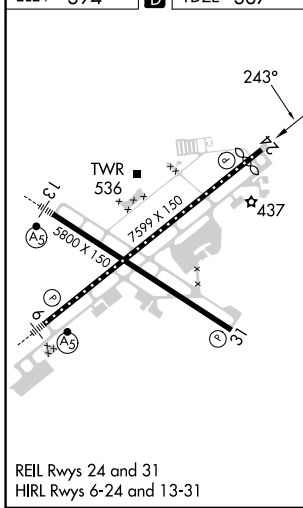
# RNAV (GPS) RWY 24

LEHIGH VALLEY INTL (ABE)

RNP APCH - GPS.		MISSED APPROACH: Climb to 3000 direct SURGE and on track 266° to ETX VOR/DME and hold.	
⚠ For uncompensated Baro-VNAV systems, LNAV/VNAV NA below -8°C or above 54°C.			
ATIS <b>126.975</b>	ALLENTOWN APP CON <b>119.65 124.45 351.8</b>	ALLENTOWN TOWER <b>120.5 257.95</b>	GND CON <b>121.9 257.95</b>
		CLNC DEL <b>124.05 257.95</b>	



ELEV 394	<b>D</b>	TDZE 387
----------	----------	----------



3000	SURGE	ir 266°	ETX	VGSI and RNAV glidepath not coincident (VGSI Angle 3.00/TCH 71).
				FONUP
				3000
				GP 3.00° TCH 55
CATEGORY	A	B	C	D
LPV DA	587/40		200 (200-3/4)	
LNAV/VNAV DA	783-1 1/4		396 (400-1 1/4)	
LNAV MDA	860/55 473 (500-1)		860-1 3/8 473 (500-1 3/8)	
<b>C</b> CIRCLING	900-1 506 (600-1)		1180-2 1/4 786 (800-2 1/4) 1600-3 1206 (1300-3)	

NE-4, 15 MAY 2025 to 12 JUN 2025

NE-4, 15 MAY 2025 to 12 JUN 2025