

|             |          |             |
|-------------|----------|-------------|
| APP CRS     | Rwy Idg  | <b>3204</b> |
| <b>246°</b> | TDZE     | <b>2098</b> |
|             | Apt Elev | <b>2099</b> |

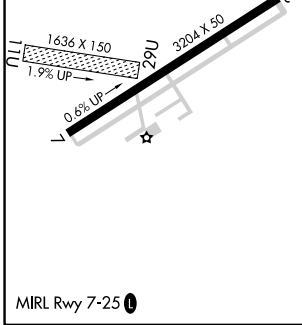
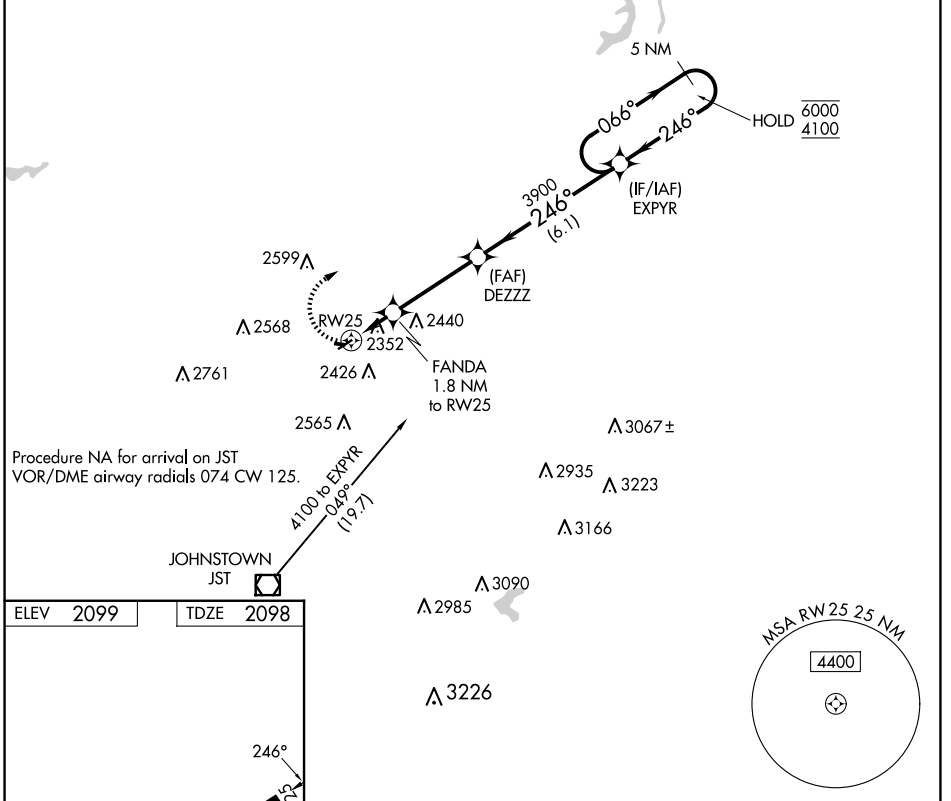
# RNAV (GPS) RWY 25

EBENSBURG (9G8)

|   |  |   |
|---|--|---|
| RNP APCH - GPS.   |  | MISSED APPROACH: Climbing right turn to 4100 direct EXPYR and hold. |
| <p><b>⚠</b> Procedure NA at night. Rwy 25 helicopter visibility reduction below 1 SM NA.</p> <p><b>⚠</b> Obtain local altimeter setting on CTAF; when not received, use Johnstown altimeter setting and increase all MDA 60 feet and visibility Cat C ¼ SM.</p> |  |   |

JOHNSTOWN APP CON ★  
**121.2 299.2**

UNICOM  
**122.8 (CTAF) 0**



|   |        |                                   |                         |
|---|--------|-----------------------------------|-------------------------|
| ELEV  | 2099   | TDZE                              | 2098                    |
| <p>4100 EXPYR Visual Segment - Obstacles.</p> <p>5 NM Holding Pattern</p> <p>EXPYR</p> <p>6000</p> <p>4100</p> <p>066° →</p> <p>← 246°</p> <p>DEZZZ</p> <p>3900</p> <p>FANDA 1.8 NM to RW25</p> <p>RW25</p> <p>2720</p> <p>1.8 NM</p> <p>3.6 NM</p> <p>6.1 NM</p> |        | <p>MSA RW25 25 NM</p> <p>4400</p> |                         |
| CATEGORY  | A      | B                                 | C                       |
| LNVA MDA  | 2620-1 | 522 (600-1)                       | 2620-1½<br>522 (600-1½) |
|   |        |                                   | D                       |
|   |        |                                   | NA                      |

NE-4, 15 MAY 2025 to 12 JUN 2025

NE-4, 15 MAY 2025 to 12 JUN 2025