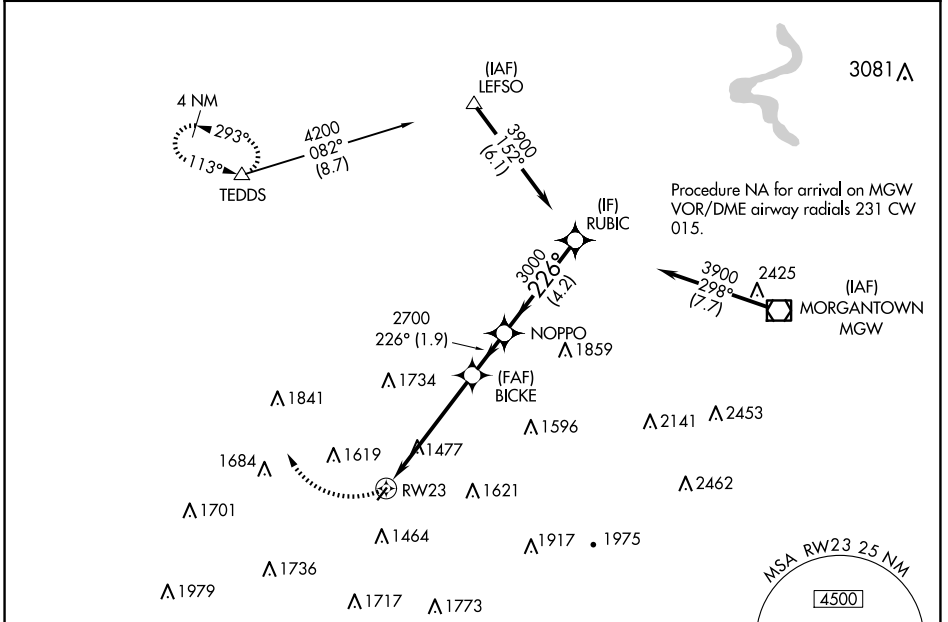


APP CRS 226°	Rwy Idg 2965
	TDZE 1032
	Apt Elev 1032

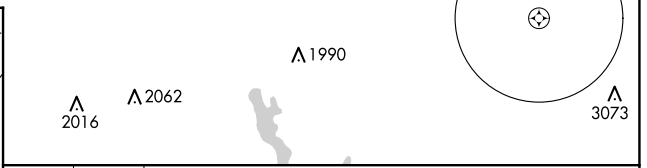
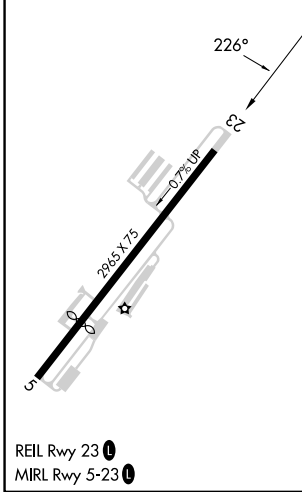
RNAV (GPS) RWY 23

FAIRMONT MUNI-FRANKMAN FLD (4G7)

RNP APCH.		MISSED APPROACH: Climbing right turn to 4000 direct TEDDS and hold.	
<p>Procedure NA at night. Rwy 23 helicopter visibility reduction below 1 SM NA.</p>			
CKB ASOS-3 127,825	CLARKSBURG APP CON* 121.15 284.65	CLNC DEL 118.35	UNICOM 122.8 (CTAF)



ELEV 1032	TDZE 1032
-----------	-----------



	Visual Segment - Obstacles.			
	RWY 23		RUBIC	
	BICKE		NOPPO	
	2700		3000	
	5.1 NM		4.2 NM	
CATEGORY	A	B	C	D
LNAV MDA	1840-1 808 (900-1)	1840-1¼ 808 (900-1¼)	1840-2½ 808 (900-2½)	NA
CIRCLING	1840-1 808 (900-1)	1840-1¼ 808 (900-1¼)	2020-3 988 (1000-3)	NA

NE-4, 15 MAY 2025 to 12 JUN 2025

NE-4, 15 MAY 2025 to 12 JUN 2025