

WAAS CH 97416 W25A	APP CRS 252°	Rwy Idg TDZE Apt Elev	4000 643 643
----------------------------------------	------------------------	-----------------------------	-----------------------------------------

RNAV (GPS) RWY 25

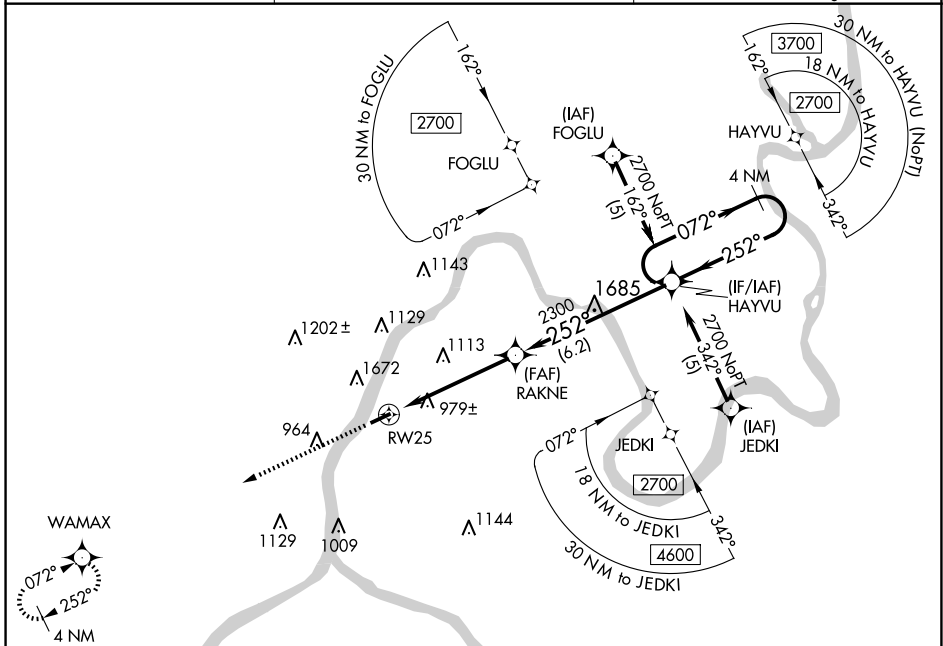
MASON COUNTY (3I2)

RNP APCH - GPS.

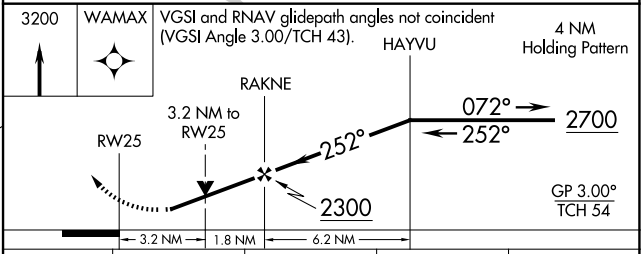
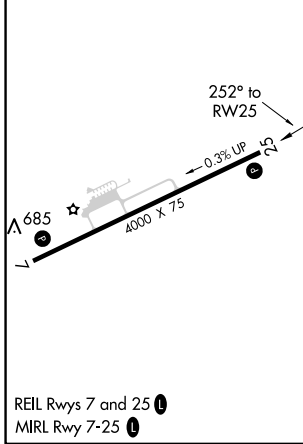
⚠ Circling NA NW of Rwy 7-25. Baro-VNAV NA when using Athens/Albany, OH altimeter setting. For uncompensated Baro-VNAV systems, LNAV/VNAV NA below -16°C or above 47°C. Rwy 25 helicopter visibility reduction below 3/4 SM NA. When local altimeter setting not received, use Athens/Albany, OH altimeter setting and increase all DA 61 feet and all MDA 80 feet; increase LPV all Cats visibility 1/4 mile and increase LNAV-VNAV all Cats visibility 1 mile. VDP NA when using Ohio VNAV altimeter setting.

MISSED APPROACH:
Climb to 3200 direct WAMAX and hold.

AWOS-3 119.675	HUNTINGTON APP CON 128.4 270.1	UNICOM 122.8 (CTAF) 0
--------------------------	------------------------------------------	---------------------------------



ELEV 643	TDZE 643
----------	----------



CATEGORY	A	B	C	D
LPV DA		1430-2 ³ / ₄	787 (800-2 ³ / ₄)	
LNAV/VNAV DA		1727-4	1084 (1100-4)	
LNAV MDA	1700-1 ¹ / ₄ 1057 (1100-1 ¹ / ₄)	1700-1 ¹ / ₂ 1057 (1100-1 ¹ / ₂)	1700-3	1057 (1100-3)
CIRCLING	1700-1 ¹ / ₄ 1057 (1100-1 ¹ / ₄)	1700-1 ¹ / ₂ 1057 (1100-1 ¹ / ₂)	1700-3	1057 (1100-3)

NE-4, 15 MAY 2025 to 12 JUN 2025

NE-4, 15 MAY 2025 to 12 JUN 2025