

LOC I-SOZ 108.7	APP CRS 246°	Rwy Idg TDZE Apt Elev	5002 2240 2275
---------------------------	------------------------	-----------------------------	---

LOC RWY 25

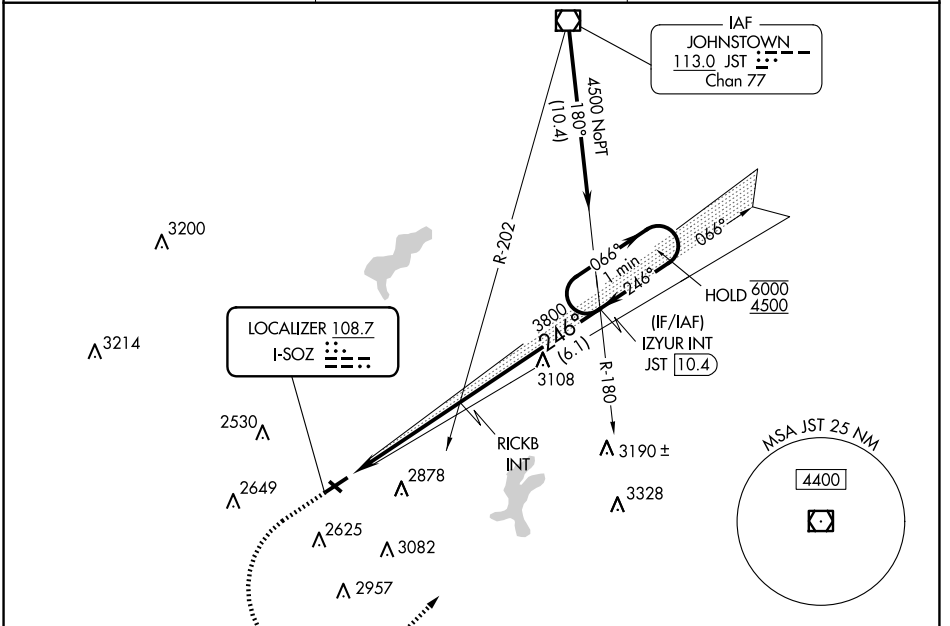
SOMERSET COUNTY (2G9)

DME required.

▼ Rwy 25 helicopter visibility reduction below 1 SM NA.
▲ Circling NA to Rws 14 and 32. Procedure NA at night.

MISSED APPROACH: Climb to 3400 then climbing left turn to 4500 on heading 055° and JST VOR/DME R-180 to IZYUR INT/JST 10.4 DME and hold.

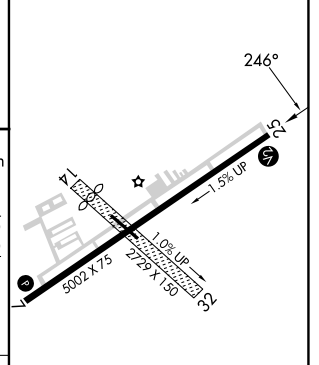
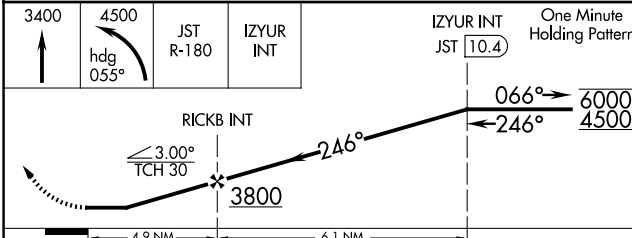
AWOS-3P 133.8	JOHNSTOWN APP CON ★ 121.2 299.2	UNICOM 122.8 (CTAF)
-------------------------	---	-------------------------------



NE-4, 15 MAY 2025 to 12 JUN 2025

NE-4, 15 MAY 2025 to 12 JUN 2025

ELEV 2275	TDZE 2240
-----------	-----------



CATEGORY	A	B	C	D
S-25	2860-1	620 (600-1)	2860-1¾	620 (600-1¾)
C CIRCLING	2860-1 585 (600-1)	2920-1 645 (700-1)	3520-3	1245 (1300-3)

MIRL Rwy 7-25

REIL Rws 7 and 25

FAF to MAP 4.9 NM

Knots	60	90	120	150	180
Min:Sec	4:54	3:16	2:27	1:58	1:38