

| | | | |
|--|------------------------|-----------------------------|---|
| WAAS CH 90532 W29A | APP CRS 286° | Rwy Idg TDZE Apt Elev | 3602 120 121 |
|--|------------------------|-----------------------------|---|

RNAV (GPS) RWY 29

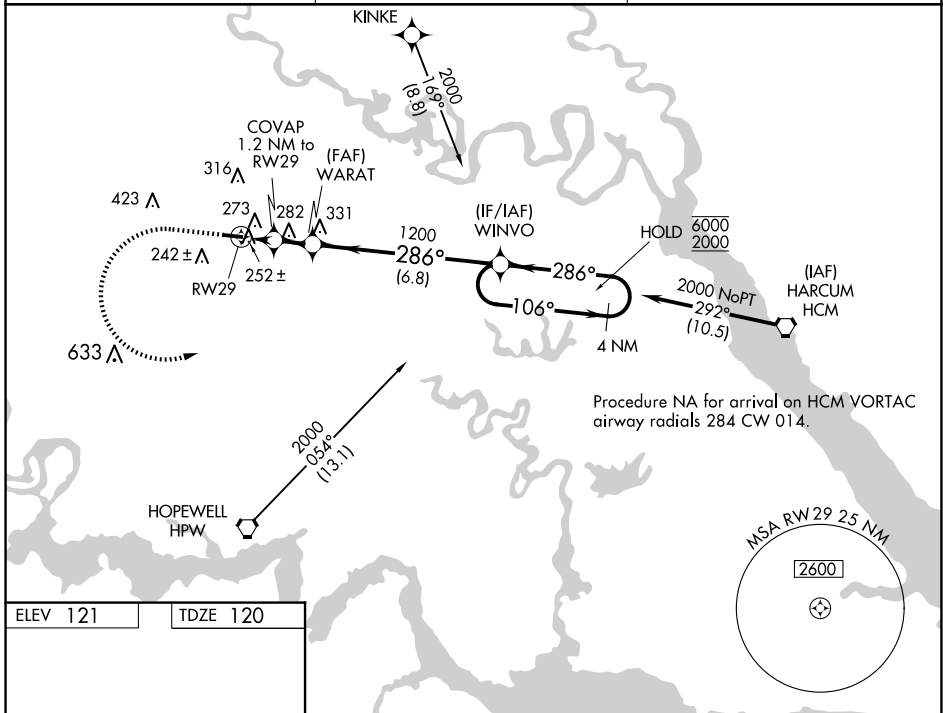
NEW KENT COUNTY (W96)

RNP APCH - GPS.

Rwy 29 helicopter visibility reduction below 1 SM NA.
 Procedure NA at night. When local altimeter setting not received,
 use RIC altimeter setting: increase all MDAs 40 feet and LNAV visibility
 Cat C ½ SM; increase LP and Circling visibility Cat C ¼ SM.

MISSED APPROACH: Climb to 900 then climbing left turn to 2000 direct WINVO and hold.

| | | |
|--------------------------|---|---------------------------------|
| AWOS-3 119,875 | POTOMAC APP CON 126.4 282,375 | UNICOM 122.8 (CTAF) 0 |
|--------------------------|---|---------------------------------|



| | |
|----------|----------|
| ELEV 121 | TDZE 120 |
|----------|----------|

MIRL Rwy 11-29 0
 REIL Rwy 11 and 29 0

| | | | | |
|-------------------|-------|-------------|--|----------------------|
| 900 | 2000 | WINVO | VGSI and descent angles not coincident (VGSI Angle 4.00/TCH 45). | 4 NM Holding Pattern |
| | | | | |
| CATEGORY | A | B | C | D |
| LP MDA | 540-1 | 420 (500-1) | 540-1 1/8 420 (500-1 1/8) | NA |
| LNAV MDA | 560-1 | 440 (500-1) | 560-1 1/4 440 (500-1 1/4) | NA |
| C CIRCLING | 620-1 | 499 (500-1) | 760-1 3/4 639 (700-1 3/4) | NA |

NE-3, 15 MAY 2025 to 12 JUN 2025

NE-3, 15 MAY 2025 to 12 JUN 2025