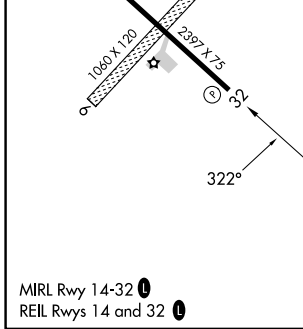
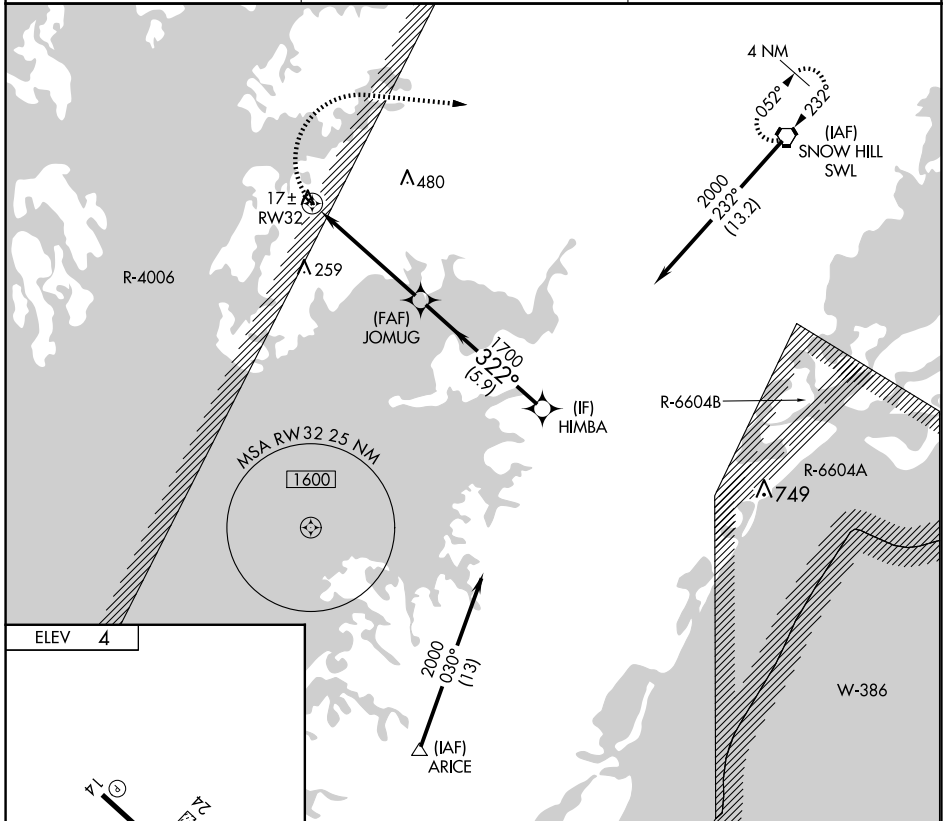


APP CRS 322°	Rwy Idg TDZE Apt Elev	N/A N/A 4
------------------------	-----------------------------	--------------------------------------

RNAV (GPS)-B

CRISFIELD-SOMERSET COUNTY (W41)

RNP APCH. Circling NA to Rwys 6 and 24. NA Procedure NA at night. Use Wallops Island altimeter setting.		MISSED APPROACH: Climbing right turn to 2000 direct SWL VORTAC and hold.
WAL ASOS 119.175	PATUXENT APP CON ★ 127.95 314.0	UNICOM 122.8 (CTAF) 0



ELEV	4
Visual Segment - Obstacles.	SWL (2000) HIMBA (2000) JOMUG (1700) RW32 (1700)
Visual Segment Distances	RW32 to JOMUG: 5.2 NM JOMUG to HIMBA: 5.9 NM
CATEGORY	A
C CIRCLING	520-1 516 (600-1)
	NA

NE-3, 15 MAY 2025 to 12 JUN 2025

NE-3, 15 MAY 2025 to 12 JUN 2025