

APP CRS	Rwy Ldg	N/A
214°	TDZE	N/A
	Apt Elev	526

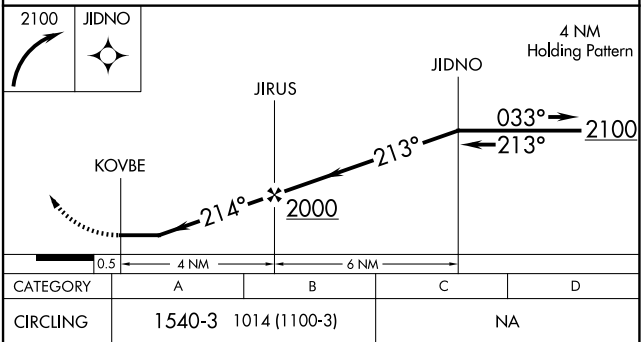
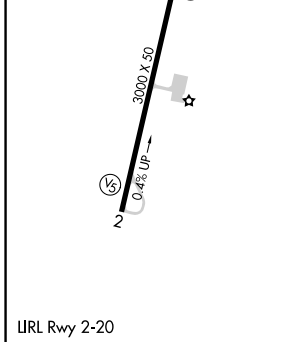
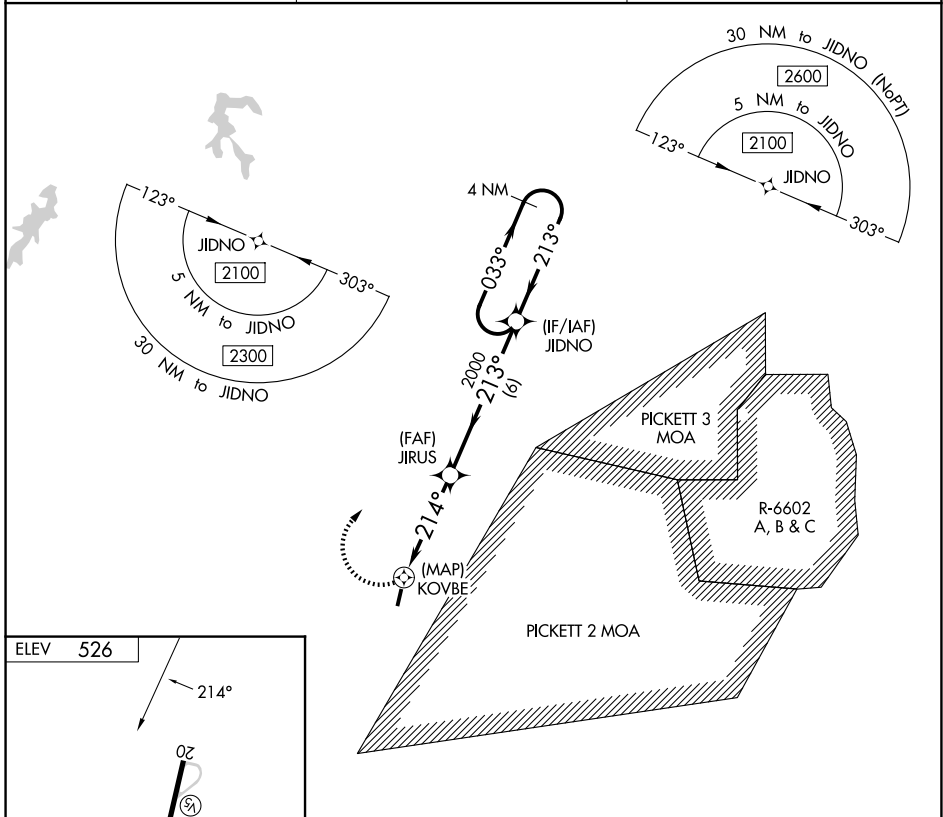
# RNAV (GPS)-B

LUNENBURG COUNTY (W31)

**⚠** Helicopter visibility reduction below 1 SM NA. DME/DME RNP-0.3 NA. Procedure NA at night. When local altimeter setting not received, use Blackstone altimeter setting and increase all MDA 60 feet.

**⚠** MISSED APPROACH: Climbing right turn to 2100 direct JIDNO and hold.

AWOS-3 <b>123.875</b>	WASHINGTON CENTER <b>118.75 377.1</b>	UNICOM <b>122.7</b> (CTAF)
--------------------------	------------------------------------------	-------------------------------



NE-3, 07 AUG 2025 to 04 SEP 2025

NE-3, 07 AUG 2025 to 04 SEP 2025