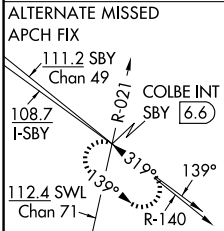
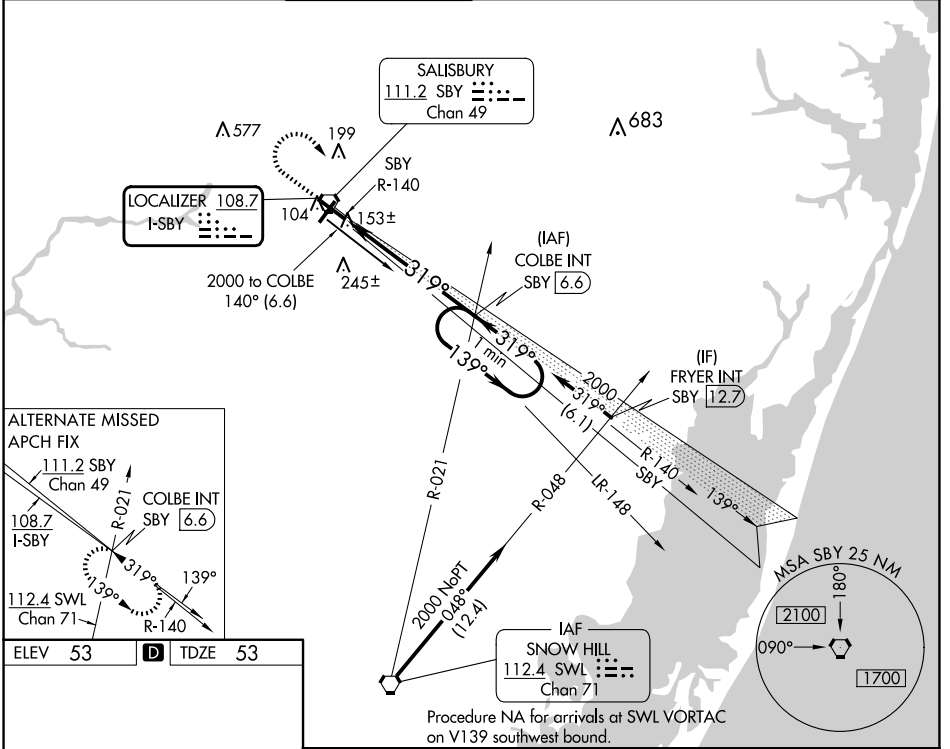


LOC I-SBY 108.7	APP CRS 319°	Rwy Idg 6400	TDZE 53
		Apt Elev 53	

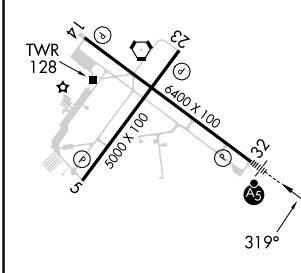
ILS or LOC RWY 32

SALISBURY-OCEAN CITY WICOMICO RGNL (SBY)

<p>▼ When local altimeter setting not received, use Georgetown altimeter setting: increase DA to 305 feet; increase all MDA 60 feet and S-LOC 32 Cat C and Circling Cat D visibility ¼ SM.</p>		<p>MALSRR</p>	<p>MISSED APPROACH: Climb to 700 then climbing right turn to 2000 on heading 170° and on SBY VORTAC R-140 to COLBE INT/SBY VORTAC 6.6 DME and hold.</p>			
ASOS 118.325	PATUXENT APP CON★ 127.95 314.0	SALISBURY TOWER★ 119.425 (CTAF) 0	GND CON 123.775	CLNC DEL 123.775	CLNC DEL 132.45 (when twr closed)	UNICOM 122.95



ELEV 53	D	TDZE 53
---------	----------	---------



REIL Rwy 5, 14 and 23 **0**
MIRL Rwy 5-23 **0**
HIRL Rwy 14-32 **0**

FAF to MAP 5.9 NM

Knots	60	90	120	150	180
Min:Sec	5:54	3:56	2:57	2:22	1:58

700	2000	SBY R-140	COLBE INT	COLBE INT SBY 6.6	One Minute Holding Pattern
*LOC only					
SBY 0.8	*SBY 1.8	2000	2000	2000	GS 3.00° TCH 54
1 NM		4.9 NM			
CATEGORY	A	B	C	D	
S-ILS 32	253-½		200 (200-½)		
S-LOC 32	420-½		367 (400-½)		420-¾ 367 (400-¾)
CIRCLING	480-1 427 (500-1)	520-1 467 (500-1)	560-1½ 507 (600-1½)	700-2 647 (700-2)	

NE-3, 15 MAY 2025 to 12 JUN 2025

NE-3, 15 MAY 2025 to 12 JUN 2025