

VORTAC RIC 114.1 Chan 88	APP CRS 188°	Rwy Idg 6607 TDZE 168 Apt Elev 168
--	------------------------	---

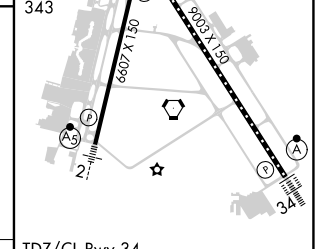
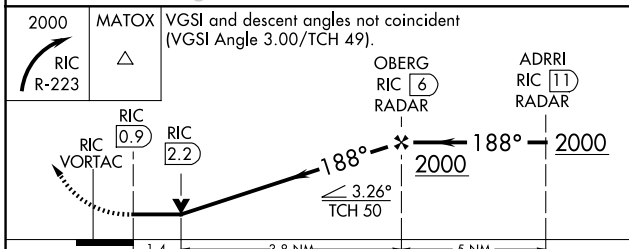
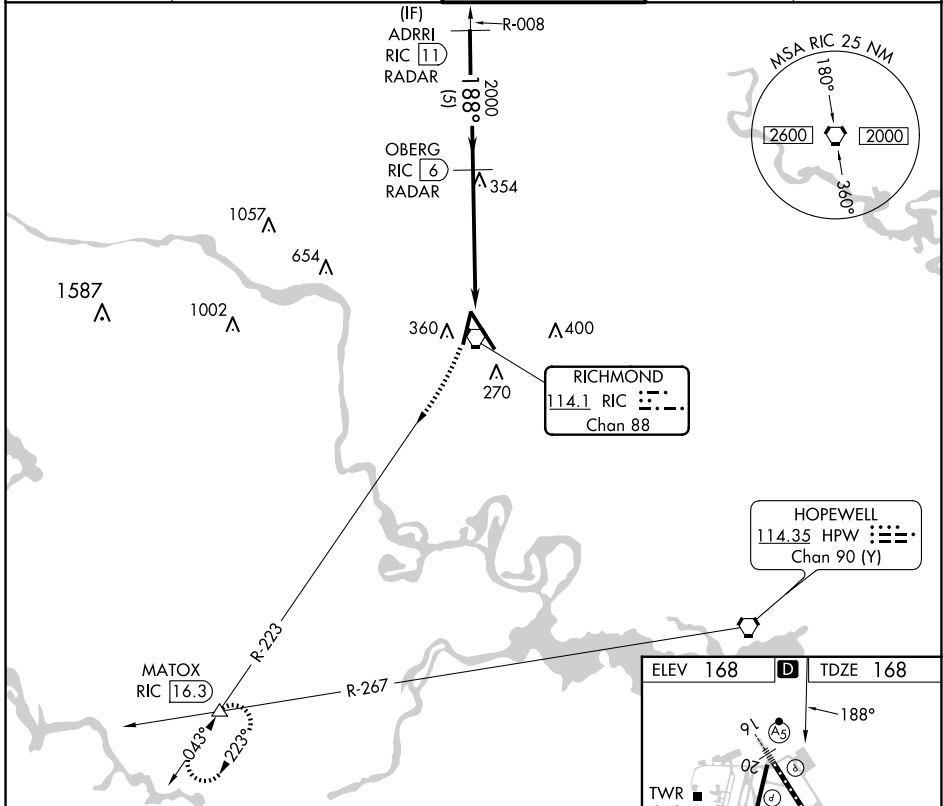
VOR RWY 20

RICHMOND INTL (RIC)

RADAR required for procedure entry. DME or RADAR required. MISSED APPROACH: Climbing right turn to 2000 on RIC R-223 to MATOX INT/RIC 16.3 DME and hold.

▼ Rwy 20 helicopter visibility reduction below 3/4 SM NA.

ATIS 119.15 263.025	POTOMAC APP CON 126.4 282.375 (001°-185°) 126.75 307.2 (186°-360°)	RICHMOND TOWER 121.1 257.8	GND CON 121.9 348.6	CLNC DEL 127.55 348.6
-------------------------------	--	--------------------------------------	-------------------------------	---------------------------------



CATEGORY	A	B	C	D
S-20	660-1 492 (500-1)		660-1 3/8 492 (500-1 3/8)	
CIRCLING	660-1 492 (500-1)		700-1 1/2 532 (600-1 1/2)	720-2 552 (600-2)

FAF to MAP 5.2 NM					
Knots	60	90	120	150	180
Min:Sec	5:12	3:28	2:36	2:05	1:44

NE-3, 15 MAY 2025 to 12 JUN 2025

NE-3, 15 MAY 2025 to 12 JUN 2025