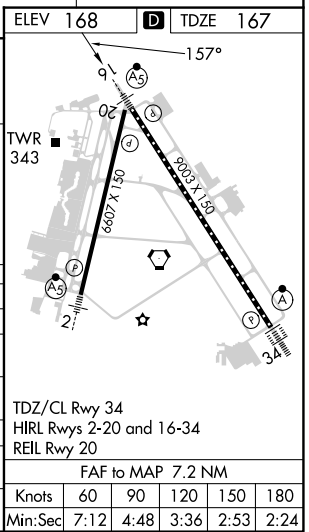
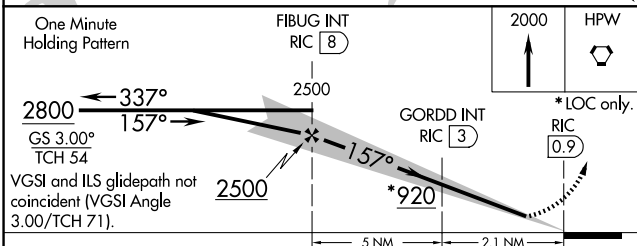
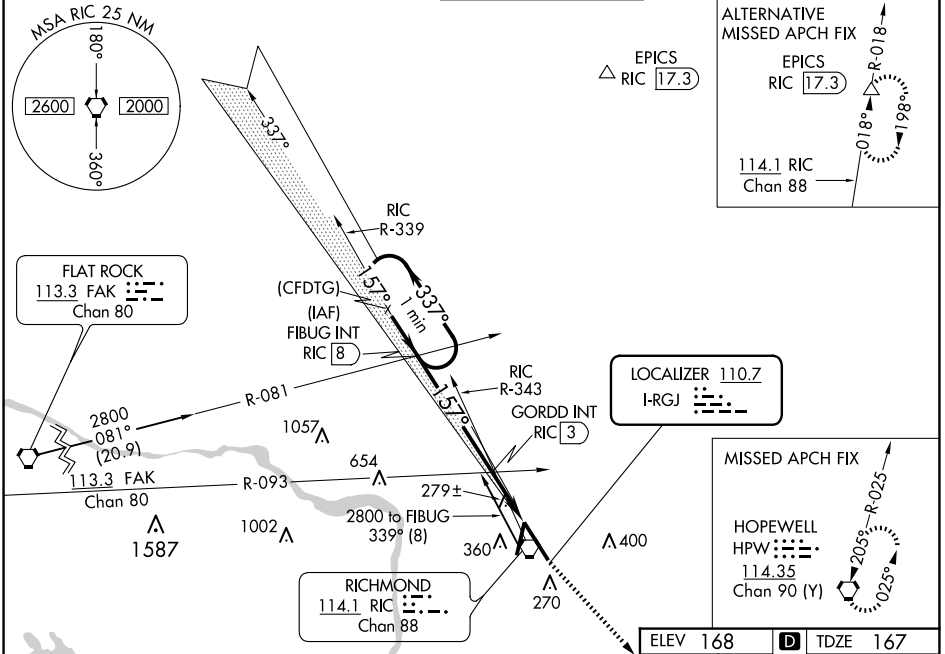


LOC I-RGJ 110.7	APP CRS 157°	Rwy Idg TDZE Apt Elev	9003 167 168
---------------------------	------------------------	-----------------------------	---

ILS or LOC RWY 16

RICHMOND INTL (RIC)

▽ For inop ALS, increase S-LOC 16 Cats C and D visibility to 2 SM. GORDD Fix ▲ Minimums: for inop ALS, increase S-LOC 16 Cats C and D visibility to 1½ SM. **RVR 1800 authorized with use of FD or AP or HUD to DA. % DME from RIC VORTAC.	MALSR	MISSED APPROACH: Climb to 2000 direct HPW VORTAC and hold.		
	ATIS 119.15 263.025	POTOMAC APP CON 126.4 282.375 (001°-185°) 126.75 307.2 (186°-360°)	RICHMOND TOWER 121.1 257.8	GND CON 121.9 348.6



CATEGORY	A	B	C	D
S-ILS 16 **	367/24 200 (200-½)			
S-LOC 16	920/24 753 (800-½)	920/40 753 (800-¾)	920-1¾	753 (800-1¾)
C CIRCLING	920-1 752 (800-1)	920-1¼ 752 (800-1¼)	920-2½	752 (800-2½)
GORDD FIX MINIMUMS %				
S-LOC 16	580/24 413 (500-½)	580/40 413 (500-¾)		
C CIRCLING	660-1 492 (500-1)	700-1½ 532 (600-1½)	720-2 552 (600-2)	

NE-3, 15 MAY 2025 to 12 JUN 2025

NE-3, 15 MAY 2025 to 12 JUN 2025