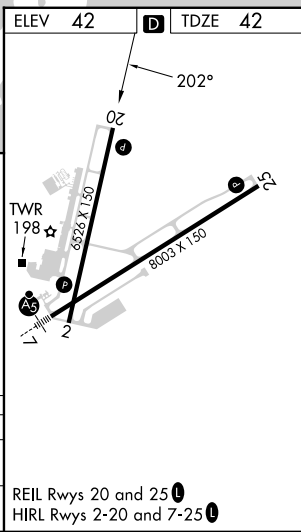
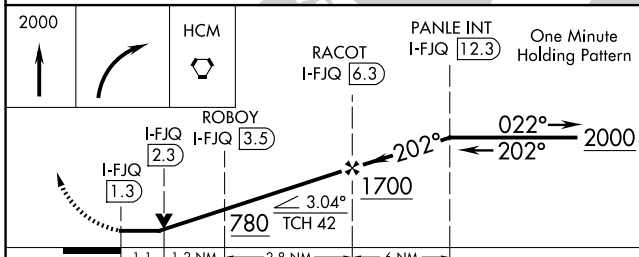
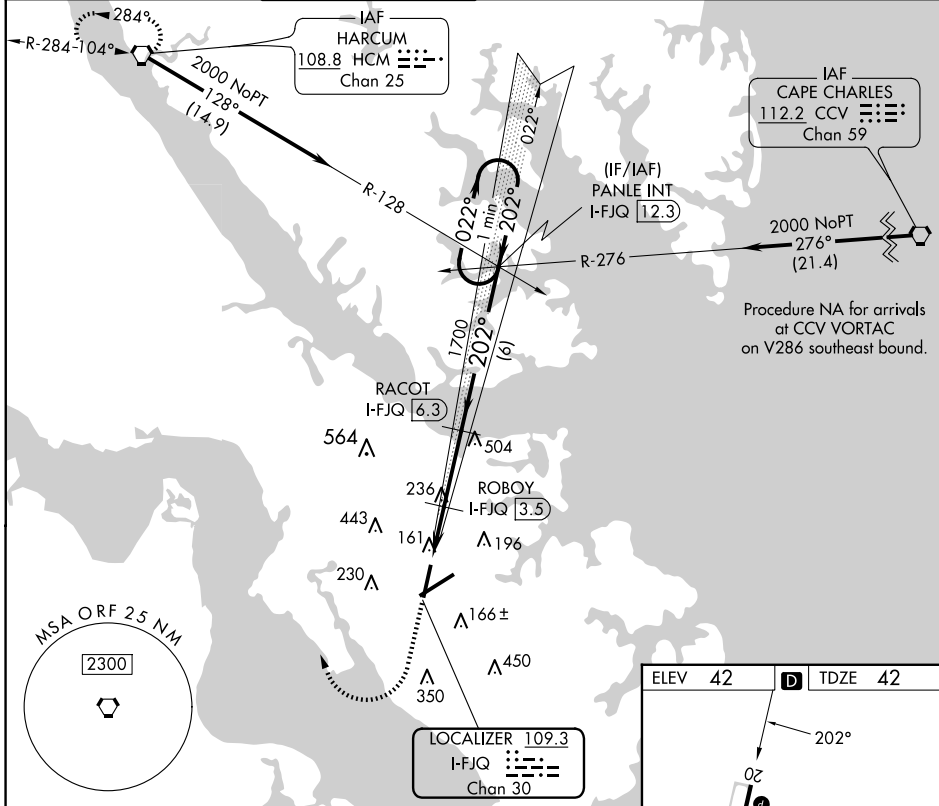


LOC/DME I-FJQ	APP CRS	Rwy Idg	6526
109.3	202°	TDZE	42
Chan 30		Apt Elev	42

LOC RWY 20

NEWPORT NEWS/WILLIAMSBURG INTL (PHF)

DME required.		Rwy 20 helicopter visibility reduction below 3/4 SM NA.		MISSED APPROACH: Climb to 2000 then right turn direct HCM VORTAC and hold.	
ATIS	NORFOLK APP CON	NEWPORT NEWS TOWER*	GND CON	CLNC DEL	UNICOM
128.65	125.7 335.625	118.7 (CTAF) 257.9	121.9 348.6	121.65 225.4	122.95



CATEGORY	A	B	C	D
S-20	420-1 378 (400-1)			
CIRCLING	520-1 478 (500-1)	540-1 498 (500-1)	760-2 718 (800-2)	780-2 1/4 738 (800-2 1/4)

REIL Rwy 20 and 25
HIRL Rwy 2-20 and 7-25

NE-3, 15 MAY 2025 to 12 JUN 2025

NE-3, 15 MAY 2025 to 12 JUN 2025