

APP CRS	Rwy Idg	7809
047°	TDZE	26
	Apt Elev	27

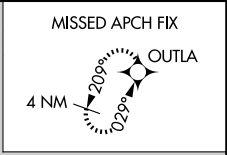
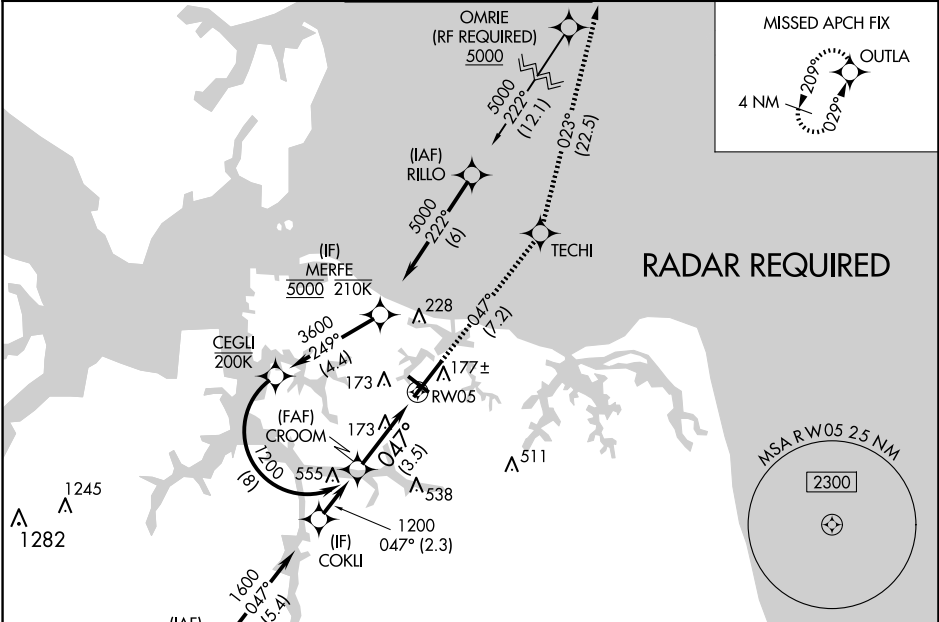
RNAV (RNP) Y RWY 5

NORFOLK INTL (O.R.F)

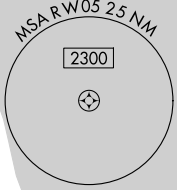
▼ For uncompensated Baro-VNAV systems, LNAV/VNAV NA below -9°C (16°F) or above 54°C (130°F). GPS required.

MALSR  MISSED APPROACH: Climb to 2000 on track 047° to TECHI and on track 023° to OUTLA and hold.

ATIS 127.15	NORFOLK APP CON 118.9 353.7	NORFOLK TOWER 120.8 257.8	GND CON 121.9	CLNC DEL 118.5
-----------------------	---------------------------------------	-------------------------------------	-------------------------	--------------------------



RADAR REQUIRED



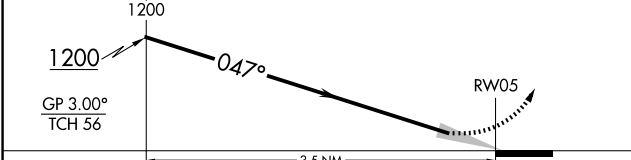
NE-3, 15 MAY 2025 to 12 JUN 2025

NE-3, 15 MAY 2025 to 12 JUN 2025

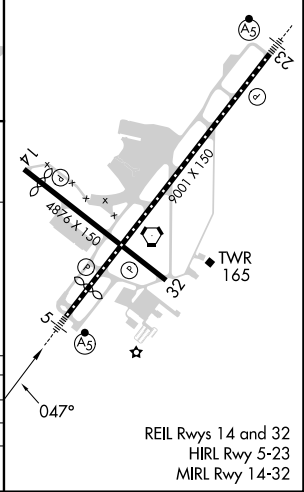


See planview for multiple IF locations.

2000	↑	tr	TECHI	tr	OUTLA
		047°		023°	



ELEV	27	D	TDZE	26
------	----	---	------	----



CATEGORY	A	B	C	D
RNP 0.10 DA		350/26	324 (400-½)	
RNP 0.30 DA		454/40	428 (500-¾)	

AUTHORIZATION REQUIRED