


WAAS CH <b>50222</b> <b>W05A</b>	APP CRS <b>047°</b>	Rwy Idg TDZE Apt Elev	<b>7809</b> <b>26</b> <b>27</b>
--	------------------------	-----------------------------	---------------------------------------

# RNAV (GPS) Z RWY 5

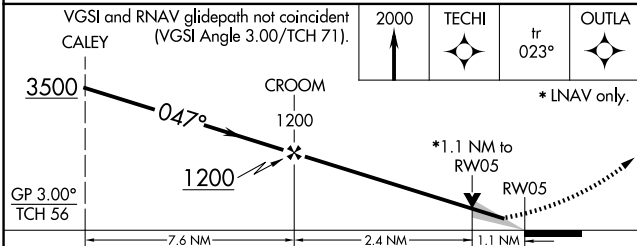
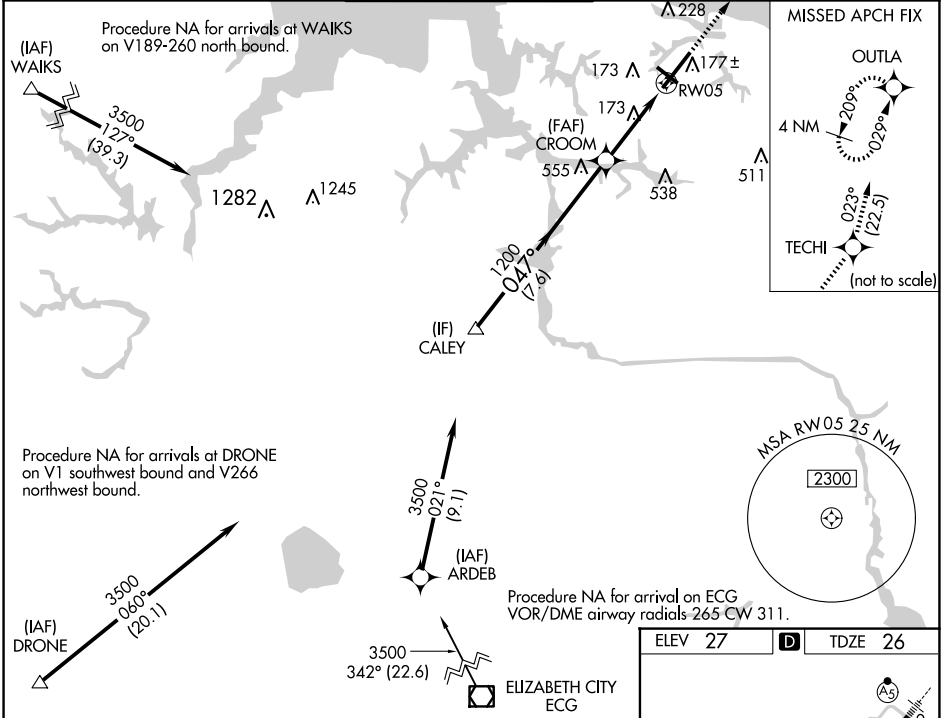
NORFOLK INTL (O.R.F.)

RNP APCH.

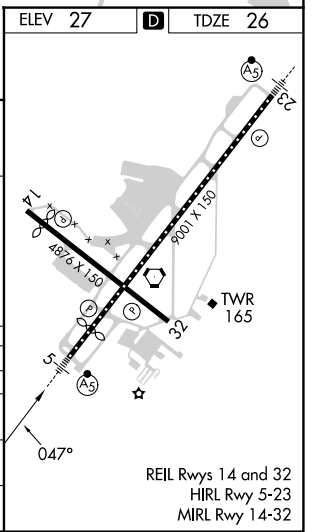
**⚠** For uncompensated Baro-VNAV systems, LNAV/VNAV NA below -9°C or above 54°C.  
**⚠** For inop ALS, increase LNAV/VNAV all Cats visibility to RVR 4500 and LNAV Cats C and D visibility to RVR 6000. \*\*RVR 1800 authorized with use of FD or AP or HUD to DA.

MALSR  MISSED APPROACH: Climb to 2000 direct TECHI then on track 023° to OUTLA and hold.

ATIS <b>127.15</b>	NORFOLK APP CON <b>118.9 353.7</b>	NORFOLK TOWER <b>120.8 257.8</b>	GND CON <b>121.9</b>	CLNC DEL <b>118.5</b>
-----------------------	---------------------------------------	-------------------------------------	-------------------------	--------------------------



CATEGORY	A	B	C	D
LPV DA**		226/24	200 (200-½)	
LNAV/VNAV DA		306/24	280 (300-½)	
LNAV MDA	440/24	414 (500-½)	440/40	414 (500-¾)
<b>C</b> CIRCLING	480-1 453 (500-1)	540-1 513 (600-1)	540-1½ 513 (600-1½)	900-2¾ 873 (900-2¾)



NE-3, 15 MAY 2025 to 12 JUN 2025

NE-3, 15 MAY 2025 to 12 JUN 2025