

KISRR THREE DEPARTURE

ATIS 127.15
CLNC DEL
118.5
GND CON
121.9
NORFOLK TOWER
120.8 257.8
NORFOLK DEP CON
125.2 363.125 379.1

**TOP ALTITUDE:
4000**

SALISBURY
111.2 SBY
Chan 49

SNOW HILL
112.4 SWL
Chan 71

FLAT ROCK
113.3 FAK
Chan 80

HARCUM
108.8 HCM
Chan 25

DUNFE

HOPEWELL
114.35 HPW
Chan 90 (Y)

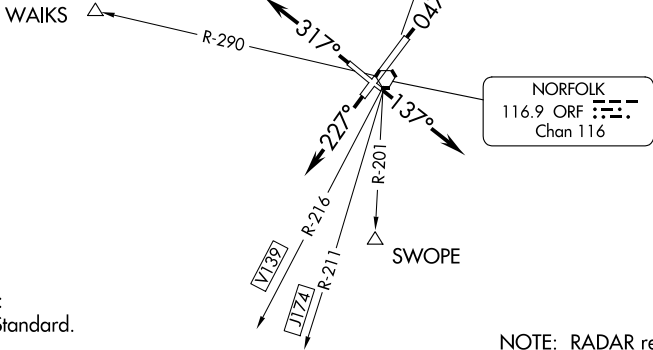
CAPE CHARLES
112.2 CCV
Chan 59

SCHOL

WAIKS

NORFOLK
116.9 ORF
Chan 116

SWOPE



TAKEOFF MINIMUMS:
Rwys 5, 14, 23, 32: Standard.

NOTE: RADAR required.
NOTE: Chart not to scale.

NE-3, 15 MAY 2025 to 12 JUN 2025

NE-3, 15 MAY 2025 to 12 JUN 2025

DEPARTURE ROUTE DESCRIPTION

- TAKEOFF RWY 5:** Climb heading 047°. Expect radar vectors to assigned departure route/fix. Thence . . .
- TAKEOFF RWY 14:** Climb heading 137°. Expect radar vectors to assigned departure route/fix. Thence . . .
- TAKEOFF RWY 23:** Climb heading 227°. Expect radar vectors to assigned departure route/fix. Thence . . .
- TAKEOFF RWY 32:** Climb heading 317°. Expect radar vectors to assigned departure route/fix. Thence . . .

. . . maintain 4000 feet, expect clearance to requested altitude 10 minutes after departure.

KISRR THREE DEPARTURE