

# JJIMS TWO ARRIVAL (RNAV)

PHILADELPHIA, PENNSYLVANIA

NE-4, 07 DEC 2017 to 04 JAN 2018

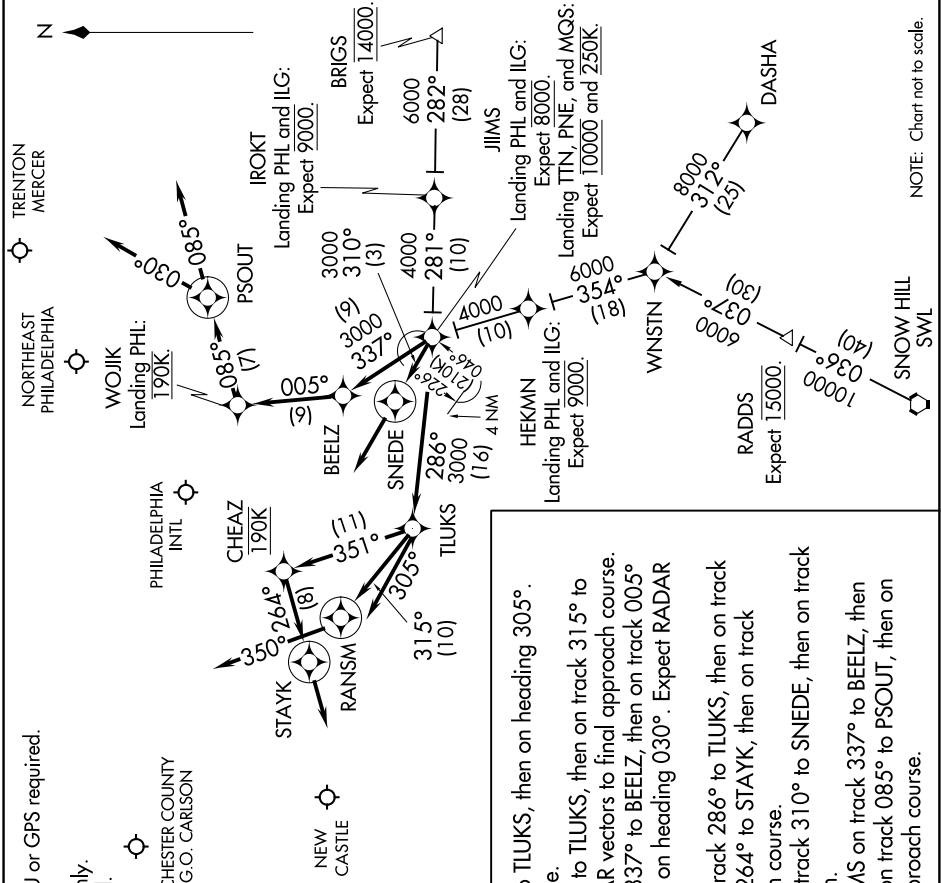
- NOTE: DME/DME/IRU or GPS required.
- NOTE: RNAV 1.
- NOTE: For turbojets only.
- NOTE: Radar required.

PHILADELPHIA INTL  
 D-ATIS ARR 133.4  
 NORTHEAST PHILADELPHIA  
 ATIS 121.15  
 TRENTON MERCER  
 ATIS 126.775  
 NEW CASTLE ATIS 123.95  
 CHESTER COUNTY G.O. CARLSON  
 AWOS-3 126.25  
 PHILADELPHIA APP CON  
 133.875 317.55

### ARRIVAL ROUTE DESCRIPTION

- BRIGS TRANSITION (BRIGS.JJIMS2):
- DASHA TRANSITION (DASHA.JJIMS2):
- SNOW HILL TRANSITION (SWL.JJIMS2):

Landing ILG: From over JJIMS on track 286° to TLUKS, then on heading 305°. Expect RADAR vectors to final approach course.  
 Landing MGS: From over JJIMS on track 286° to TLUKS, then on track 315° to RANSW, then on heading 350°. Expect RADAR vectors to final approach course.  
 Landing PNE, TTN: From over JJIMS on track 337° to BEELZ, then on track 005° to WOJJK, then on track 085° to PSOUT, then on heading 030°. Expect RADAR vectors to final approach course.  
 Landing PHL Rwy 9L, 9R: From over JJIMS on track 286° to TLUKS, then on track 351° to cross CHEAZ at 190K, then on track 264° to STAYK, then on track 264°. Expect RADAR vectors to final approach course.  
 Landing PHL Rwy 17, 35: From over JJIMS on track 310° to SNEDE, then on track 310°. Expect RADAR vectors to final approach.  
 Landing PHL Rwy 26, 27L, 27R: From over JJIMS on track 337° to BEELZ, then on track 005° to cross WOJJK at 190K, then on track 085° to PSOUT, then on track 085°. Expect RADAR vectors to final approach course.



NE-4, 07 DEC 2017 to 04 JAN 2018

# JJIMS TWO ARRIVAL (RNAV)

PHILADELPHIA, PENNSYLVANIA