

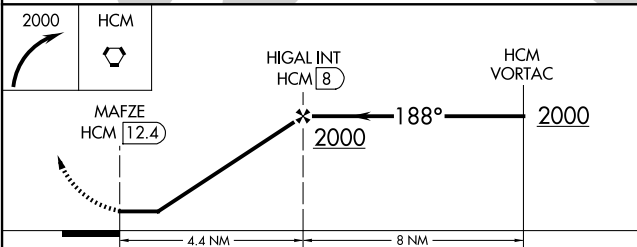
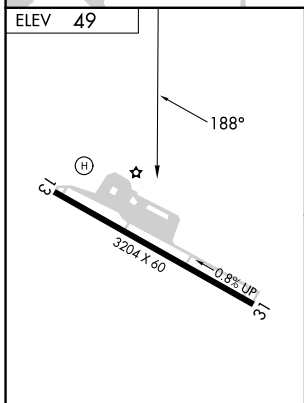
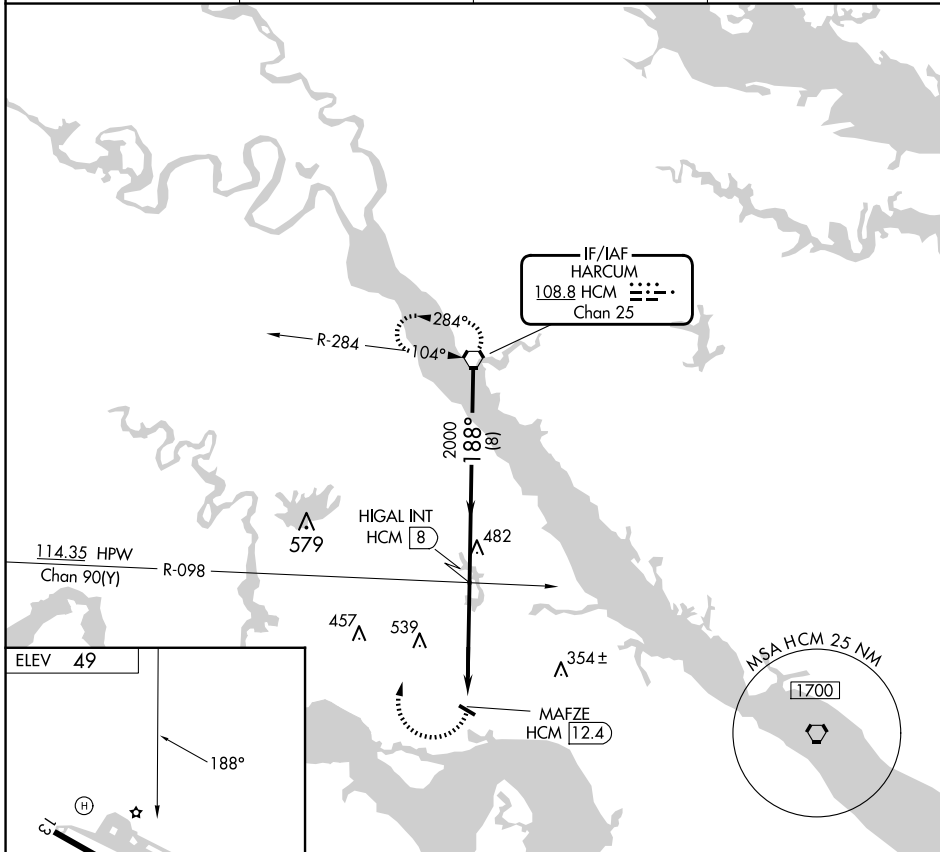
VORTAC HCM 108.8 Chan 25	APP CRS 188°	Rwy Ldg TDZE Apt Elev 49	N/A N/A 49
---------------------------------------	------------------------	---------------------------------------	-------------------------

VOR-B

WALTRIP WILLIAMSBURG EXEC AIRPORT (JGG)

▼ ▲	Procedure NA at night. Rwy 13, 31 helicopter visibility reduction below 1 SM NA.	MISSED APPROACH: Climbing right turn to 2000 direct HCM VORTAC and hold.
----------------------	---	--

AWOS-3 120.625	NORFOLK APP CON 119.45 360.6	GCO 135.075	UNICOM 122.8 (CTAF) 0
--------------------------	--	-----------------------	--



REIL Rwys 13 and 31 0						
MIRL Rwy 13-31 0						
FAF to MAP 4.4 NM						
Knots	60	90	120	150	180	
Min:Sec	4:24	2:56	2:12	1:46	1:28	
CATEGORY	A		B		C	D
☑ CIRCLING	1060-3		1011 (1100-3)		NA	

VOR-B

NE-3, 07 AUG 2025 to 04 SEP 2025

NE-3, 07 AUG 2025 to 04 SEP 2025