

LOC/DME I-JFZ 109.75 Chan 34 (Y)	APP CRS 252°	Rwy Idg TDZE Apt Elev	4299 2653 2653
---	------------------------	-----------------------------	---

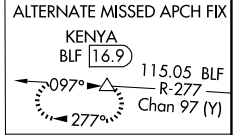
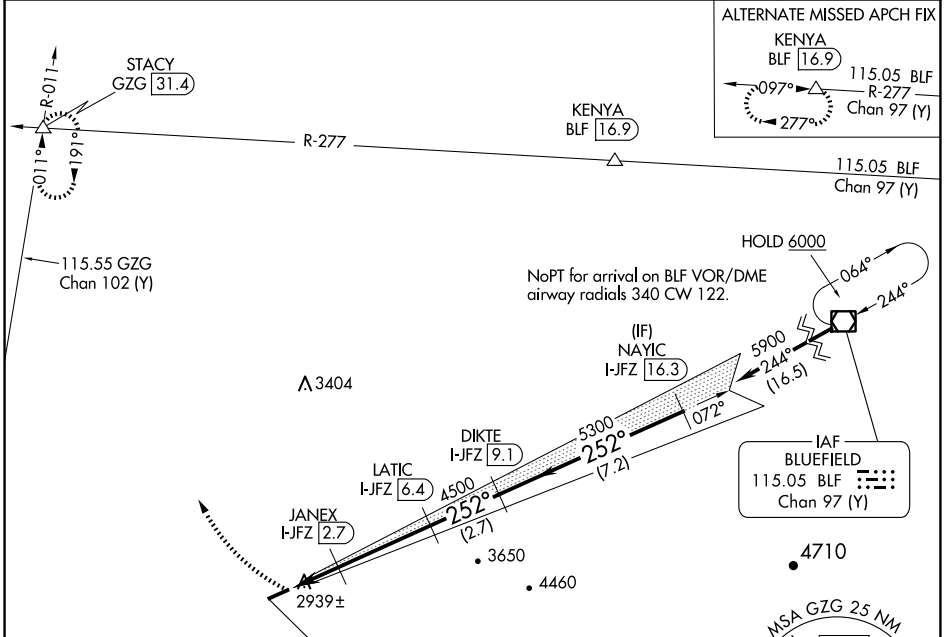
LOC/DME RWY 25

TAZEWELL COUNTY (JF'Z)

⚠ Visibility reduction by helicopters NA. When local altimeter setting not received use Wise altimeter setting and increase all MDA 100 feet, increase S-25 Cat C visibility 1/4 mile and Circling Cat C visibility 3/8 mile. When VGSI inop, Straight-in/Circling Rwy 25 NA at night. When VGSI inop, Circling Rwy 7 NA at night. Circling NA for Cat C south of Rwy 7-25.

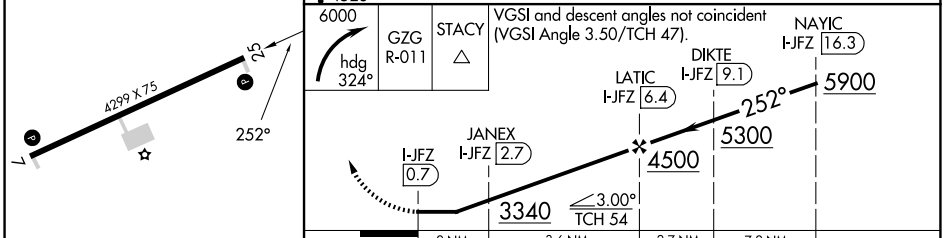
MISSED APPROACH: Climbing right turn to 6000 on heading 324° and GZG R-011 to STACY INT/GZG 31.4 DME and hold.

AWOS-3 118.075	ATLANTA CENTER 127.85 269.3	GCO 135.075	UNICOM 123.05 (CTAF) 0
--------------------------	---------------------------------------	-----------------------	----------------------------------

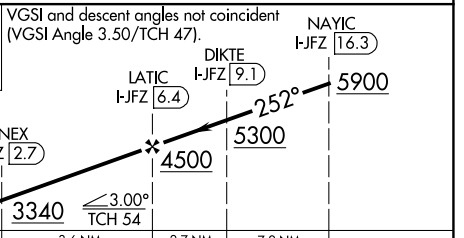


ELEV 2653	TDZE 2653
-----------	-----------

LOCALIZER 109.75
I-JFZ [109.75]
Chan 34 (Y)



4528
6000
GZG R-011
STACY
VGSI and descent angles not coincident (VGSI Angle 3.50/TCH 47).



CATEGORY	A	B	C	D
S-25	3200-1	547 (600-1)	3200-1 1/2 547 (600-1 1/2)	NA
C CIRCLING	3240-1	587 (600-1)	3240-1 1/2 587 (600-1 1/2)	NA

NE-3, 15 MAY 2025 to 12 JUN 2025

NE-3, 15 MAY 2025 to 12 JUN 2025