


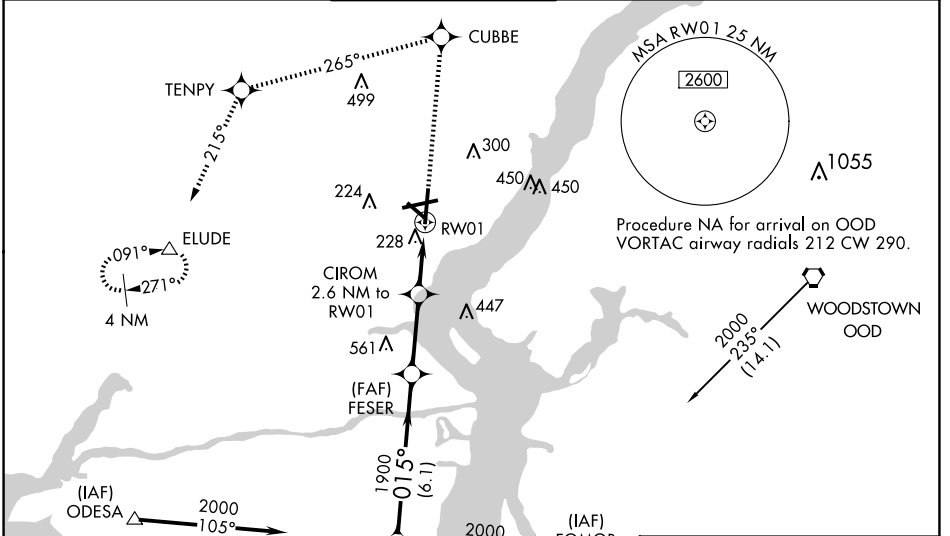
| | | |
|--|------------------------|---|
| WAAS CH 65815 W01A | APP CRS 015° | Rwy Idg 7012 TDZE 76 Apt Elev 80 |
|--|------------------------|---|

RNAV (GPS) RWY 1 NEW CASTLE (ILG)

⚠ Inoperative table does not apply to LPV all Cats and LNAV Cats A and B.
⚠ Baro-VNAV NA when using Philadelphia Intl altimeter setting. For uncompensated Baro-VNAV systems, LNAV/VNAV NA below -15°C (5°F) or above 49°C (120°F). DME/DME RNP-0.3 NA. Visibility reduction by helicopters NA. When local altimeter setting not received, use Philadelphia Intl altimeter setting: increase LPV DA to 380, LNAV/VNAV DA to 579, and all MDAs 60 feet; increase LNAV/VNAV all Cats visibility to RVR 6000 and Circling Cat D visibility ¼ SM. For inoperative MALSR, increase LNAV Cats C and D visibility ¼ mile. For inoperative MALSR, when using Philadelphia Intl altimeter setting, increase LNAV visibility Cat C ¼ mile.

MALSR
 MISSED APPROACH: Climb to 2000 direct CUBBE and left turn via track 265° to TENPY and via track 214° to ELUDE and hold.

| | | | | | |
|-----------------------|---|--|-------------------------------|---------------------------|-------------------------|
| ATIS 123.95 | PHILADELPHIA APP CON 118.35 323.1 | WILMINGTON TOWER* 126.0 (CTAF) 352.05 | GND CON 121.7 275.8 | CLNC DEL 119.95 | UNICOM 122.95 |
|-----------------------|---|--|-------------------------------|---------------------------|-------------------------|

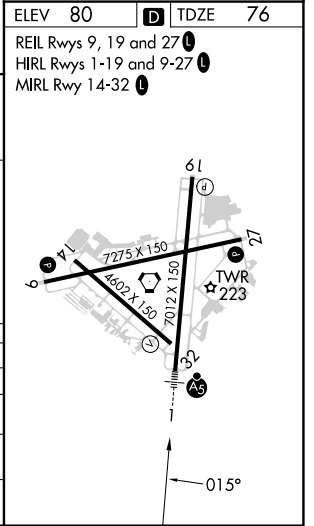
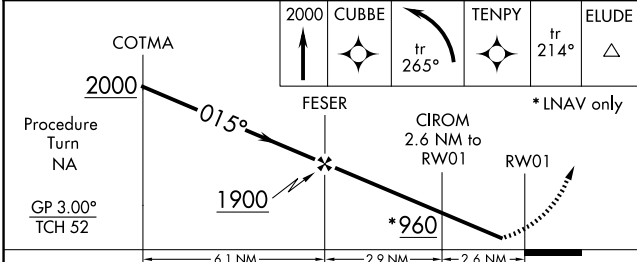


NE-3, 15 MAY 2025 to 12 JUN 2025

NE-3, 15 MAY 2025 to 12 JUN 2025

| | |
|----------------|-------------------------|
| ELEV 80 | D TDZE 76 |
|----------------|-------------------------|

REIL Rwy 9, 19 and 27
 HIRL Rwy 1-19 and 9-27
 MRL Rwy 14-32



| CATEGORY | A | B | C | D |
|--------------|----------------------|----------------------|------------------------|------------------------|
| LPV DA | | 326/50 | 250 (300-1) | |
| LNAV/VNAV DA | | 525/50 | 449 (500-1) | |
| LNAV MDA | | 480/50 | 404 (400-1) | |
| CIRCLING | 540-1 460 (500-1) | 560-1 480 (500-1) | 600-1½ 520 (600-1½) | 800-2¼ 720 (800-2¼) |