

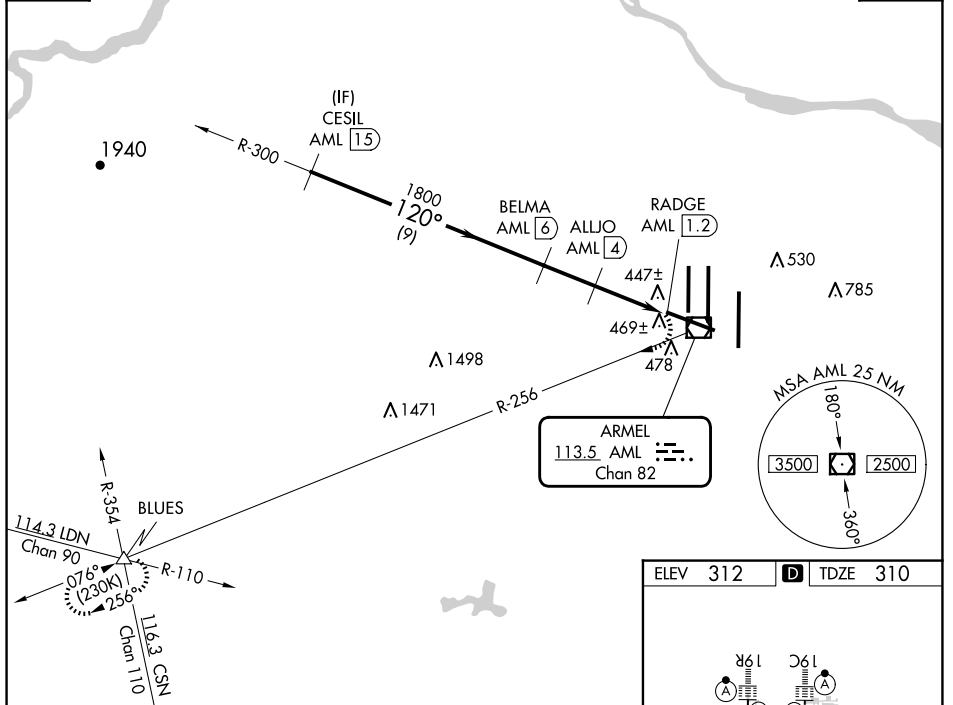
VOR/DME AML 113.5 Chan 82	APP CRS 120°	Rwy Idg TDZE Apt Elev	10501 310 312
---	------------------------	-----------------------------	--

VOR/DME RWY 12

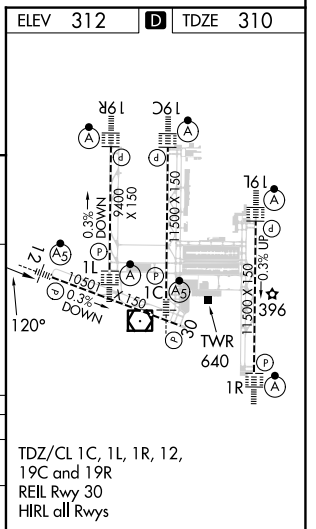
WASHINGTON DULLES INTL (IAD)

 120.45 306.925 (241°-330°) 128.525 306.925 (091°-240°) 126.1 338.25 (331°-090°)	DULLES TOWER 120.1 317.8 (Rwy 1R/19L) 120.25 348.6 (Rwy 1C/19C) 134.425 348.6 (Rwys 1L/19R and 12/30)	GND CON 121.9 317.8 (EAST) 121.625 348.6 (WEST)	CLNC DEL 135.7 317.8
		MISSED APPROACH: Climbing right turn to 4000 on AML VOR/DME R-256 to BLUES INT and hold.	

D-ATIS 134.85	RADAR REQUIRED	CPDLC
-------------------------	-----------------------	-------



	CESIL AML (15)	BELMA AML (6)	ALLJO AML (4)	AML (2.4)	RADGE AML (1.2)	4000	AML R-256	BLUES
	1800		1200		120°			
	9 NM		2 NM		1.7 NM		1.2	
CATEGORY	A	B	C	D				
S-12	740/24	430 (500-½)	740/40	430 (500-¾)				
CIRCLING	940-1	628 (700-1)	940-1¾ 628 (700-1¾)	1180-2¾ 868 (900-2¾)				



NE-3, 07 AUG 2025 to 04 SEP 2025

NE-3, 07 AUG 2025 to 04 SEP 2025