

LOC/DME I-OIU 110.75 Chan 44 (Y)	APP CRS 011°	Rwy ldg 9400 TDZE 296 Apt Elev 312
--	------------------------	--

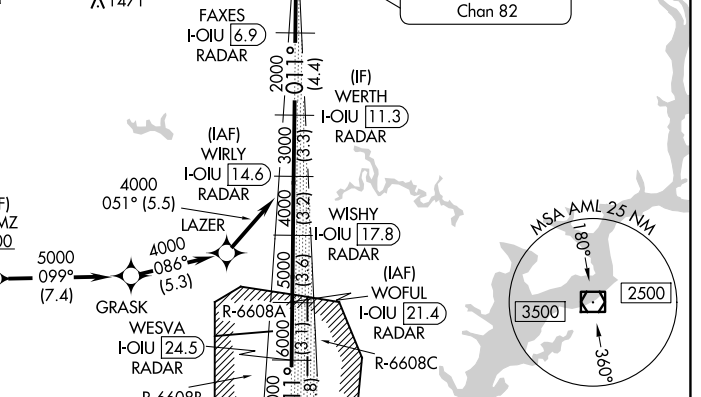
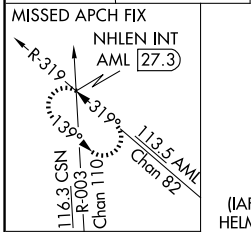
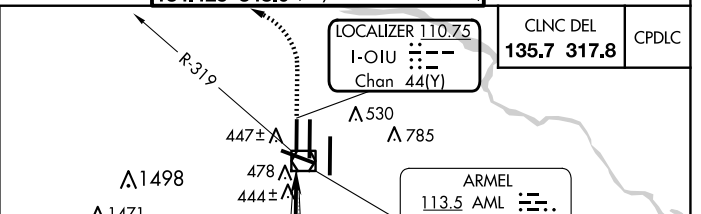
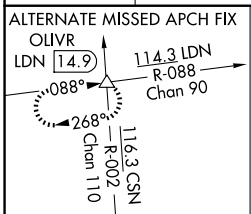
ILS RWY 1L (CAT II & III)

WASHINGTON DULLES INTL (IAD)

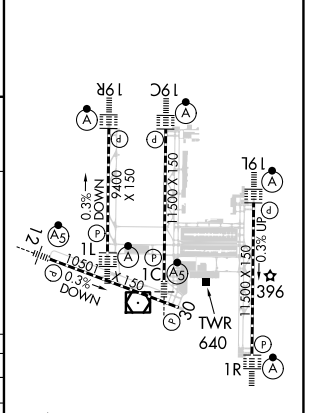
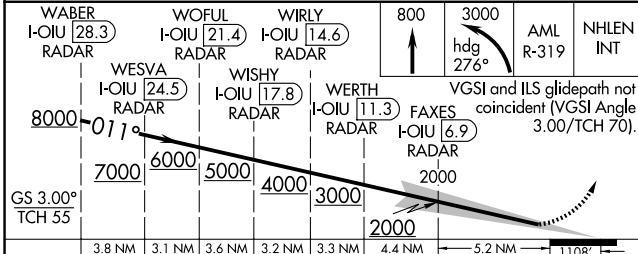
RNP APCH - GPS. From HELMZ.
DME or RADAR required.
RADAR required for procedure entry at WABER.
Simultaneous approach authorized.

ALSIF-2
MISSED APPROACH: Climb to 800 then climbing left turn to 3000 on heading 276° and on AML VOR/DME R-319 to NHLEN INT/AML 27.3 DME and hold.

D-ATIS 134.85	POTOMAC APP CON 120.45 306.925 (241°-330°) 128.525 306.925 (091°-240°) 126.1 338.25 (331°-090°)	DULLES TOWER 120.1 317.8 (Rwy 1R/19L) 120.25 348.6 (Rwy 1C/19C) 134.425 348.6 (Rwys 1L/19R and 12/30)	GND CON 121.9 317.8 (EAST) 121.625 348.6 (WEST)
-------------------------	---	---	---



ELEV 312	TDZE 296
----------	----------



CATEGORY	A	B	C	D
S-ILS 1L	CAT II RA 97/12 100 DA 396			
S-ILS 1L	CAT III RVR 06			

CATEGORY II & III ILS - SPECIAL AIRCREW & AIRCRAFT CERTIFICATION REQUIRED

TDZ/CL Rwys 1C, 1L, 1R, 12, 19C and 19R
REIL Rwy 30
HIRL all Rwys

NE-3, 15 MAY 2025 to 12 JUN 2025

NE-3, 15 MAY 2025 to 12 JUN 2025