

LOC/DME I-HAD <b>110.1</b> Chan 38	APP CRS <b>011°</b>	Rwy ldg <b>11500</b> TDZE <b>312</b> Apt Elev <b>312</b>
--	------------------------	--

# ILS or LOC RWY 1R

WASHINGTON DULLES INTL (IAD)

RNP APCH-GPS. From HELMZ, or HUFFF.

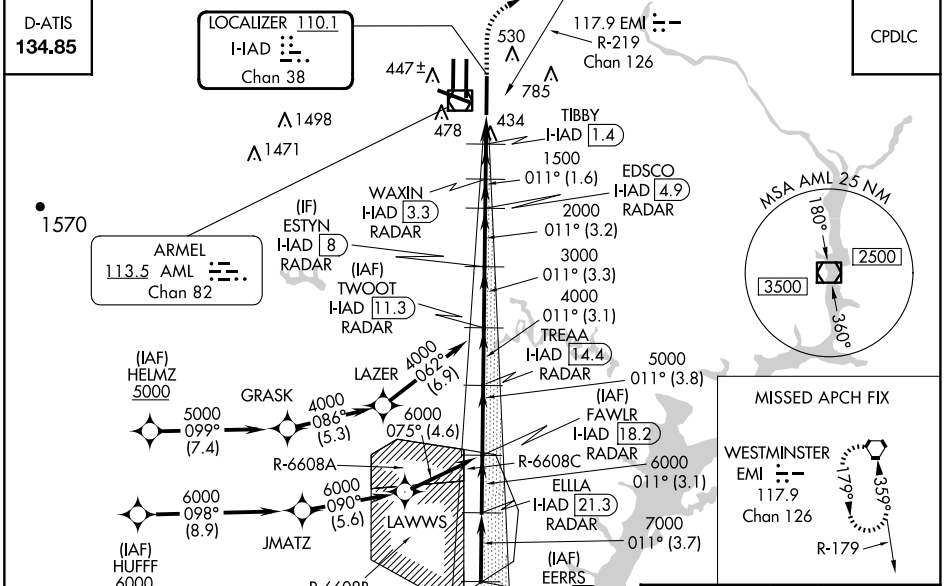
DME or RADAR required. DME required for LOC only. RADAR required for procedure entry at EERRS.

ALSF-2

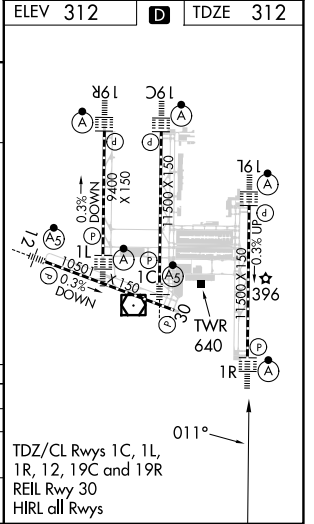
MISSED APPROACH: Climb to 800 then climbing right turn to 3000 on heading 060° and EMI VORTAC R-219 to EMI VORTAC and hold.

Simultaneous approach authorized.

POTOMAC APP CON <b>120.45 306.925</b> (241°-330°) <b>128.525 306.925</b> (091°-240°) <b>126.1 338.25</b> (331°-090°)	DULLES TOWER <b>120.1 317.8</b> (Rwy 1R/19L) <b>120.25 348.6</b> (Rwy 1C/19C) <b>134.425 348.6</b> (Rwys 1L/19R and 12/30)	GND CON <b>121.9 317.8</b> (EAST) <b>121.625 348.6</b> (WEST)	CLNC DEL <b>135.7 317.8</b>
---	---	---	--------------------------------



VGSI and ILS glidepath not coincident (VGSI Angle 3.00/TCH 72).		800	3000	EMI
EERRS HAD 25 RADAR	ELLA HAD 21.3 RADAR	7000	7000	EMI R-219
FAWLR HAD 18.2 RADAR	TREA HAD 14.4 RADAR	6000	6000	
TWOOT HAD 11.3 RADAR	ESTYN HAD 8 RADAR	5000	5000	
EDSCO HAD 4.9 RADAR	WAXIN HAD 3.3 RADAR	4000	4000	
TIBBY HAD 1.4 RADAR		3000	3000	
DME ANT.		2000	2000	
		1500	900	
		3.7 NM	3.1 NM	3.8 NM
		3.1 NM	3.1 NM	3.3 NM
		3.2 NM	1.6 NM	1.9 NM
		0.7	0.8	0.2
CATEGORY	A	B		C
S-ILS 1R	512/18 200 (200-½)			
S-LOC 1R	700/24	388 (400-½)	700/35	388 (400-¾)
CIRCLING	940-1	628 (700-1)	940-1¾	628 (700-1¾)
			1180-2¾	868 (900-2¾)



NE-3, 15 MAY 2025 to 12 JUN 2025

NE-3, 15 MAY 2025 to 12 JUN 2025