

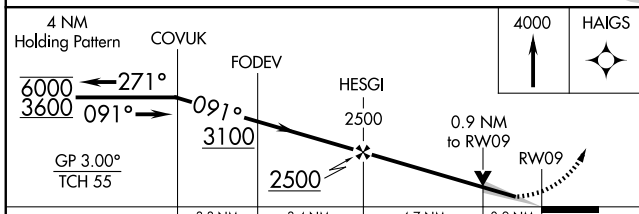
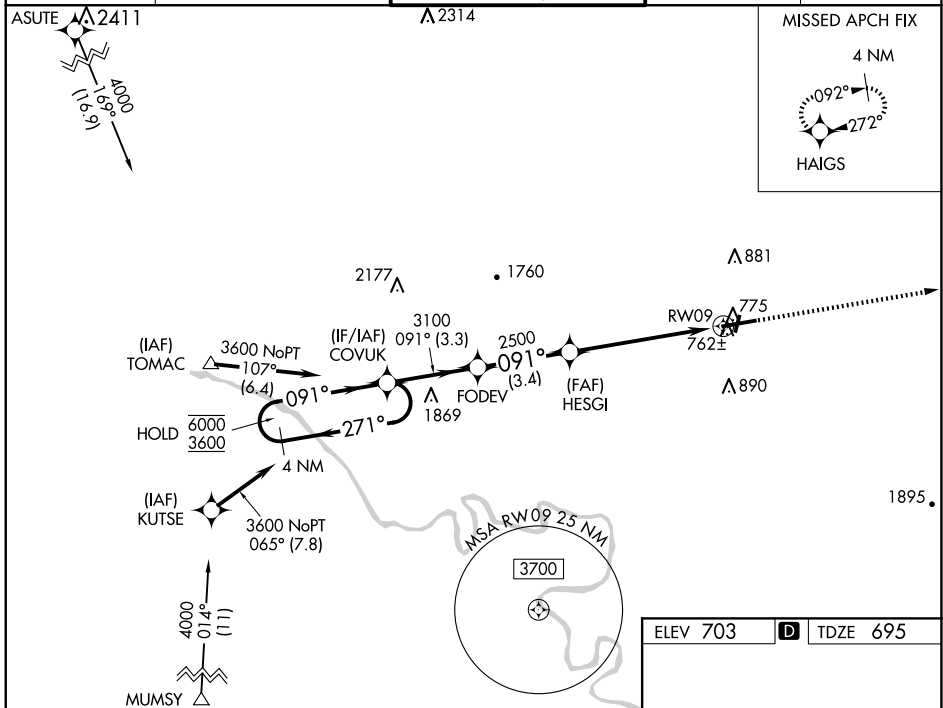
WAAS CH <b>49011</b> <b>W09A</b>	APP CRS <b>091°</b>	Rwy Idg TDZE Apt Elev	<b>7000</b> <b>695</b> <b>703</b>
--	------------------------	-----------------------------	---

# RNAV (GPS) RWY 9

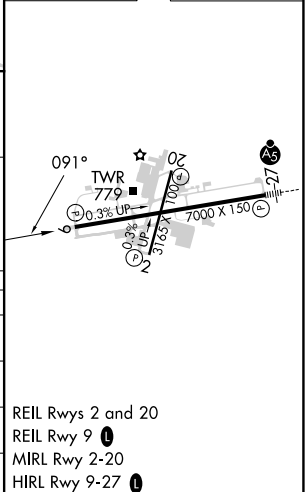
HAGERSTOWN RGNL/RICHARD A HENSON FLD (HGR)

RNP APCH - GPS.		MISSED APPROACH: Climb to 4000 direct HAIGS and hold.
For uncompensated Baro-VNAV systems, LNAV/VNAV NA below -12°C or above 54°C.		

ASOS <b>126.375</b>	POTOMAC APP CON <b>126.825 239.025</b>	HAGERSTOWN TOWER * <b>120.3 (CTAF) 225.4</b>	GND CON <b>120.8</b>	UNICOM <b>122.95</b>
------------------------	---	---	-------------------------	-------------------------



ELEV 703	<b>D</b>	TDZE 695
----------	----------	----------



CATEGORY	A	B	C	D
LPV DA		895- <sup>3</sup> / <sub>4</sub>	200 (200- <sup>3</sup> / <sub>4</sub> )	
LNAV/VNAV DA		945- <sup>3</sup> / <sub>4</sub>	250 (300- <sup>3</sup> / <sub>4</sub> )	
LNAV MDA		1020-1	325 (400-1)	
<b>C</b> CIRCLING	1160-1	457 (500-1)	1200-1 <sup>1</sup> / <sub>2</sub> 497 (500-1 <sup>1</sup> / <sub>2</sub> )	1300-2 597 (600-2)

REIL Rwy 2 and 20  
 REIL Rwy 9 **1**  
 MIRL Rwy 2-20  
 HIRL Rwy 9-27 **1**

# RNAV (GPS) RWY 9

NE-3, 15 MAY 2025 to 12 JUN 2025

NE-3, 15 MAY 2025 to 12 JUN 2025