

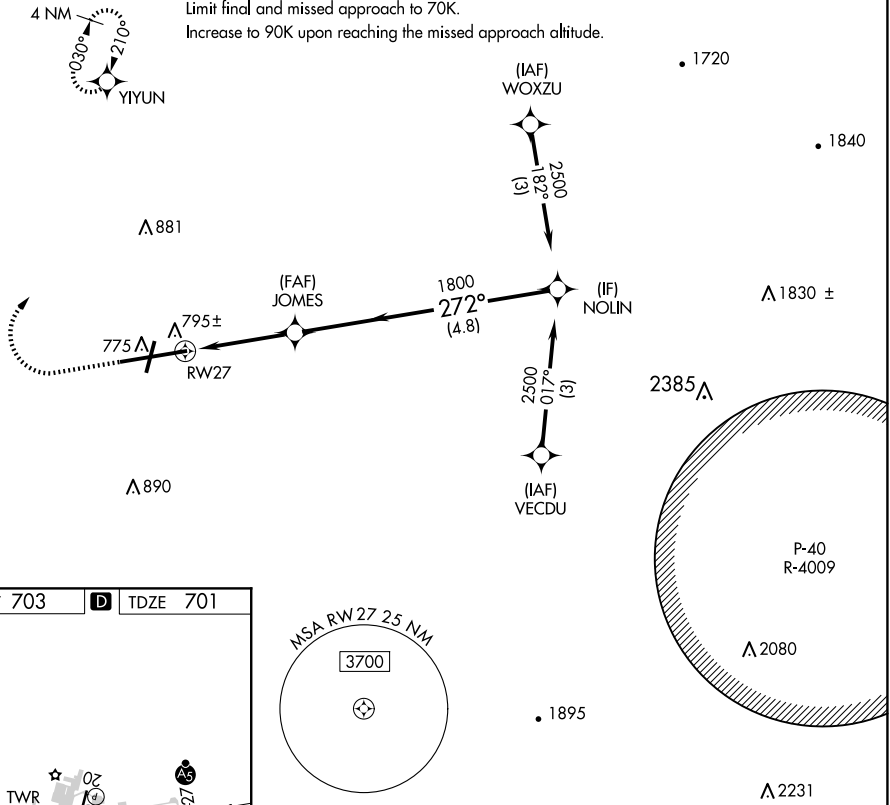
APP CRS	Rwy Idg	7000
272°	TDZE	701
	Apt Elev	703

COPTER RNAV (GPS) RWY 27

HAGERSTOWN RGNL/RICHARD A HENSON FLD (HGR)

<p>▼ Inop table does not apply. DME/DME RNP-0.3 NA. VDP NA with Martinsburg altimeter setting. When local altimeter setting not received, use Martinsburg altimeter setting and increase MDA 80 feet.</p>		<p>MALSRS</p>	<p>MISSED APPROACH: Climb to 1200 then climbing right turn to 2500 direct YIYUN and hold.</p>	
ASOS	POTOMAC APP CON	HAGERSTOWN TOWER ★	GND CON	UNICOM
126.375	126.825 239.025	120.3 (CTAF) 0 225.4	120.8	122.95

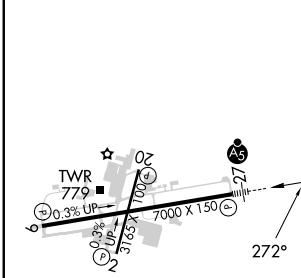
Limit initial and intermediate approach to 90K.
 Limit final and missed approach to 70K.
 Increase to 90K upon reaching the missed approach altitude.



NE-3, 07 AUG 2025 to 04 SEP 2025

NE-3, 07 AUG 2025 to 04 SEP 2025

ELEV 703	D	TDZE 701
----------	----------	----------



1200	2500	YIYUN	VGSI and descent angles not coincident (VGSI Angle 3.00/TCH 55).
<p>JOMES</p> <p>4.98° HCH 55</p>		<p>NOLIN</p> <p>2500</p>	
<p>1800</p> <p>1 NM to RW27</p>		<p>272°</p>	
<p>1 NM</p>		<p>4.8 NM</p>	
CATEGORY	COPTER		
LNAV MDA	1060-1/2 359 (400-1/2)		

REIL Rws 2 and 20
 REIL Rwy 9
 MIRL Rwy 2-20
 HIRL Rwy 9-27