

APP CRS	Rwy Idg	<b>7000</b>
<b>091°</b>	TDZE	<b>695</b>
	Apt Elev	<b>703</b>

# COPTER RNAV (GPS) RWY 9

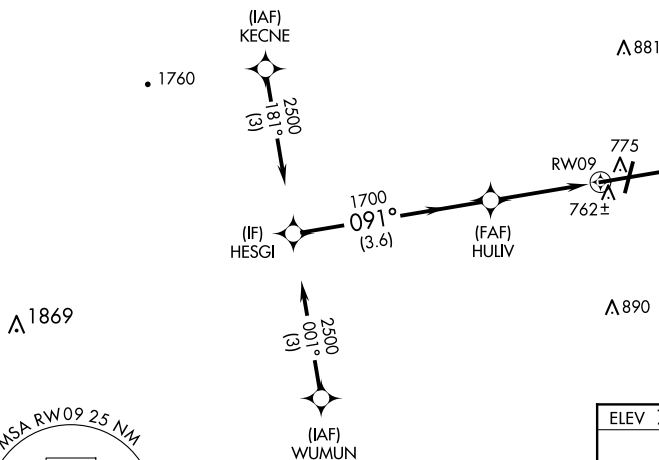
HAGERSTOWN RGNL/RICHARD A HENSON FLD (HGR)

**▼** DME/DME RNP-0.3 NA. VDP NA with Martinsburg altimeter setting. When local altimeter setting not received, use Martinsburg altimeter setting and increase MDA 80 feet.

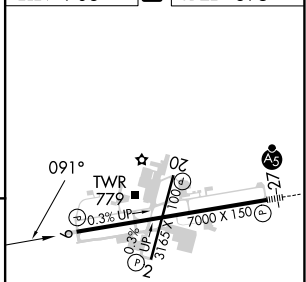
**MISSED APPROACH:** Climb to 1200 then climbing left turn to 2500 direct YIYUN and hold.

ASOS <b>126.375</b>	POTOMAC APP CON <b>126.825 239.025</b>	HAGERSTOWN TOWER * <b>120.3 (CTAF) 0 225.4</b>	GND CON <b>120.8</b>	UNICOM <b>122.95</b>
------------------------	---	---	-------------------------	-------------------------

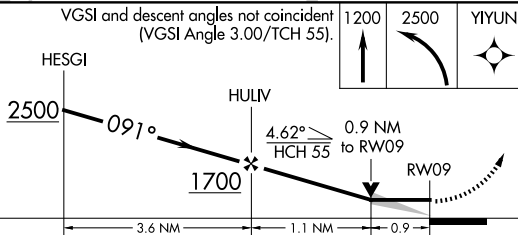
Limit initial and intermediate approach to 90K.  
Limit final and missed approach to 70K.  
Increase to 90K upon reaching the missed approach altitude.



ELEV 703	<b>D</b>	TDZE 695
----------	----------	----------



VGSI and descent angles not coincident (VGSI Angle 3.00/TCH 55).



REIL Rwy 2 and 20  
REIL Rwy 9 **1**  
MIRL Rwy 2-20  
HIRL Rwy 9-27 **1**

CATEGORY	COPTER	
LNAV MDA	1020-1/2	325 (400-1/2)