

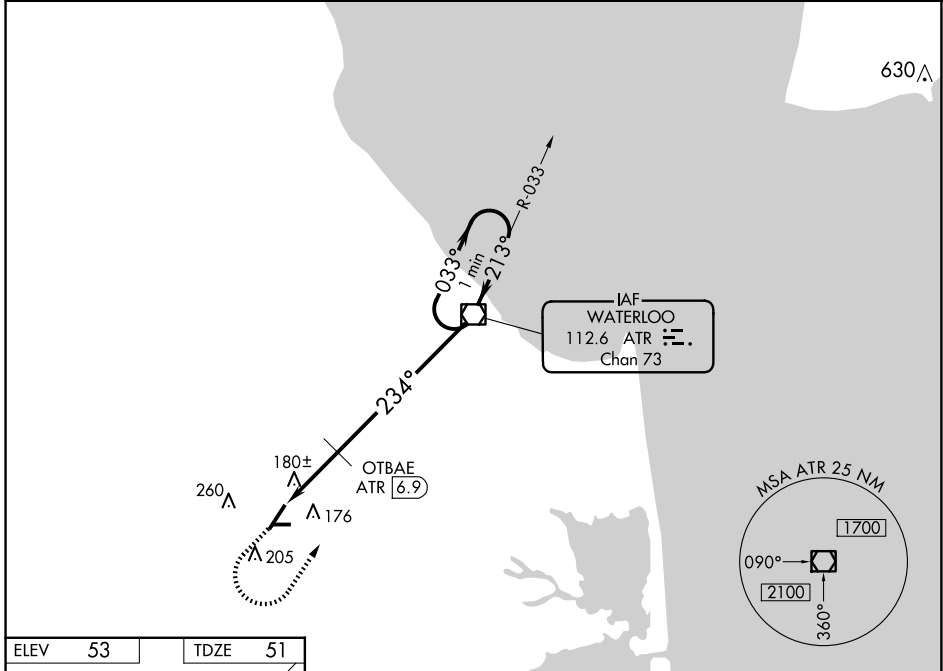
VOR/DME	ATR	APP CRS	Rwy ldg	5331
112.6		234°	TDZE	51
Chan 73			Apt Elev	53

VOR RWY 22
DELAWARE COASTAL (GED)

▼ Rwy 22 helicopter visibility reduction below 1 SM NA.
▲ Rwy 22 Straight-In and Circling minimums NA at night.

MISSED APPROACH: Climb to 800 then climbing left turn to 3000 direct ATR VOR/DME and hold.

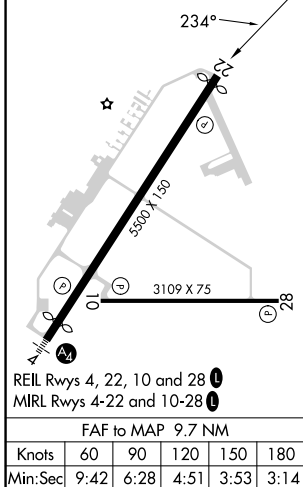
ASOS 118.375	DOVER APP CON 132.425 257.875	GCO 125.55	UNICOM 123.0 (CTAF) 0
------------------------	-----------------------------------------	----------------------	---------------------------------



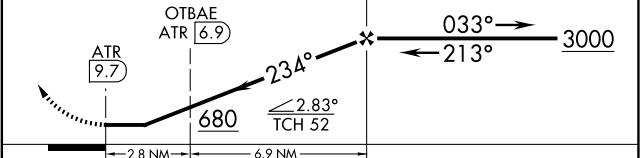
NE-3, 15 MAY 2025 to 12 JUN 2025

NE-3, 15 MAY 2025 to 12 JUN 2025

ELEV 53	TDZE 51
---------	---------



800 3000 ATR VGSI and descent angles not coincident (VGSI Angle 3.00/TCH 45).
 One Minute Holding Pattern



CATEGORY	A	B	C	D
S-22	680-1	629 (700-1)	680-1¾	629 (700-1¾)
C CIRCLING	680-1	627 (700-1)	720-1¾ 667 (700-1¾)	720-2 667 (700-2)
OTBAE FIX MINIMUMS				
S-22	440-1	389 (400-1)	440-1⅛	389 (400-1⅛)
C CIRCLING	560-1 507 (600-1)	580-1 527 (600-1)	720-1¾ 667 (700-1¾)	720-2 667 (700-2)