

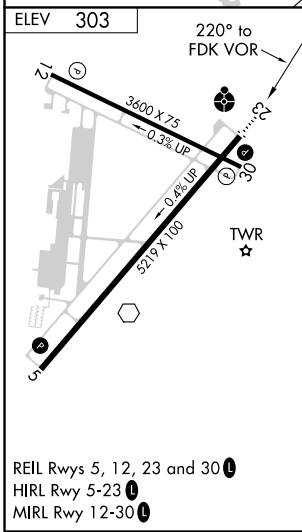
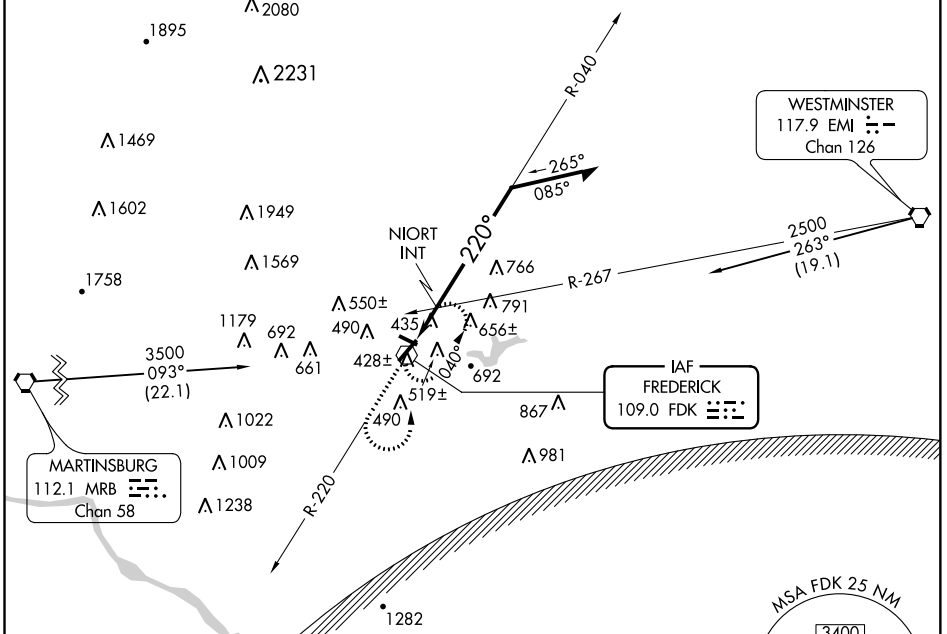
VOR FDK 109.0	APP CRS 220°	Rwy ldg TDZE Apt Elev	N/A N/A 303
-------------------------	------------------------	-----------------------------	--

VOR-A
FREDERICK MUNI (FDK)

NA Night Landing: Rwy 30 NA.
Helicopter visibility reduction below 1 SM NA.

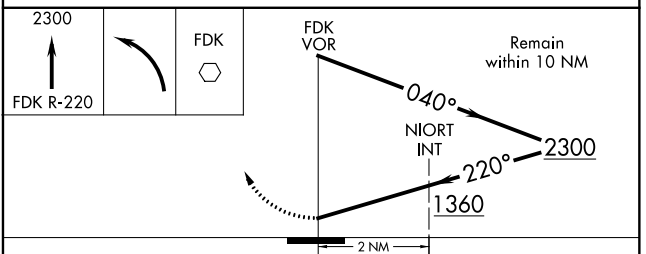
MISSED APPROACH: Climb to 2300 via FDK R-220 then left turn direct FDK VOR and hold.

ATIS 124.875	POTOMAC APP CON 125.525 291.625	FREDERICK TOWER ★ 132.4 (CTAF) 0	GND CON 121.975	CLNC DEL 121.975	POTOMAC CLNC DEL 126.9 (when tower closed)	UNICOM 122.95
------------------------	---	--	---------------------------	----------------------------	---	-------------------------



WASHINGTON DC METROPOLITAN SFRA

WARNING -- WASHINGTON DC SFRA.
CTC POTOMAC APP CON



CATEGORY	A	B	C	D
CIRCLING	1360-1¼ 1057 (1100-1¼)	1360-1½ 1057 (1100-1½)	1360-3	1057 (1100-3)
NIORT INT MINIMUMS				
CIRCLING	920-1	617 (700-1)	920-1¾ 617 (700-1¾)	1080-2½ 777 (800-2½)

NE-3, 04 JAN 2018 to 01 FEB 2018

NE-3, 04 JAN 2018 to 01 FEB 2018