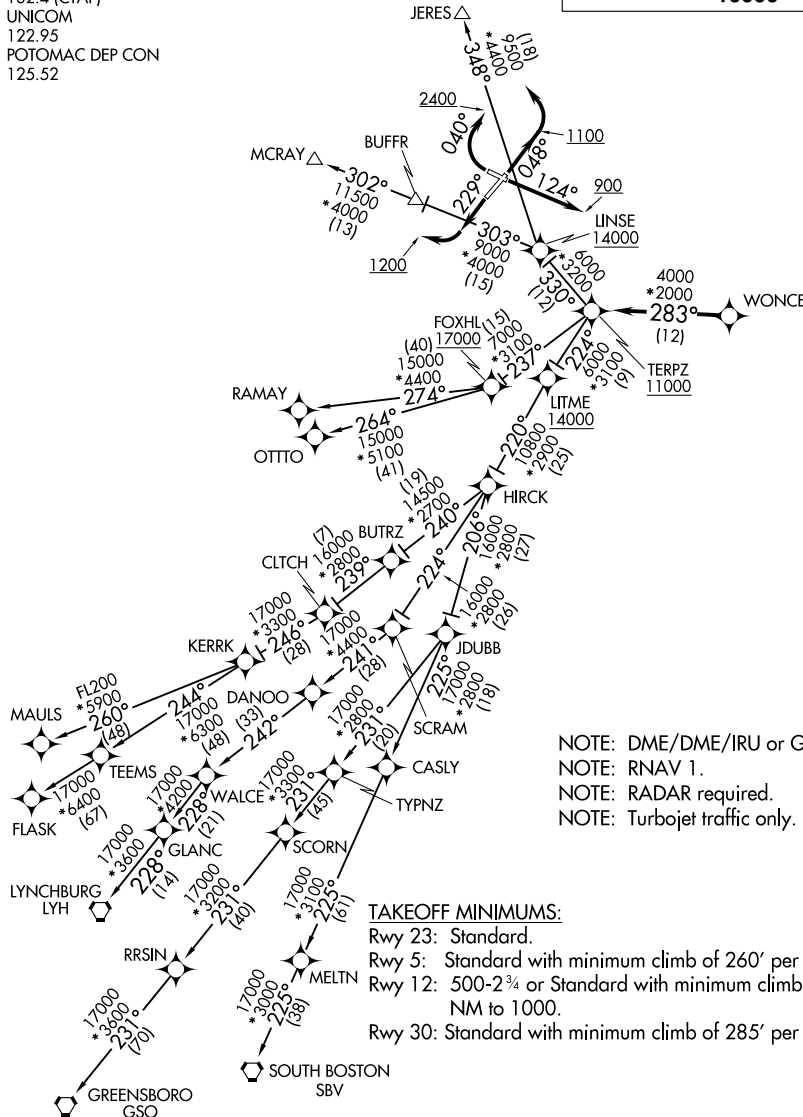


# TERPZ SIX DEPARTURE (RNAV)

FREDERICK, MARYLAND

ATIS  
 124.875  
 CLNC DEL  
 121.975  
 GND CON  
 121.975  
 FREDERICK TOWER\*  
 132.4 (CTAF)  
 UNICOM  
 122.95  
 POTOMAC DEP CON  
 125.52

**TOP ALTITUDE:**  
**RAMAY, OTTTO, MAULS, FLASK,**  
**SBV, LYH, GSO TRANSITIONS:**  
**17000**  
**JERES, MCRAY TRANSITIONS:**  
**16000**



NOTE: DME/DME/IRU or GPS required.  
 NOTE: RNAV 1.  
 NOTE: RADAR required.  
 NOTE: Turbojet traffic only.

### TAKEOFF MINIMUMS:

Rwy 23: Standard.  
 Rwy 5: Standard with minimum climb of 260' per NM to 1100.  
 Rwy 12: 500-2<sup>3</sup>/<sub>4</sub> or Standard with minimum climb of 395' per NM to 1000.  
 Rwy 30: Standard with minimum climb of 285' per NM to 900.

NOTE: Chart not to scale.

NE-3, 19 JUL 2018 to 16 AUG 2018

NE-3, 19 JUL 2018 to 16 AUG 2018

# TERPZ SIX DEPARTURE (RNAV)

(TERPZ6.TERPZ) 04FEB16

FREDERICK, MARYLAND  
FREDERICK MUNI (F'DK)