

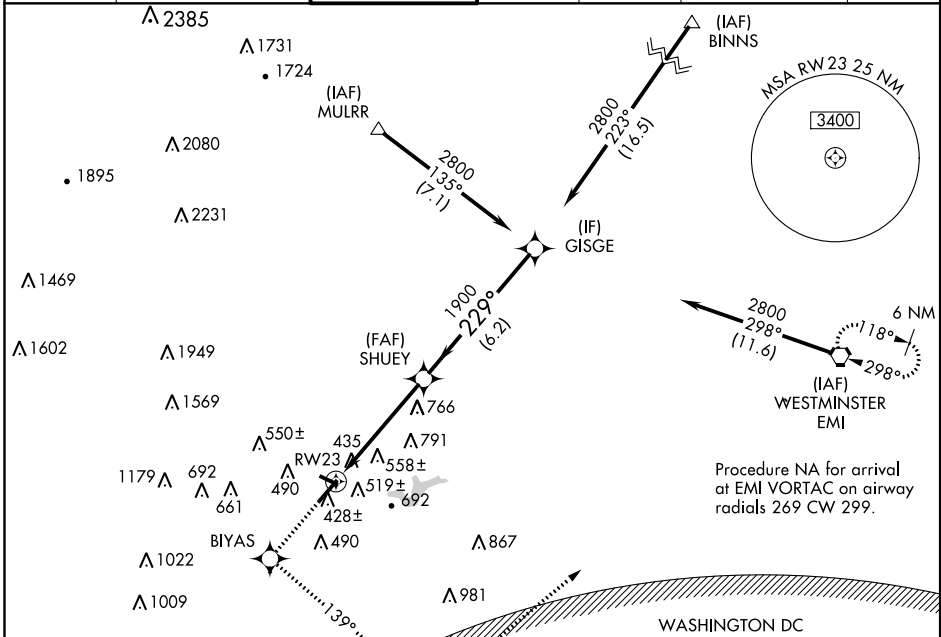
WAAS CH 81802 W23A	APP CRS 229°	Rwy Idg 5219 TDZE 296 Apt Elev 303
--	------------------------	---

RNAV (GPS) Z RWY 23

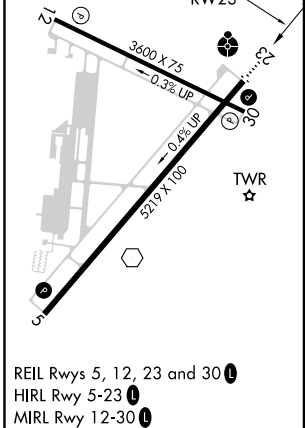
FREDERICK MUNI (F'DK)

<p>▼ DME/DME RNP-0.3 NA. Baro-VNAV NA below -15°C (5°F) or above 54°C (130°F). Night Landing: Rwy 30 NA. Inop table does not apply to LPV, LNAV/VNAV all Cats, and LNAV Cat C.</p>	<p>ODALS</p>	<p>MISSED APPROACH: Climb to 3000 direct BIYAS WP and via 139° track to FEDIT WP and via 059° track to EMI VORTAC and hold.</p>
---	--------------	---

ATIS 124.875	POTOMAC APP CON 125.525 291.625	FREDERICK TOWER ★ 132.4 (CTAF) 0	GND CON 121.975	CLNC DEL 121.975	POTOMAC CLNC DEL 126.9 (when tower closed)	UNICOM 122.95
------------------------	---	---	---------------------------	----------------------------	---	-------------------------

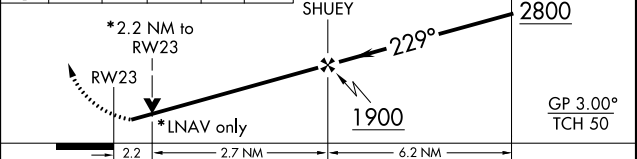


ELEV 303	TDZE 296
----------	----------



WARNING -- WASHINGTON DC SFRA.
CTC POTOMAC APP CON

3000	BIYAS	FEDIT	EMI	VGSI and RNAV glidepath not coincident (VGSI Angle 3.00/TCH 40).	Procedure Turn NA
	↑	tr 139°	tr 059°		



CATEGORY	A	B	C	D
LPV DA	690-1½ 394 (400-1½)			
LNAV/VNAV DA	1020-2½ 724 (800-2½)			
LNAV MDA	1020-¾ 724 (800-¾)	1020-2 724 (800-2)	1020-2¼ 724 (800-2¼)	1020-2½ 724 (800-2½)
C CIRCLING	1020-1 717 (800-1)	1080-2¼ 777 (800-2¼)	1160-2¾ 857 (900-2¾)	

NE-3, 29 MAR 2018 to 26 APR 2018

NE-3, 29 MAR 2018 to 26 APR 2018