

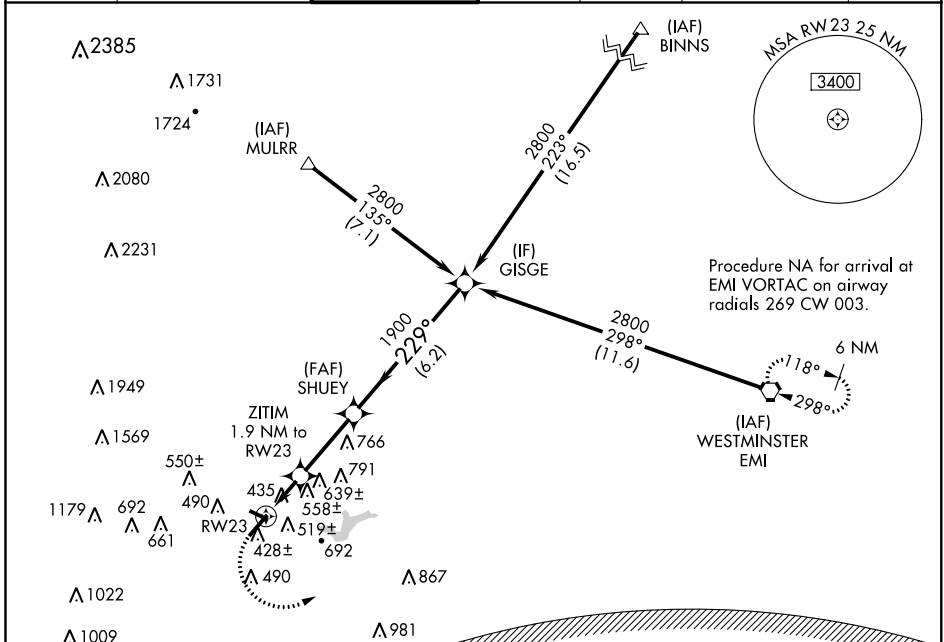
APP CRS	Rwy Idg	<b>5219</b>
<b>229°</b>	TDZE	<b>296</b>
	Apt Elev	<b>303</b>

# RNAV (GPS) Y RWY 23

FREDERICK MUNI (F'DK)

<p><b>▼</b> DME/DME RNP-0.3 NA.  <b>▲</b> Inoperative table does not apply to Cat C.                  Night Landing: Rwy 30 NA.</p>	<p><b>ODALS</b></p>	<p>MISSED APPROACH: Climbing left turn to 3000 direct EMI VORTAC and hold.</p>
---	---------------------	--

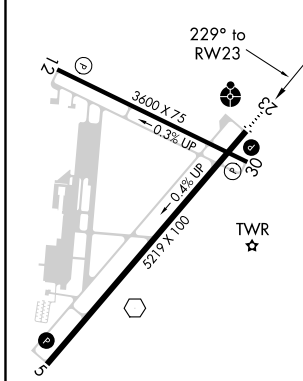
ATIS <b>124.875</b>	POTOMAC APP CON <b>125.525 291.625</b>	FREDERICK TOWER ★ <b>132.4 (CTAF) 0</b>	GND CON <b>121.975</b>	CLNC DEL <b>121.975</b>	POTOMAC CLNC DEL <b>126.9</b> (when tower closed)	UNICOM <b>122.95</b>
------------------------	---	--	---------------------------	----------------------------	---	-------------------------



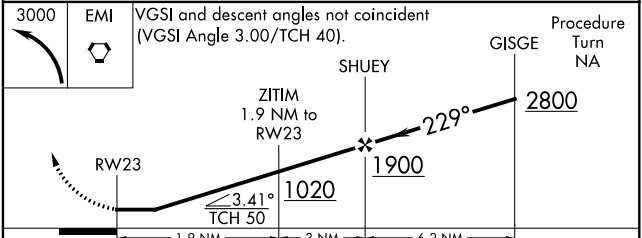
NE-3, 04 JAN 2018 to 01 FEB 2018

NE-3, 04 JAN 2018 to 01 FEB 2018

ELEV 303	TDZE 296
----------	----------



WASHINGTON DC METROPOLITAN SFRA  
**WARNING -- WASHINGTON DC SFRA. CTC POTOMAC APP CON**



CATEGORY	A	B	C	D
LNNAV MDA	820-3/4 524 (600-3/4)		820-1 1/2 524 (600-1 1/2)	820-1 3/4 524 (600-1 3/4)
CIRCLING	900-1 597 (600-1)		1080-2 1/4 777 (800-2 1/4)	1160-2 3/4 857 (900-2 3/4)

REIL Rws 5, 12, 23 and 30  
 HIRL Rwy 5-23  
 MIRL Rwy 12-30