

# RNAV (GPS) RWY 5

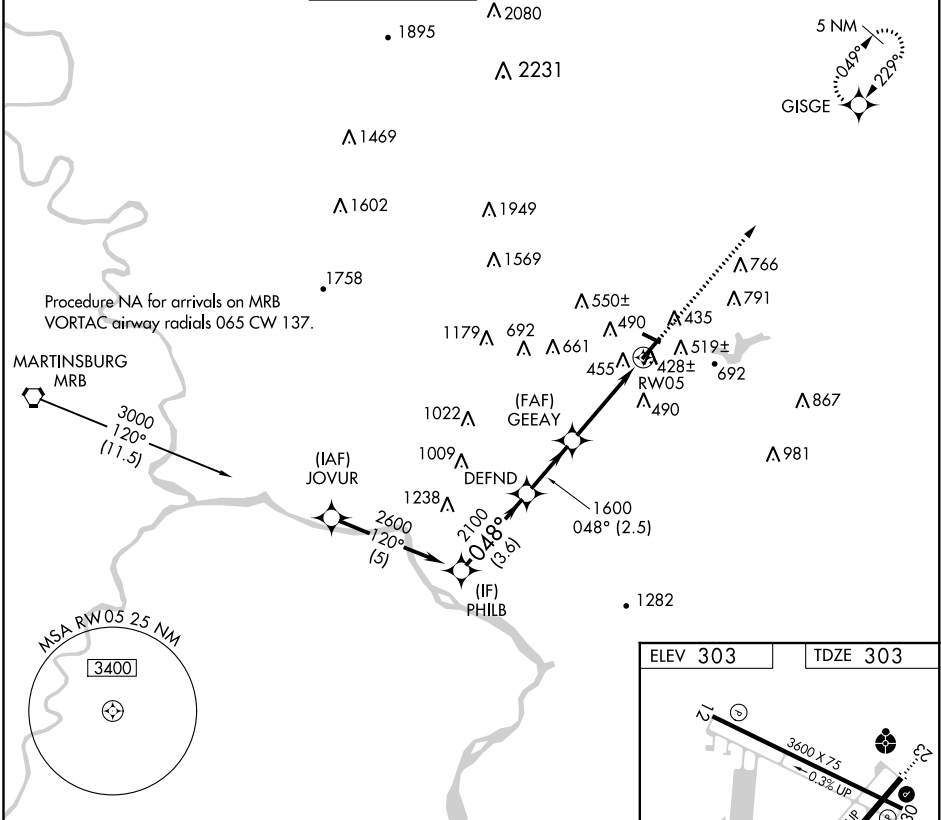
FREDERICK MUNI (F'DK)

APP CRS	Rwy ldg	<b>5219</b>
<b>048°</b>	TDZE	<b>303</b>
	Apt Elev	<b>303</b>

**▼** DME/DME RNP -0.3 NA. When local altimeter setting not received, use Leesburg altimeter setting and increase all MDA 80 feet; increase LNAV Cat D and Circling Cats C/D visibility ¼ mile. Night Landing: Rwy 30 NA. Helicopter visibility reduction below ¼ SM NA.

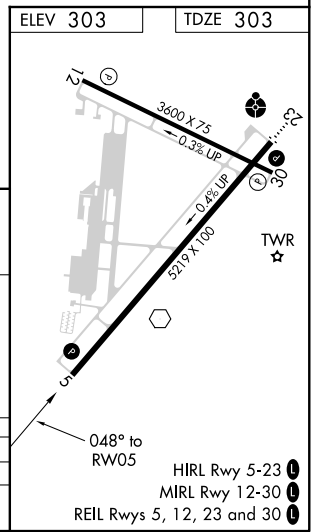
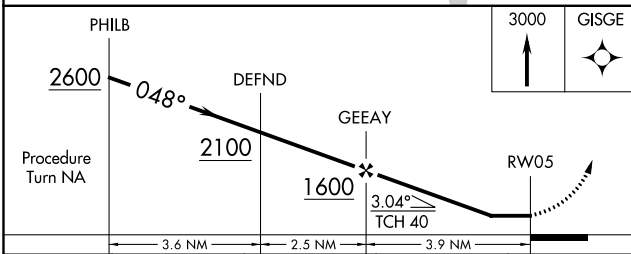
**MISSED APPROACH:**  
Climb to 3000 direct GISGE and hold.

ATIS <b>124.875</b>	POTOMAC APP CON <b>125.525 291.625</b>	FREDERICK TOWER ★ <b>132.4</b> (CTAF) <b>0</b>	GND CON <b>121.975</b>	CLNC DEL <b>121.975</b>	POTOMAC CLNC DEL <b>126.9</b> (when tower closed)	UNICOM <b>122.95</b>
------------------------	---	---	---------------------------	----------------------------	---	-------------------------



NE-3, 24 MAY 2018 to 21 JUN 2018

NE-3, 24 MAY 2018 to 21 JUN 2018



	PHILB		DEFND		GEEAY		RW05	
Procedure Turn NA	2600		2100		1600		3.04° TCH 40	
	3.6 NM		2.5 NM		3.9 NM			
CATEGORY	A		B		C		D	
LNAV MDA	720-1 417 (500-1)		720-1 ¼ 417 (500-1 ¼)		900-1 ½ 597 (600-1 ½)		1080-2 ½ 777 (800-2 ½)	
CIRCLING	900-1 597 (600-1)							

HIRL Rwy 5-23 **0**  
MIRL Rwy 12-30 **0**  
REIL Rws 5, 12, 23 and 30 **0**