

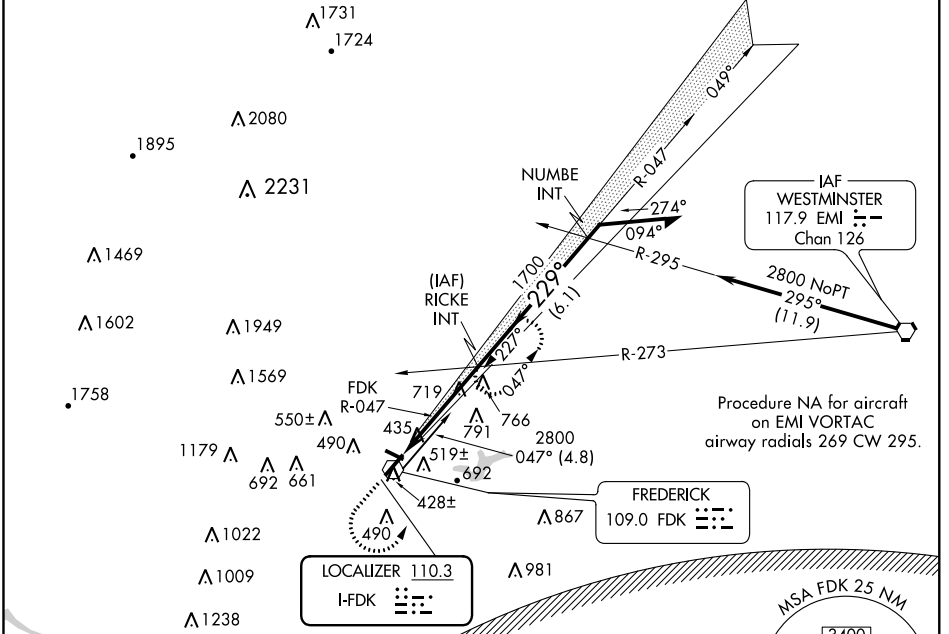
LOC I- FDK 110.3	APP CRS 229°	Rwy ldg TDZE Apt Elev	5219 296 303
-----------------------------------	------------------------	-----------------------------	---

ILS or LOC RWY 23

FREDERICK MUNI (F'DK)

▽ Inoperative table does not apply to S-LOC Cat C.	ODALS	MISSED APPROACH: Climb to 1300, then climbing left turn to 2800 via FDK R-047 to RICKE INT and hold.
△ NA Night Landing: Rwy 30 NA.		

ATIS 124.875	POTOMAC APP CON 125.525 291.625	FREDERICK TOWER ★ 132.4 (CTAF) 0	GND CON 121.975	CLNC DEL 121.975	POTOMAC CLNC DEL 126.9 (when tower closed)	UNICOM 122.95
------------------------	---	--	---------------------------	----------------------------	---	-------------------------

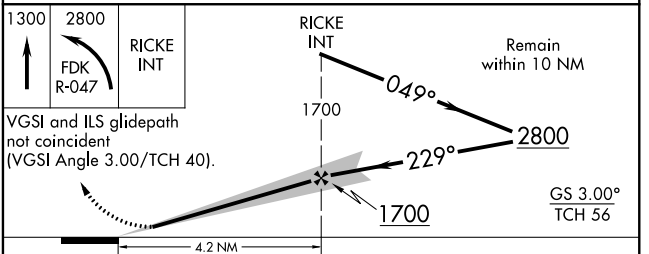


ELEV 303	TDZE 296
229° 4.2 NM from FAF	

REIL Rwy 5, 12, 23 and 30
HIRL Rwy 5-23
MIRL Rwy 12-30

FAF to MAP 4.2 NM

Knots	60	90	120	150	180
Min:Sec	4:12	2:48	2:06	1:41	1:24



CATEGORY	A	B	C	D
S-ILS 23		684-1½	388 (400-1½)	
S-LOC 23	1020-¾	724 (800-¾)	1020-2 724 (800-2)	1020-2¼ 724 (800-2¼)
CIRCLING	1020-1½	717 (800-1½)	1080-2¼ 777 (800-2¼)	1160-2¾ 857 (900-2¾)

NE-3, 07 DEC 2017 to 04 JAN 2018

NE-3, 07 DEC 2017 to 04 JAN 2018