

WAAS CH <b>86905</b> <b>W04A</b>	APP CRS <b>040°</b>	Rwy Idg <b>4775</b> TDZE <b>58</b> Apt Elev <b>72</b>
--	------------------------	---

# RNAV (GPS) RWY 4

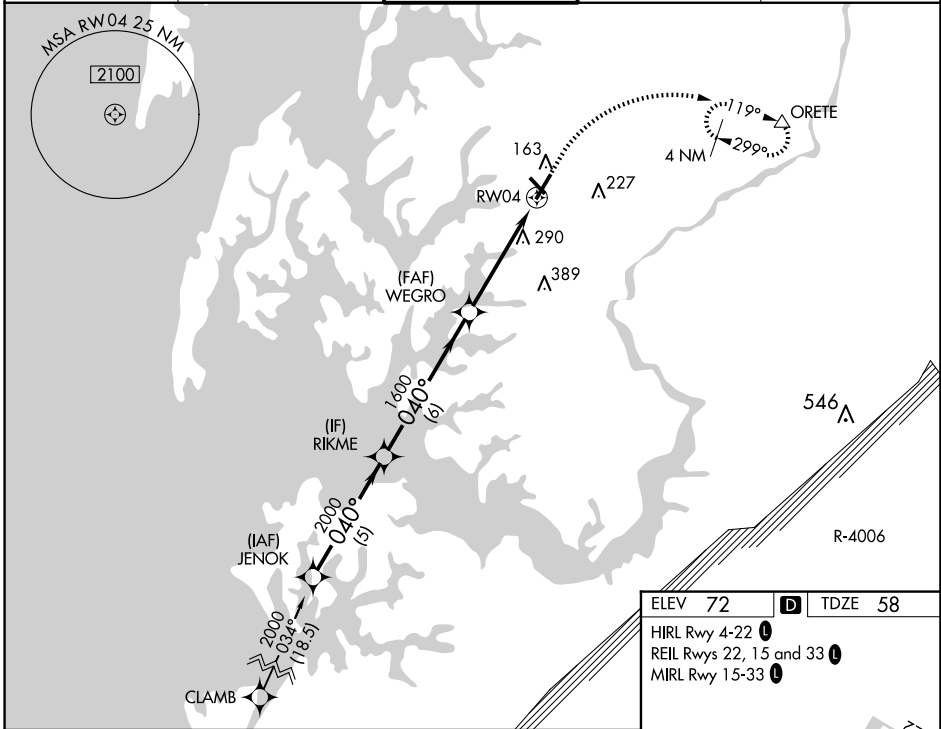
EASTON/NEWNAM FLD (ESN)

RNP APCH - GPS.

**⚠** When local altimeter setting not received, use Cambridge altimeter setting; increase LPV DA to 303 feet, LNAV/VNAV DA to 670 feet and visibility 1/8 SM; increase all MDA's 60 feet and visibility LNAV Cat C/D and Circling Cat C 1/8 SM, and Circling Cat D 1/4 SM. VDP and Baro-VNAV NA when using Cambridge altimeter setting. Circling Rwy 15, 33 NA at night. For uncompensated Baro-VNAV systems, LNAV/VNAV NA below -15°C or above 54°C.

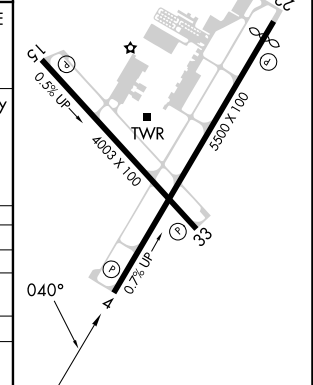
**⚠** MISSED APPROACH: Climb to 700 then climbing right turn to 2000 direct ORETE and hold.

ATIS <b>124.475</b>	POTOMAC APP CON <b>133.75 254.35</b>	EASTON TOWER ★ <b>118.525</b> (CTAF) <b>0</b>	GND CON <b>119.075</b>	CLNC DEL <b>119.075</b>
------------------------	---	--	---------------------------	----------------------------



ELEV 72	D	TDZE 58
HIRL Rwy 4-22 <b>0</b>		
REIL Rws 22, 15 and 33 <b>0</b>		
MIRL Rwy 15-33 <b>0</b>		

	JENOK	RIKME	WEGRO	700	2000	ORETE
	2000	2000	1600	↑	↷	△
	040°	040°	040°			
GP 3.00° TCH 44				*1.6 NM to RW04		*LNAV only
	5 NM	6 NM	3.1 NM	1.6 NM		
CATEGORY	A	B	C	D		
LPV DA		258-3/4	200 (200-3/4)			
LNAV/ VNAV DA		625-1 1/8	567 (600-1 1/8)			
LNAV MDA	600-1	542 (600-1)	600-1 1/8	542 (600-1 1/8)		
CIRCLING	600-1 528 (600-1)	640-1 568 (600-1)	640-1 1/8 568 (600-1 1/8)	740-2 668 (700-2)		



NE-3, 07 AUG 2025 to 04 SEP 2025

NE-3, 07 AUG 2025 to 04 SEP 2025