

WESTMINSTER, MARYLAND

AL-5533 (FAA)

23222

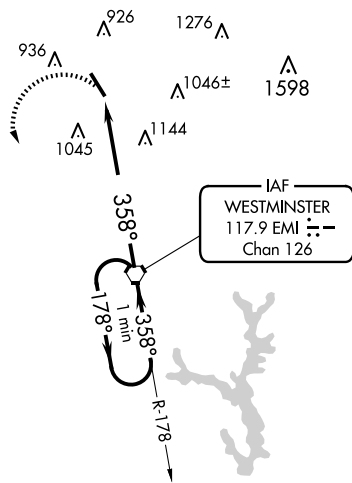
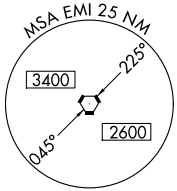
VORTAC EMI 117.9 Chan 126	APP CRS 358°	Rwy Idg TDZE Apt Elev	5100 788 789
---	------------------------	-----------------------------	---

VOR RWY 34

CARROLL COUNTY RGNL/JACK B POAGE FLD (DMW)

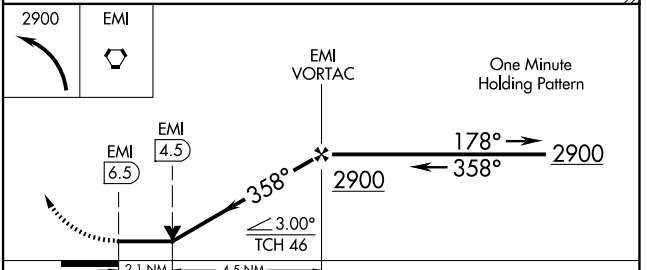
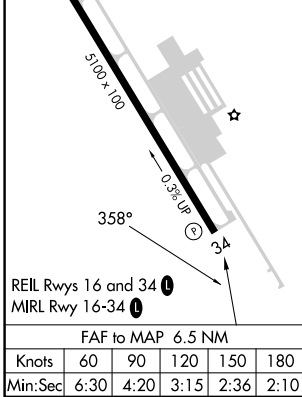
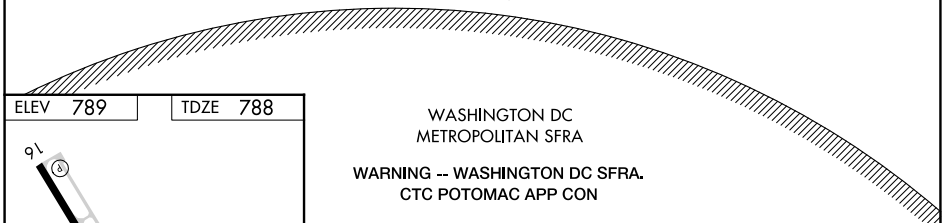
▼ ▲ NA	MISSED APPROACH: Climbing left turn to 2900 direct EMI VORTAC and hold.		
-----------	---	--	--

AWOS-3 121.25	POTOMAC APP CON 125.525 291.625	GCO 121.725	UNICOM 122.7 (CTAF) 0
-------------------------	---	-----------------------	---------------------------------



NE-3, 15 MAY 2025 to 12 JUN 2025

NE-3, 15 MAY 2025 to 12 JUN 2025



CATEGORY	A	B	C	D
S-34	1480-1	692 (700-1)	1480-2 692 (700-2)	NA
CIRCLING	1480-1	691 (700-1)	1500-2 711 (800-2)	NA

WESTMINSTER, MARYLAND
Amdt 4C 20MAY21

CARROLL COUNTY RGNL/JACK B POAGE FLD (DMW)
39°36'N-77°00'W

VOR RWY 34