

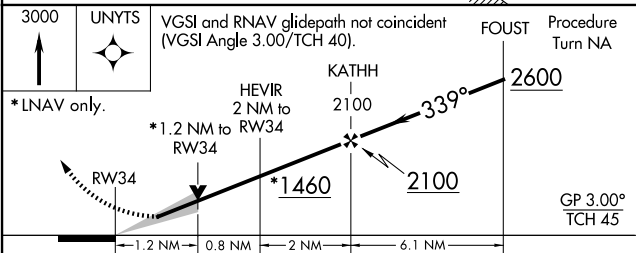
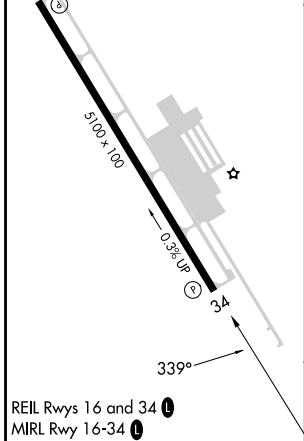
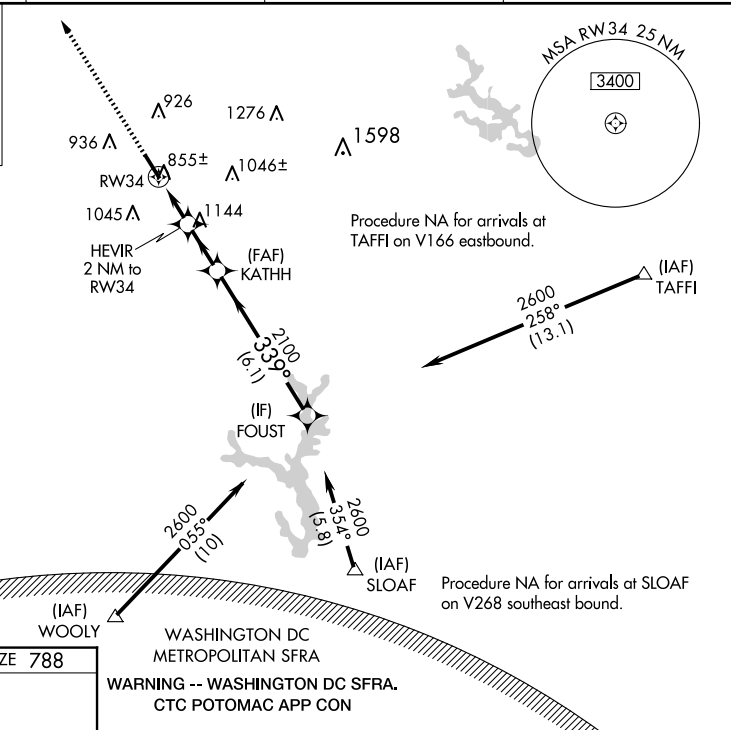
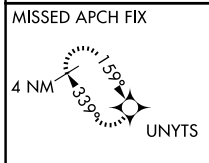
WAAS CH 82117 W34A	APP CRS 339°	Rwy Idg 5100 TDZE 788 Apt Elev 789
--	------------------------	---

RNAV (GPS) RWY 34

CARROLL COUNTY RGNL/JACK B POAGE FLD (DMW)

RNP APCH ▼ For uncompensated Baro-VNAV systems, LNAV/VNAV NA below -16°C (4°F) or above 54°C (130°F). ▲	MISSED APPROACH: Climb to 3000 direct UNYTS and hold
---	--

AWOS-3 121.25	POTOMAC APP CON 125.525 291.625	GCO 121.725	UNICOM 122.7 (CTAF) 0
-------------------------	---	-----------------------	---------------------------------



CATEGORY	A	B	C	D
LPV DA	988-1	200 (200-1)		NA
LNAV/VNAV DA	1105-1½	317 (400-1½)		NA
LNAV MDA	1180-1	392 (400-1)		NA
CIRCLING	1320-1 531 (600-1)	1400-1 611 (700-1)	1500-2 711 (800-2)	NA

NE-3, 15 MAY 2025 to 12 JUN 2025

NE-3, 15 MAY 2025 to 12 JUN 2025