

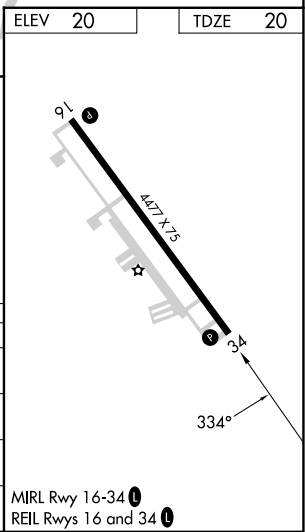
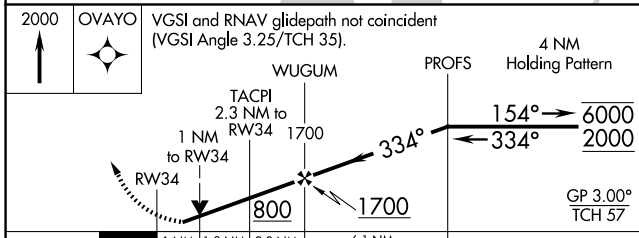
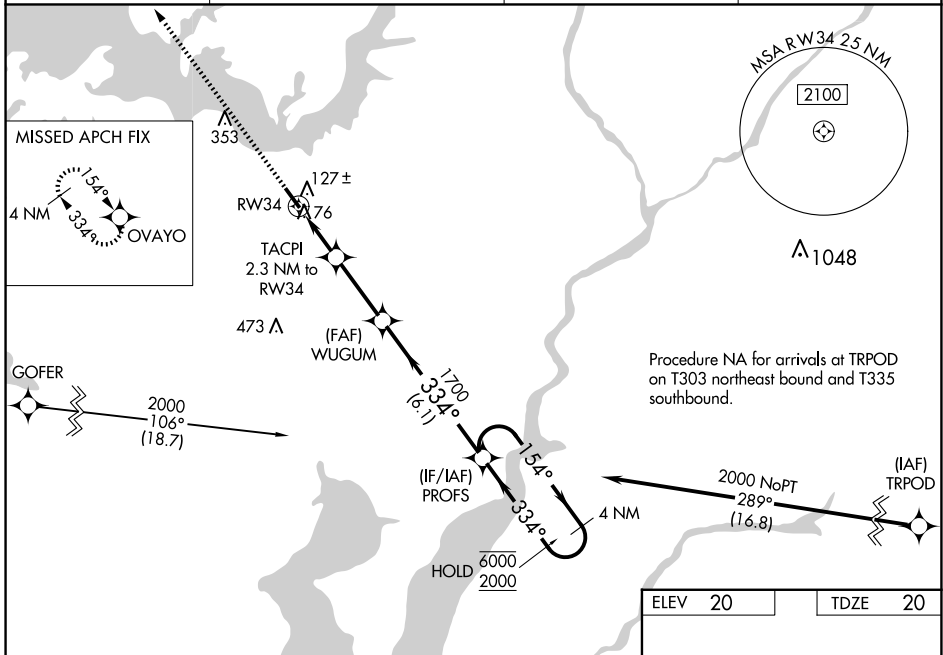
WAAS CH <b>45540</b> <b>W34A</b>	APP CRS <b>334°</b>	Rwy Idg TDZE Apt Elev	<b>4477</b> <b>20</b> <b>20</b>
--	------------------------	-----------------------------	---------------------------------------

# RNAV (GPS) RWY 34

CAMBRIDGE-DORCHESTER RGNL (CGE)

RNP APCH - GPS.		MISSED APPROACH: Climb to 2000 direct OVAYO and hold.
<p><b>⚠</b> Rwy 34 helicopter visibility reduction below 3/4 SM NA. For uncompensated Baro-VNAV systems, LNAV/VNAV NA below -1.5°C or above 54°C. Circling Rwy 16 NA at night.</p>		

AWOS-3 <b>120.675</b>	PATUXENT APP CON ★ <b>121.0 250.3</b>	UNICOM <b>122.7 (CTAF)</b>	<b>121.9</b> <b>⓪</b>
--------------------------	--	-------------------------------	-----------------------



CATEGORY	A	B	C	D
LPV DA		286-7/8	266 (300-7/8)	
LNAV/VNAV DA		380-1	360 (400-1)	
LNAV MDA		380-1	360 (400-1)	
<b>⓪</b> CIRCLING	440-1 420 (500-1)	480-1 460 (500-1)	660-1 3/4 640 (700-1 3/4)	780-2 1/2 760 (800-2 1/2)

MRL Rwy 16-34 **⓪**  
REL Rws 16 and 34 **⓪**

NE-3, 15 MAY 2025 to 12 JUN 2025

NE-3, 15 MAY 2025 to 12 JUN 2025