


APP CRS 155°	Rwy ldg TDZE Apt Elev	8301 138 143
------------------------	-----------------------------	---

RNAV (RNP) Z RWY 15R

BALTIMORE/WASHINGTON INTL THURGOOD MARSHALL (BWI)

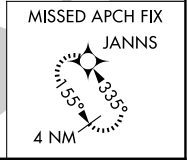
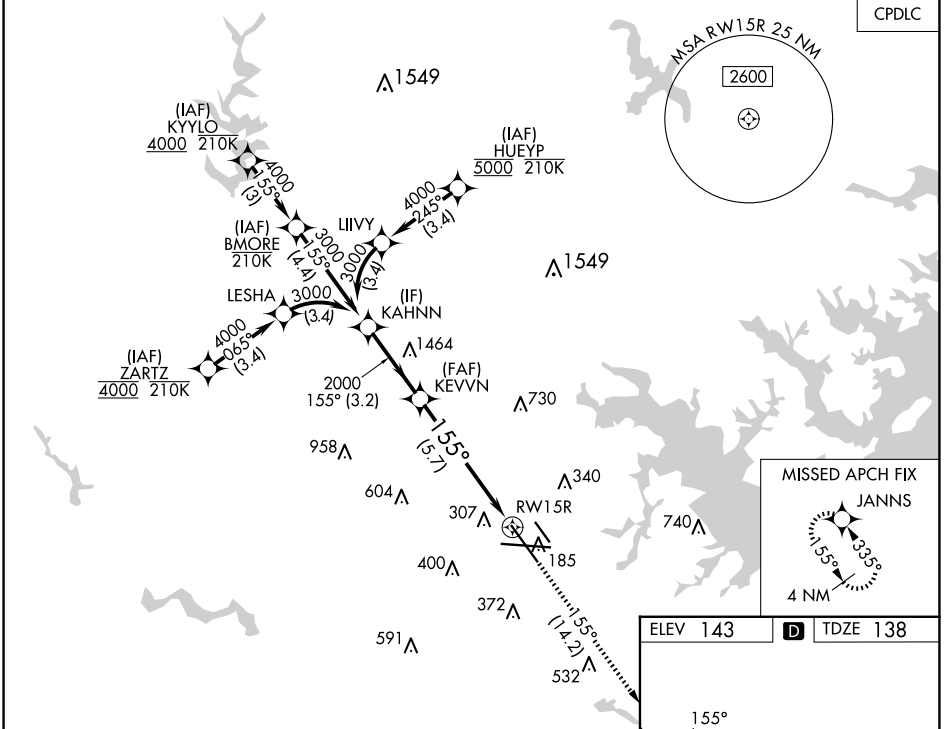
RNP AR APCH - GPS.

▼ For uncompensated Baro-VNAV systems, procedure NA below -11°C or above 54°C.
 Simultaneous approach authorized with Rwy 15L.
 For inop ALS, increase RNP 0.11 DA all Cats visibility to RVR 5500.

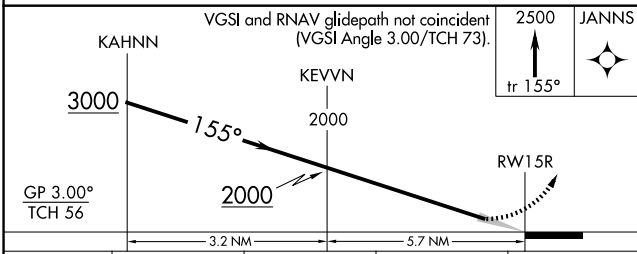
MALSR 

MISSED APPROACH: Climb to 2500 on track 155° to JANNSS and hold.

D-ATIS 115.1 127.8	POTOMAC APP CON 119.0 282.275 124.55 317.425	(020°-100°) 119.7 290.475 (101°-130°) 128.7 307.9	(131°-180°) 119.4 257.8	BALTIMORE TOWER	GND CON 121.9	CLNC DEL 118.05
------------------------------	--	--	-----------------------------------	-----------------	-------------------------	---------------------------

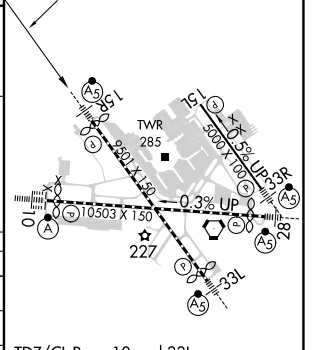


ELEV 143	D	TDZE 138
----------	----------	----------



CATEGORY	A	B	C	D
RNP 0.11 DA		513/35	375 (400-5%)	
RNP 0.30 DA		587/45	449 (500-7%)	

AUTHORIZATION REQUIRED



TDZ/CL Rwy 10 and 33L
 REIL Rwy 15L and 33R
 HIRL all Rwy's

NE-3, 15 MAY 2025 to 12 JUN 2025

NE-3, 15 MAY 2025 to 12 JUN 2025