

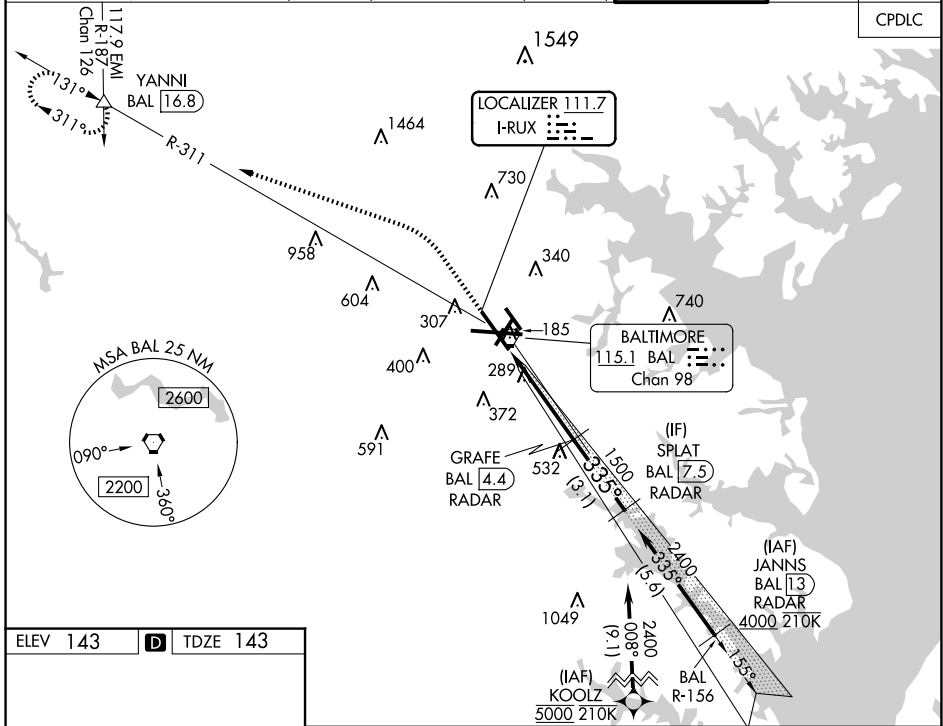
LOC I-RUX <b>111.7</b>	APP CRS <b>335°</b>	Rwy Ldg TDZE Apt Elev	<b>8301</b> <b>143</b> <b>143</b>
---------------------------	------------------------	-----------------------------	---

# ILS RWY 33L (SA CAT I & II)

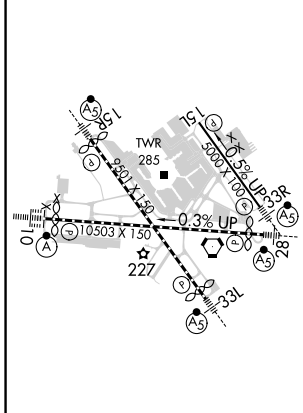
BALTIMORE/WASHINGTON INTL THURGOOD MARSHALL (BWI)

RNP APCH - GPS. From KOOLZ.  
 RADAR required for procedure entry. DME or RADAR required.  
 MALSR  
 MISSED APPROACH: Climb to 600 then climbing left turn to 2600 on heading 300° and BAL VORTAC R-311 to YANNI INT/ BAL 16.8 DME and hold.

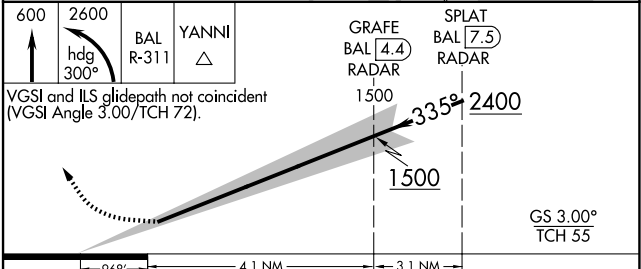
D-ATIS <b>115.1 127.8</b>	POTOMAC APP CON <b>119.0 282.275</b> (020°-100°) <b>119.7 290.475</b> (101°-130°)	<b>128.7 307.9</b> (181°-019°)	BALTIMORE TOWER <b>119.4 257.8</b>	GND CON <b>121.9</b>	CLNC DEL <b>118.05</b>
------------------------------	---	-----------------------------------	---------------------------------------	-------------------------	---------------------------



ELEV <b>143</b>	<b>D</b>	TDZE <b>143</b>
-----------------	----------	-----------------



TDZ/CL Rwy 10 and 33L  
 REIL Rwy 15L and 33R  
 HIRL all Rwy



CATEGORY	A	B	C	D
S-ILS 33L	SA CAT I RA 185/14 150 DA 293			
S-ILS 33L	SA CAT II RA 128/12 100 DA 243			

**SA CATEGORY I & II ILS - SPECIAL AIRCREW & AIRCRAFT CERTIFICATION REQUIRED**

NE-3, 15 MAY 2025 to 12 JUN 2025

NE-3, 15 MAY 2025 to 12 JUN 2025