

LOC I-BAL 109.7	APP CRS 105°	Rwy ldg 9953 TDZE 143 Apt Elev 143
---------------------------	------------------------	---------------------------------------------------------------

BALTIMORE/
WASHINGTON INTL THURGOOD MARSHALL (BWI) **ILS RWY 10 (SA CAT I)**

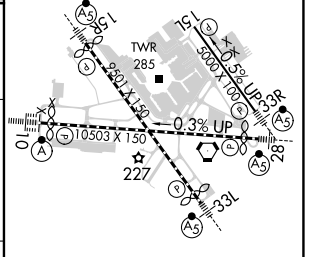
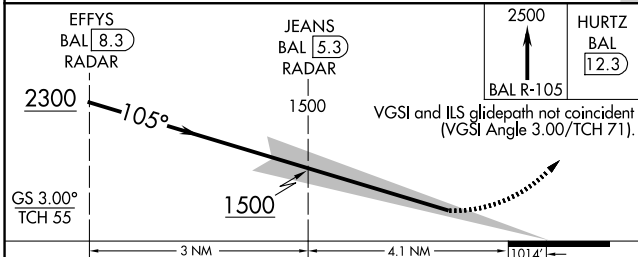
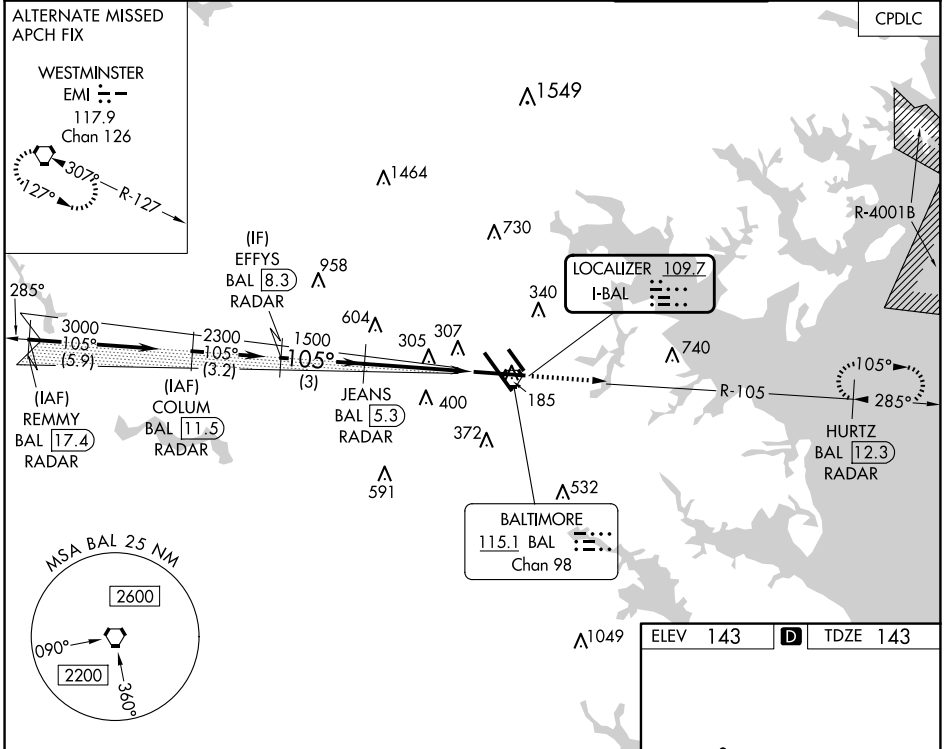
RADAR required for procedure entry.
DME or RADAR required.

Requires specific OPSPEC, MSPEC,
or LOA approval and use of HUD to DH.

ALSf-2

MISSED APPROACH: Climb to 2500 on BAL VORTAC
R-105 to HURTZ/BAL 12.3 DME/RADAR and hold.

D-ATIS 115.1 127.8	POTOMAC APP CON 119.0 282.275 (020°-100°) 124.55 317.425 (101°-130°)	119.7 290.475 (131°-180°) 128.7 307.9 (181°-019°)	BALTIMORE TOWER 119.4 257.8	GND CON 121.9	CLNC DEL 118.05
------------------------------	------------------------------------------------------------------------------------------	--------------------------------------------------------------------	---------------------------------------	-------------------------	---------------------------



CATEGORY	A	B	C	D
S-ILS 10		RA 188/14	150 DA 293	

SA CATEGORY I ILS - SPECIAL AIRCREW & AIRCRAFT CERTIFICATION REQUIRED

TDZ/CL Rws 10 and 33L
REIL Rws 15L and 33R
HIRL all Rws

NE-3, 15 MAY 2025 to 12 JUN 2025

NE-3, 15 MAY 2025 to 12 JUN 2025