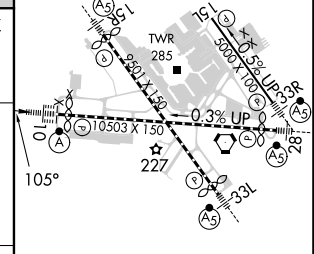
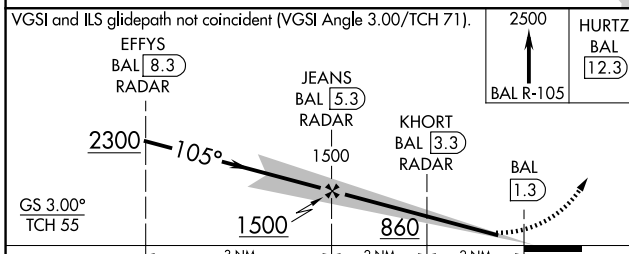
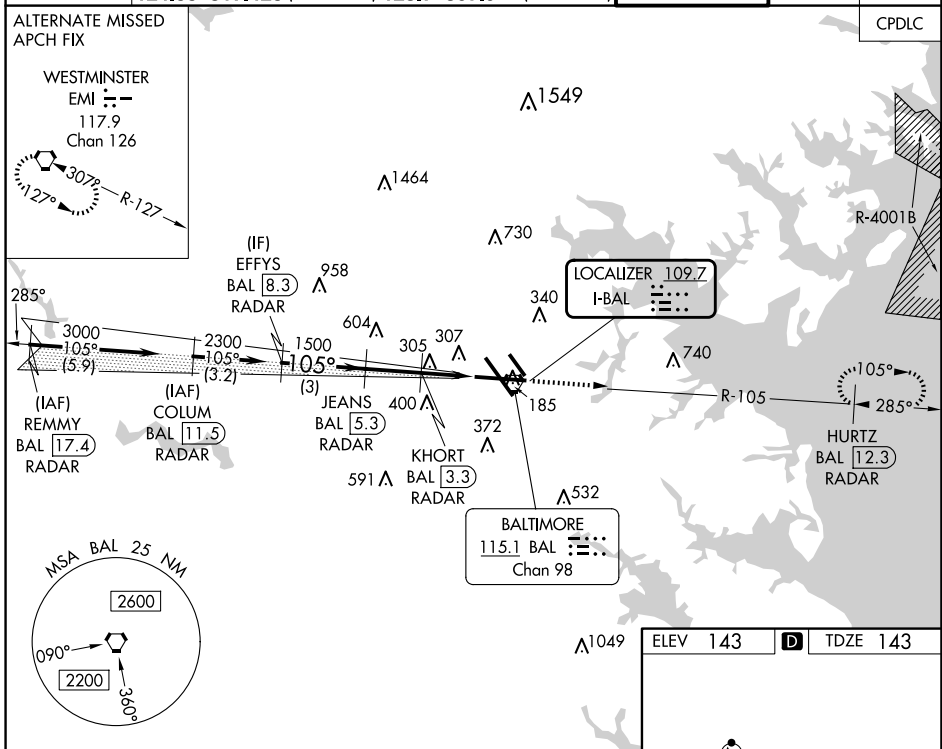


LOC I-BAL 109.7	APP CRS 105°	Rwy Idg 9953 TDZE 143 Apt Elev 143
---------------------------	------------------------	---------------------------------------------------------------

BALTIMORE/
WASHINGTON INTL THURGOOD MARSHALL (BWI)
ILS or LOC RWY 10

RADAR required for procedure entry. DME or RADAR required.		ALSIF-2 	MISSED APPROACH: Climb to 2500 on BAL VORTAC R-105 to HURTZ/BAL 12.3 DME/RADAR and hold.	
D-ATIS 115.1 127.8	POTOMAC APP CON 119.0 282.275 (020°-100°) 119.7 290.475 (131°-180°) 124.55 317.425 (101°-130°) 128.7 307.9 (181°-019°)		BALTIMORE TOWER	GND CON 121.9
			CLNC DEL 118.05	CPDLC



	ELEV 143		D TDZE 143			
CATEGORY	A	B	C	D		
S-ILS 10	343/18		200 (200-½)			
S-LOC 10	580/24 437 (500-½)		580/40 437 (500-¾)			
CIRCLING	640-1 497 (500-1)	660-1 517 (600-1)	700-1½ 557 (600-1½)	880-2¼ 737 (800-2¼)		
FDZ/CL Rwy 10 and 33L REIL Rwy 15L and 33R HIRL all Rwy						
FAF to MAP 4.1 NM						
Knots		60	90	120	150	180
Min:Sec		4:06	2:44	2:03	1:38	1:22

ILS or LOC RWY 10

NE-3, 15 MAY 2025 to 12 JUN 2025

NE-3, 15 MAY 2025 to 12 JUN 2025