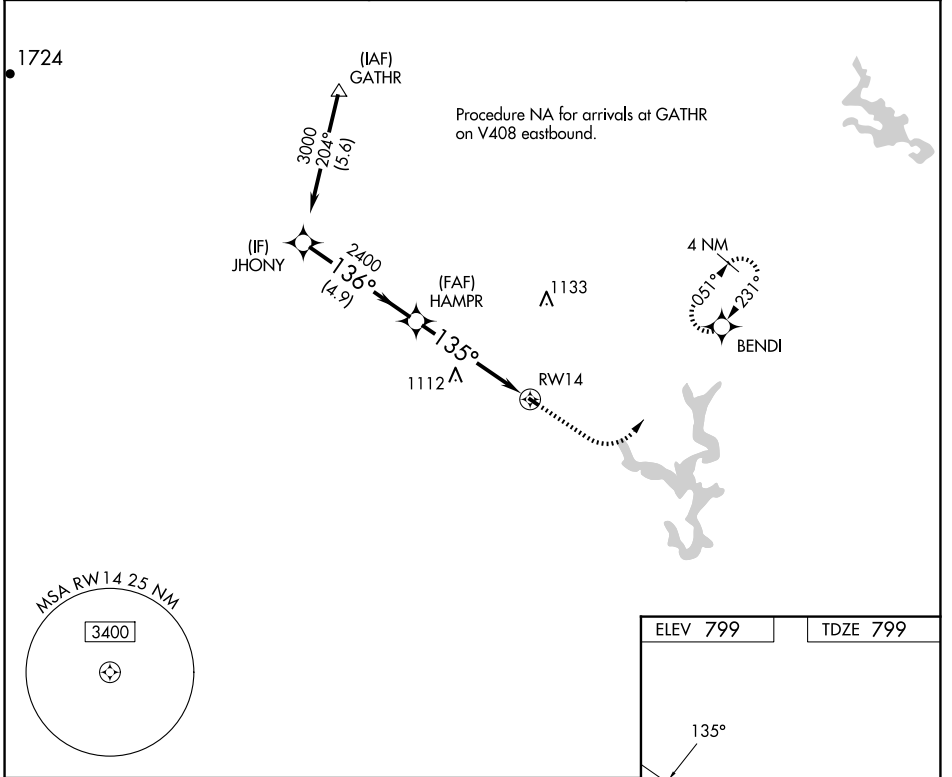


APP CRS <b>135°</b>	Rwy Idg <b>1840</b>
	TDZE <b>799</b>
	Apt Elev <b>799</b>

# RNAV (GPS) RWY 14

CLEARVIEW AIRPARK (2W2)

RNP APCH.		MISSED APPROACH: Climb to 1500 then climbing left turn to 3000 direct BENDI and hold.
<p><b>▼</b> Procedure NA at night. Rwy 14 helicopter visibility reduction below 1 SM</p> <p><b>▲</b> NA. Use Carroll County Rgnl/Jack B. Poage Fld altimeter setting, when not received, use Gaithersburg altimeter setting and increase all MDA 60 feet.</p>		
DMW AWOS-3 <b>121.25</b>	POTOMAC APP CON <b>125.525 291.625</b>	UNICOM <b>122.8 (CTAF) 0</b>



NE-3, 15 MAY 2025 to 12 JUN 2025

NE-3, 15 MAY 2025 to 12 JUN 2025

JHONY	Visual Segment - Obstacles.			1500	3000	BENDI
3000	136°	HAMPR	2400	135°	RWY14	
4.9 NM		5 NM				
CATEGORY	A	B	C	D		
LNAV MDA	1360-1 561 (600-1)		NA			
<b>C</b> CIRCLING	1360-1 561 (600-1)		NA			

